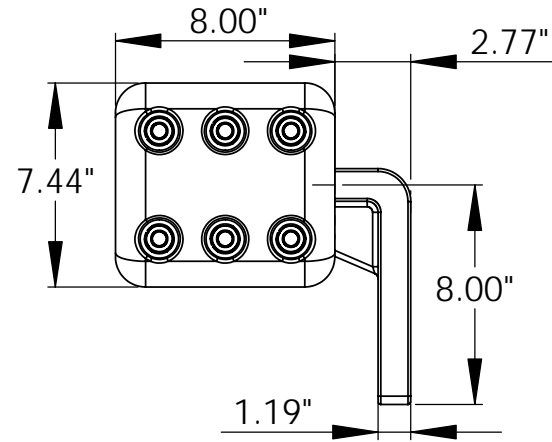
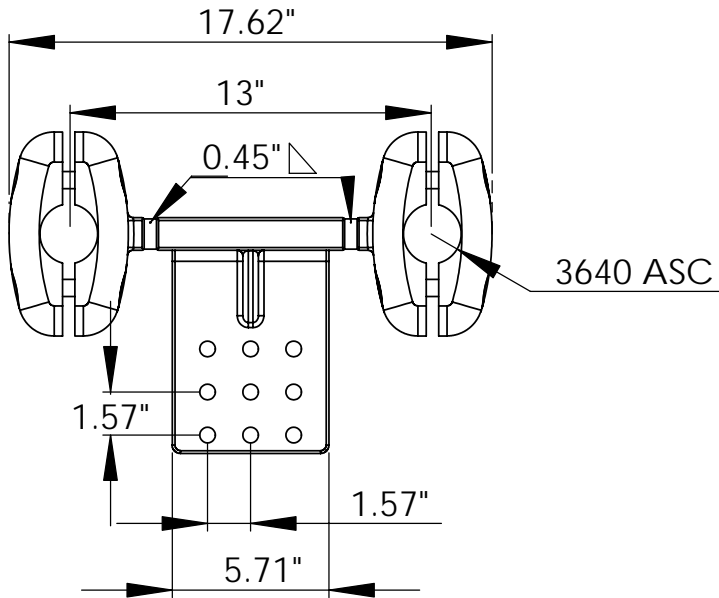
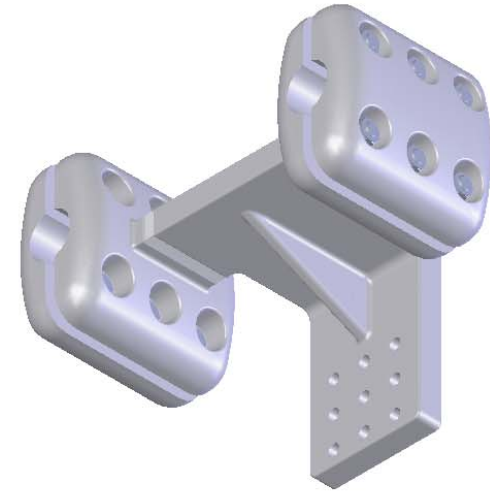
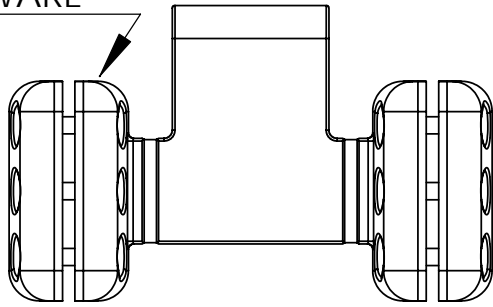


5/8 ϕ STAINLESS
HARDWARE



ITEM NO.	PART NUMBER	QTY.
1	3640 kcml ehv I bracket'	1
2	3640 KCML EHV BODY	2
3	3640 KCML EHV CAP	2
4	5/8 x 2 1/2 SSHW	12
5	5/8 SS LW	12
6	5/8 SIL BRZ NUT	12

Part Number:
11-262-90-(13)-EHV-9HP(3640ASC)

DESCRIPTION: Two 3640 kcml parallel cables 13" spacing to a 90 degree 9 hole flat pad. (550kv)

UNLESS OTHERWISE SPECIFIED:	DRAWN	NAME	DATE
DIMENSIONS ARE IN INCHES	CHECKED	TM	3/13/2007
TOLERANCES: $\pm 1/16"$	SCALE:	WEIGHT:	
ANGULAR: ± 5 DEG			
MATERIAL: 356			



PROPRIETARY AND CONFIDENTIAL

THE INFORMATION CONTAINED IN THIS DRAWING IS THE SOLE PROPERTY OF TRAVIS PATTERN & FOUNDRY. ANY REPRODUCTION IN PART OR AS A WHOLE WITHOUT THE WRITTEN PERMISSION OF TRAVIS PATTERN & FOUNDRY IS PROHIBITED.