

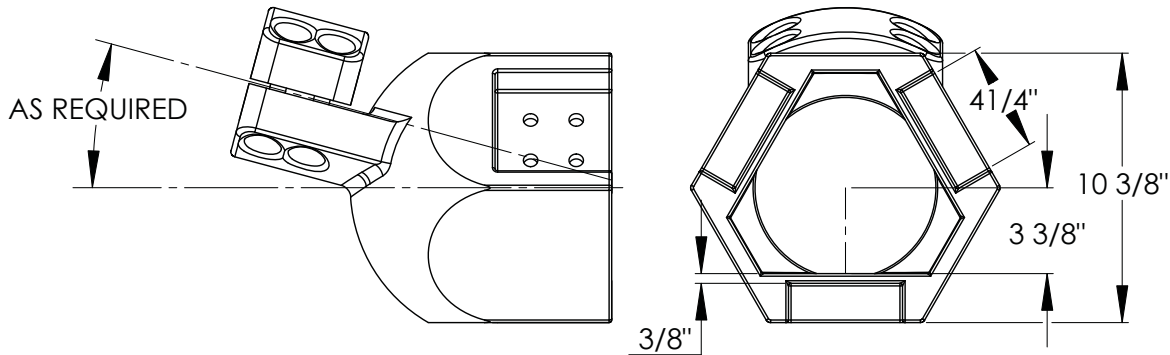
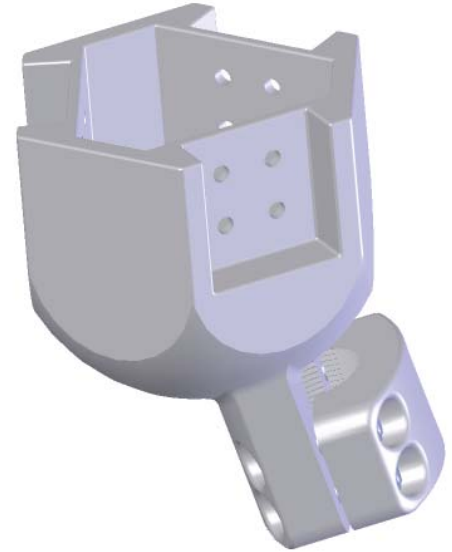
The stud to pad trifurcating connectors are cast of a high strength aluminum alloy and are capable of providing a corona free environment through 500KV. Mounting hardware must be ordered separately.

When placing an order, please indicate the desired angle of the stud with the appropriate descriptor.

Example: TAS(9)-(1 1/2-12)-**15**-EHV.

If a connector that has the stud in line with the pads is preferred, simply leave out any descriptor.

Example: TAS(9)-(1 1/2-12)-EHV.



* Specify desired angle.

| TRIFURCATING TEE CONNECTORS STUD TO FLAT PADS | |
|---|----------|
| CATALOG NUMBER | PIPE IPS |
| TAS(9)-(1 1/8-12)-*-EHV | 1 1/8-12 |
| TAS(9)-(1 1/2-12)-*-EHV | 1 1/2-12 |
| TAS(9)-(2-12)-*-EHV | 2-12 |
| TAS(9)-(3-12)-*-EHV | 3-12 |