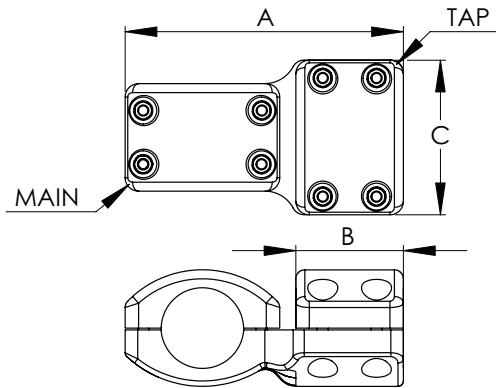
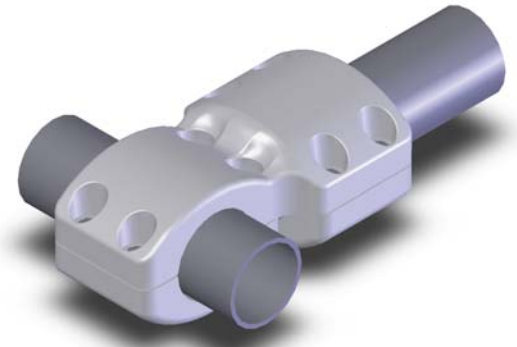


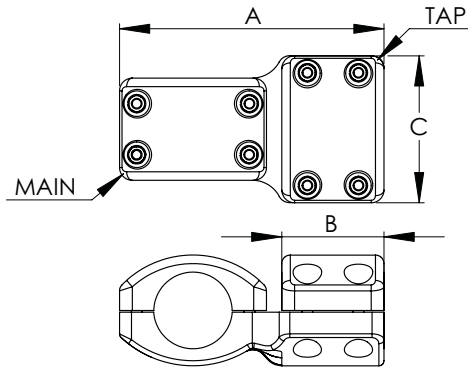
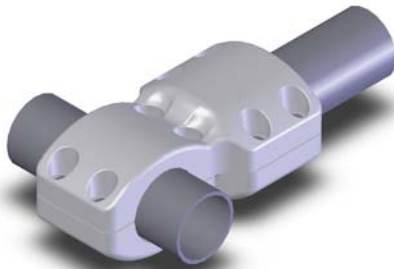
Where circumstances require a pipe tee connector of lightweight aluminum alloy, the Type EHV APTP meets the most strenuous electrical and mechanical demands. All of the EHV APTP connectors have been designed to provide a corona free environment at 500KV, but can most certainly be used for lower voltage applications. All clamping hardware is recessed and made of high tensile aluminum.



BOLTED EHV TEE TERMINAL PIPE TO PIPE					
CATALOG NUMBER	IPS MAIN	IPS TAP	DIMENSIONS IN INCHES		
			A	B	C
12-212-EHV	2	2	10 1/8	4	5 3/8
12-218-EHV	2 1/2	2	11 7/8	4	5 3/8
12-219-EHV	2 1/2	2 1/2	12 1/4	4 3/8	7 1/8
12-225-EHV	3	2	12	4	5 3/8
12-226-EHV	3	2 1/2	12 3/8	4 3/8	7 1/8
12-227-EHV	3	3	13	5	7 1/4
12-233-EHV	3 1/2	2	12 3/4	4	5 3/8
12-234-EHV	3 1/2	2 1/2	13 1/8	4 3/8	7 1/8
12-235-EHV	3 1/2	3	13 3/4	5	7 1/4
12-236-EHV	3 1/2	3 1/2	14 1/8	5 3/8	8

Continued on next page.

12-1E



Continued from previous page.

BOLTED EHV TEE TERMINAL PIPE TO PIPE					
CATALOG NUMBER	IPS		DIMENSIONS IN INCHES		
	MAIN	TAP	A	B	C
12-242-EHV	4	2	13 3/8	4	5 3/8
12-243-EHV	4	2 1/2	13 1/8	4 3/8	7 1/8
12-244-EHV	4	3	13 3/4	5	7 1/4
12-245-EHV	4	3 1/2	14 3/4	5 3/8	8
12-246-EHV	4	4	15 3/8	6	8 5/8
12-263-EHV	5	2	14 1/4	4	5 3/8
12-264-EHV	5	2 1/2	14 5/8	4 3/8	7 1/8
12-265-EHV	5	3	15 1/4	5	7 1/4
12-266-EHV	5	3 1/2	15 5/8	5 3/8	8
12-267-EHV	5	4	16 1/4	6	8 5/8
12-269-EHV	5	5	16 7/8	6 5/8	9 1/2
12-275-EHV	6	2	16 1/8	4	5 3/8
12-276-EHV	6	2 1/2	16 1/2	4 3/8	7 1/8
12-277-EHV	6	3	17 1/8	5	7 1/4
12-278-EHV	6	3 1/2	17 1/2	5 3/8	8
12-279-EHV	6	4	18 1/8	6	8 5/8
12-281-EHV	6	5	18 3/4	6 5/8	9 1/2
12-282-EHV	6	6	19 1/4	7 1/8	11 3/8

12-1E(Continued)