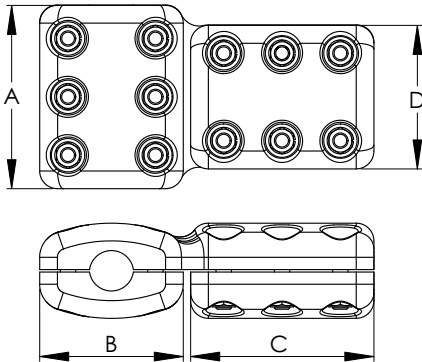
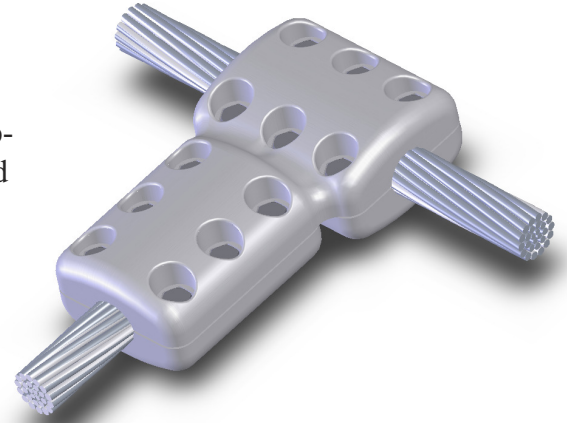


Connecting a cable tap to the cable main can be accomplished with efficiency and economy when the Type EHV ATTC is employed. Cast of a lightweight aluminum alloy, it includes bolts, nuts, and lockwashers made of high tensile aluminum for clamping strength and resistance to wear. These connectors are designed for corona free performance at voltage levels up to 500KV. To facilitate single-wrench installation, all bolt heads are captivated.



For conductors 2000AAC/1590ACSR and up, a six bolt configuration will be used. For conductors below 2000AAC/1590ACSR, a four bolt configuration will be used.

Note: When placing an order, specific conductor size must be provided. For example a terminal for a 1431 AAC to 1272 AAC conductor should appear as “12-923-EHV(1431AAC-1272AAC)” while a terminal for a 1590 ACSR to 1590 ACSR conductor would appear as “12-929-EHV(1590ACSR-1590ACSR)”

\*Specify specific conductor size.

BOLTED EHV TEE TERMINAL CABLE TO CABLE						
CATALOG NUMBER	CABLE		DIMENSIONS IN INCHES			
	MAIN	TAP	A	B	C	D
12-917-EHV*	900-1250 AAC 715.5-1113 ACSR	900-1250 AAC 715.5-1113 ACSR	5 1/8	5 1/8	5 1/8	5 1/8
12-922-EHV*	1250-1590 AAC 1113-1272 ACSR	900-1250 AAC 715.5-1113 ACSR	5 1/8	5 1/8	5 1/8	5 1/8
12-923-EHV*	1250-1590 AAC 1113-1272 ACSR	1250-1590 AAC 1113-1272 ACSR	5 1/8	5 1/8	5 1/8	5 1/8
12-927-EHV*	1590-2500 AAC 1272-1590 ACSR	900-1250 AAC 715.5-1113 ACSR	7 3/8	5 7/8	5 1/8	5 1/8
12-928-EHV*	1590-2500 AAC 1272-1590 ACSR	1250-1590 AAC 1113-1272 ACSR	7 3/8	5 7/8	5 1/8	5 1/8
12-929-EHV*	1590-3000 AAC 1272-1590 ACSR	1590-3000 AAC 1272-1590 ACSR	7 3/8	5 7/8	7 3/8	5 7/8

Dimensions are approximate as they will vary with conductor sizes.

**12-6E**