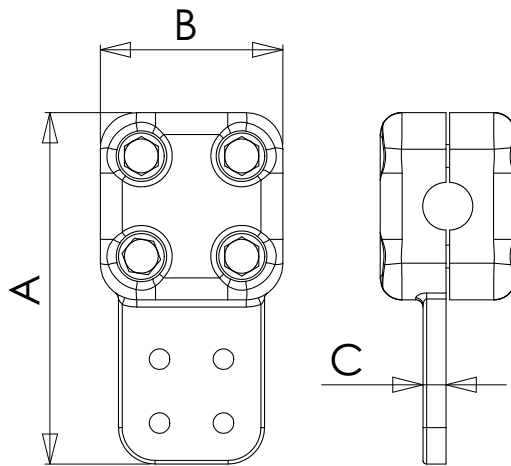
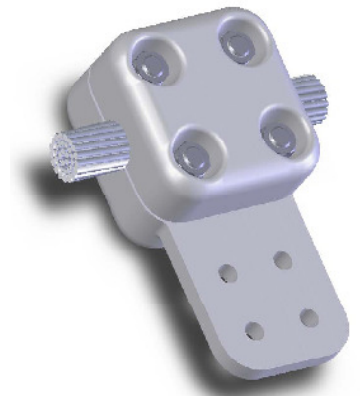


Cast of a lightweight aluminum alloy, the Type EHV ATCB terminals provide a corona free environment at 345 KV and 500 KV. All hardware is completely recessed and bolt heads are captivated to facilitate single-wrench installation. Bolt shields, which must be used to assure corona free performance, are available but must be ordered separately. Contact sealant is recommended.



For conductors 2000AAC/1590ACSR and up, a six bolt configuration will be used



*Specify specific conductor size.

BOLTED EHV TERMINAL CABLE TO FLAT PAD						
CATALOG NUMBER	DIMENSIONS IN INCHES			A	B	c
	AAC	ACSR	DIA.			
12-1103-345-*	874.5-1033.5	715.5-795	1.072-1.172	8 1/4	4	3/4
12-1109-EHV-*	1033.5-1272	795-1113	1.172-1.282	8 1/2	4 1/4	3/4
12-1112-EHV-*	1272-1590	1113-1431	1.282-1.445	8 3/4	4 1/2	3/4
12-1115-EHV-*	1590-2500	1431-2167	1.445-1.824	9 3/4	5	7/8

Dimensions are approximate as they will vary with conductor sizes.

12-8E