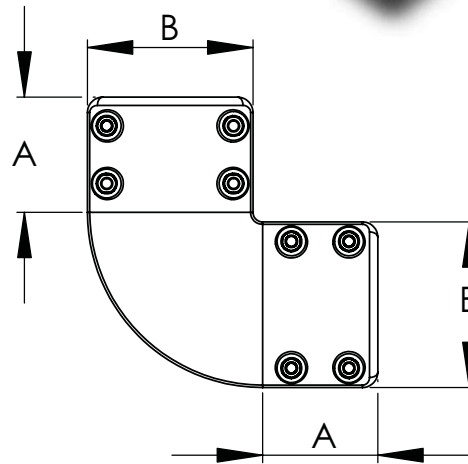
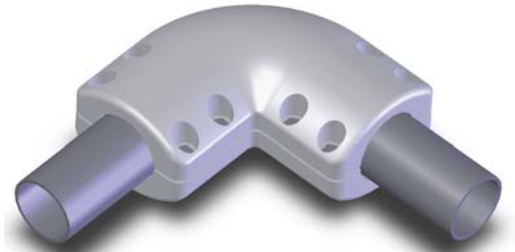


Made of a lightweight aluminum alloy, the Type EHV AEPP offers strength and durability in situations requiring the connection of tubes of the same size at an angle. The high tensile aluminum clamping hardware effectively resists corrosion and enhances the strength of the connector. In addition, all bolt heads are captivated to permit single-wrench installation. Corona free at 345KV.

Orders for varying angles can be filled by adding a suffix to the catalog number. If, for instance, 45° angle were required for catalog number 13-417-345KV, the number should be written on the order as 13-417-45-345KV.



BOLTED EHV ELBOW TERMINAL PIPE TO PIPE			
CATALOG NUMBER	PIPE MAIN	DIMENSIONS IN INCHES	
		A	B
13-417-345KV	2	4	5 3/8
13-423-345KV	2 1/2	4 3/8	7 1/8
13-429-345KV	3	5	7 1/4
13-435-345KV	3 1/2	5 3/8	8
13-441-345KV	4	6	8 5/8
13-455-345KV	5	6 5/8	9 1/2
13-462-345KV	6	7 1/8	11 3/8