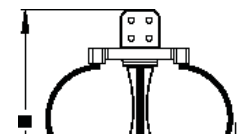
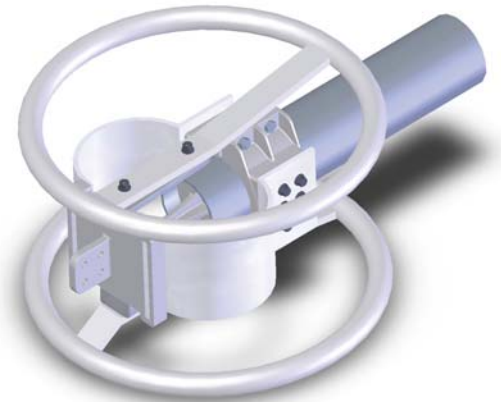
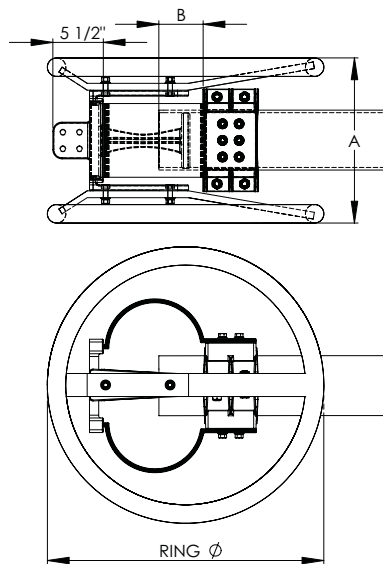


When it is necessary to connect a pipe to a flat bar bus and compensate for temperature variations, the Type EHV AETP is a dependable connector. Made of a lightweight aluminum alloy, it effectively protects equipment bushings, switch gear, and insulators from expanding or contracting bar pressures while providing a corona free environment up to 500KV. The flexible shunts of laminated soft aluminum are designed to carry the maximum current of the bus it connects. Bolts, nuts, and lockwashers of high tensile aluminum insure clamping strength and resistance to wear.



For Pad Rotated 90 Degrees
Use Suffix (V)
Example 15-296V-EHV

BOLTED EHV EXPANSION TERMINAL, PIPE TO FLAT PAD					
CATALOG NUMBER	PIPE IPS	DIMENSIONS IN INCHES			
		A	B	PAD THICKNESS	RING DIA.
15-284-345KV	1 1/2	12 1/4	6 1/2	3/4	24
15-287-345KV	2	12 1/4	6 3/4	3/4	24
15-290-345KV	2 1/2	12 1/4	6 1/4	3/4	24
15-293-EHV	3	12 1/4	6 3/4	3/4	24
15-296-EHV	3 1/2	13 1/4	7	1	24
15-299-EHV	4	15	7 1/4	1	24
15-305-EHV	5	17	7 3/4	1 1/4	24
15-308-EHV	6	18	8	1 1/2	30