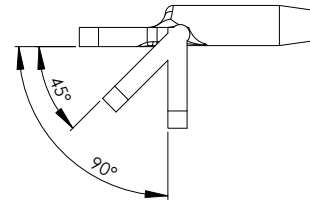
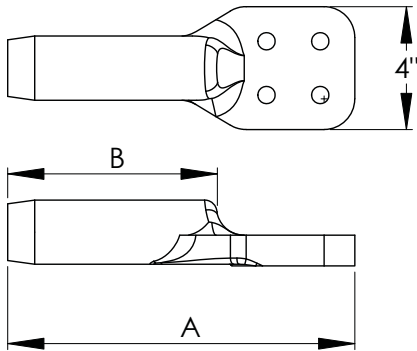




For tighter areas when a shorter barrel is required the type EHV ACTS are the perfect choice. These connectors are capable of providing corona free performances at 345KV and 500KV. Single cable connectors with a minimum diameter of 1.76" are corona free up to 345KV. To achieve corona free performance at 500KV two or more cables must be bundled. Hardware shields and mounting hardware are available but must be purchased separately.



For pads other than parallel to the cable bus add the degree variation from parallel to the catalog No. (Example: for pad 45 deg. from parallel to cable run specify catalog 16-161D-S-45-345KV).

EHV COMPRESSION TERMINAL CABLE TO FLAT PAD							
CATALOG NUMBER	CABLE SIZE		CONDUCTOR DIA.	DIMENSIONS IN		DIE REF.	PAD THICKNESS
	AAC	ACSR		A	B		
16-152D-S-345KV	700-817.5	605-715.5	.964-1.081	9 1/8	4 5/8	1.843	11/16
16-161D-S-345KV	900-1000	795-874.5	1.082-1.152	9 1/4	4 3/4	1.843	5/8
16-164D-S-345KV	1033.5-1113	900-954	1.153-1.216	9 1/2	5	2.125	3/4
16-165D-S-345KV	1200-1272	1033.5-1113	1.217-1.300	9 7/8	5 1/8	2.375	3/4
16-167D-S-345KV	1400-1510.5	1272-1351.5	1.301-1.424	12	7 1/4	2.375	3/4
16-168D-S-345KV	1590-1700	1351.5-1510.5	1.425-1.506	12	7 1/4	2.375	3/4
16-169D-S-345KV	1750	1570.5-1590	1.507-1.545	12	7 1/4	2.375	3/4
16-170D-S-345KV	2000	1780	1.546-1.659	12 1/2	7 3/4	2.937	1
16-171D-S-EHV	-	2156	1.660-1.762	12 1/2	7 3/4	2.937	1
16-172D-S-EHV	2500	-	1.763-1.824	12 1/2	7 3/4	2.937	1
16-173D-S-EHV	3000	-	1.825-1.996	12 1/2	7 3/4	2.937	1
16-174D-S-EHV	3500	-	1.997-2.160	12 1/2	7 3/4	2.937	1