

These aluminum compression tee connectors are designed to provide a corona free environment at 345KV and 500KV. Compression terminals for connecting an aluminum cable main to an aluminum cable tap have the crimping die sizes clearly marked for ease of installation.



To establish an item number define the run and tap by the corresponding numbers above and add a suffix "R" for the run and "T" for the tap. For example, to define a connector consisting of a 1590 ACSR run and a 795 ACSR tap the part number should be created as follows;

Find the corresponding values

169 = 1590 ACSR

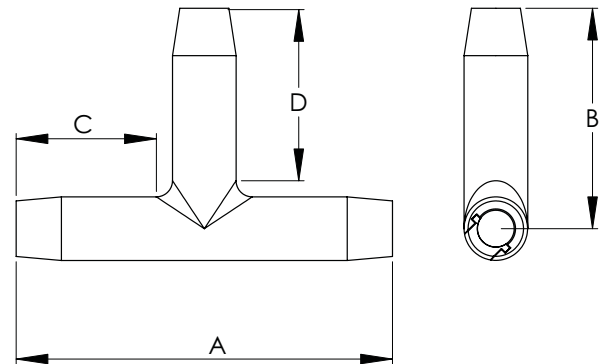
161 = 795 ACSR

Fill in the blanks

16-__R-__T-EHV

And you have a part number

16-169R-161T-EHV



BOLTED EHV COMPRESSION TEE TERMINAL CABLE TO CABLE								
CATALOG NUMBER	CABLE SIZE		CONDUCTOR DIA.	DIMENSIONS IN INCHES				DIE REF.
	AAC	ACSR		A	B	C	D	
152	700-795	605-636	.964-1.028	12	6 1/4	5 1/8	5 3/8	1.843
158	800-817.5	715.5	1.031-1.081	12	6 1/4	5 1/8	5 3/8	1.843
161	900-1000	795-874.5	1.092-1.152	12	6 1/4	5 1/8	5 3/8	1.843
164	1033.5-1113	900-954	1.162-1.216	14	8 1/8	5 3/4	6 7/8	2.125
165	1200-1272	1033.5-1113	1.246-1.300	14	8 1/8	5 3/4	6 7/8	2.375
167	1400-1510.5	1272-1351.5	1.345-1.424	14	8 1/8	5 3/4	6 7/8	2.375
168	1590-1700	1351.5-1510.5	1.424-1.506	14	8 1/8	5 3/4	6 7/8	2.375
169	1750	1570.5-1590	1.506-1.545	14	8 1/8	5 3/4	6 7/8	2.375
170	2000	1780	1.602-1.659	16	10 3/4	6 3/4	6 3/4	2.937
171	-	2156	1.750-1.762	16	10 3/4	6 3/4	6 3/4	2.937
172	2500	-	1.824	16	10 3/4	6 3/4	6 3/4	2.937
173	3000	-	1.996	18	12 1/4	7 7/8	8 3/4	2.937
174	3500	-	2.16	18	12 1/4	7 7/8	8 3/4	2.937