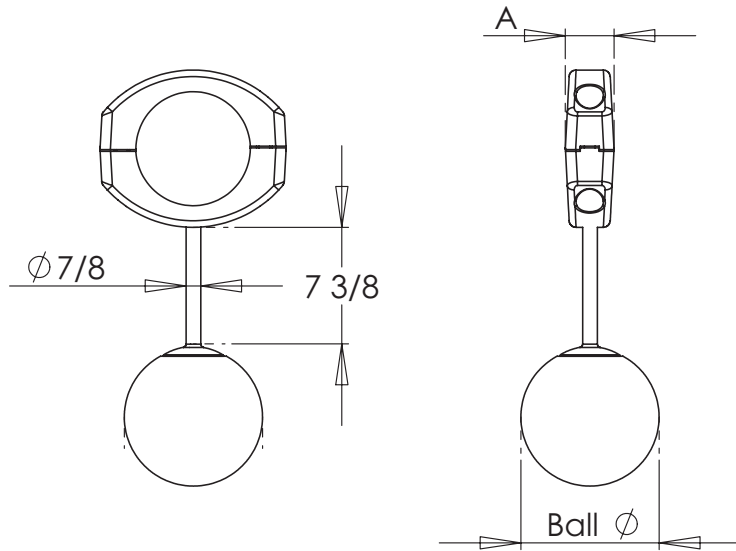


Manufactured of a strong, lightweight aluminum alloy, the Type EHV APGS joins an aluminum pipe to a grounding stud. Designed with recessed hardware, these connectors provide corona free performance up to 500KV. For clamping strength and resistance to corrosion, bolts, nuts, and lockwashers are high tensile aluminum. To facilitate installation, all bolt heads are recessed.



| BOLTED EHV PIPE TO GROUNDING STUD |          |                      |           |
|-----------------------------------|----------|----------------------|-----------|
| CATALOG NUMBER                    | PIPE IPS | DIMENSIONS IN INCHES |           |
|                                   |          | A                    | Ball Dia. |
| 17-1506-345KV                     | 2        | 2 3/4                | 8"        |
| 17-1507-345KV                     | 2 1/2    | 2 3/4                | 8"        |
| 17-1508-EHV                       | 3        | 2 7/8                | 12"       |
| 17-1509-EHV                       | 3 1/2    | 2 7/8                | 12"       |
| 17-1510-EHV                       | 4        | 2 7/8                | 12"       |
| 17-1511-EHV                       | 5        | 2 7/8                | 12"       |
| 17-1512-EHV                       | 6        | 2 7/8                | 12"       |

**17-3E**