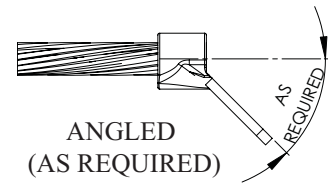
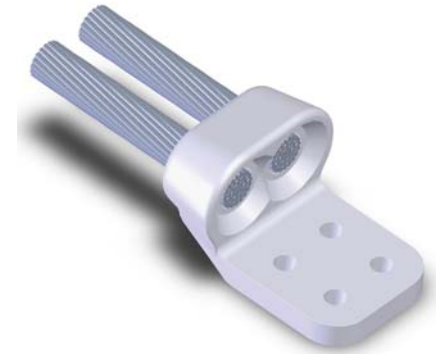
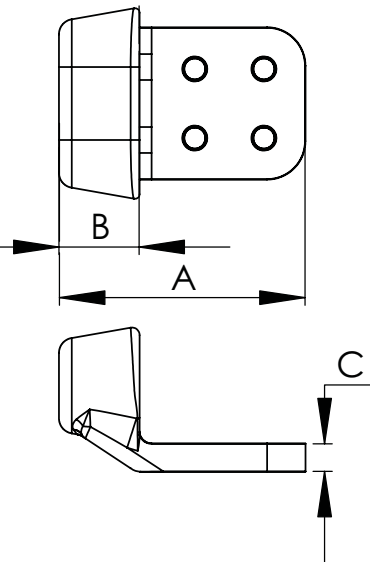


A particularly reliable and economical connector for joining a cable to a flat bar bus, the Type EHV WCP cast of a light-weight and corrosion resistant aluminum alloy makes a permanent connection. For corona free performance at 345KV available bolt shields must be used. Side formed NEMA pads are standard.

Any special tongue features will be readily supplied provided the catalog number is followed by the proper suffix. A 45 degree tongue for catalog number 18-757-EHV, for instance, should be ordered as 18-757-45-EHV. For conductor sizes larger than 1590AAC simply add the suffix “-SP” followed by the specific conductor size in brackets to item 18-787-EHV. For example, a connector for 2500AAC cable would appear as 18-787-SP(2500AAC)-EHV.



WELDED EHV CONNECTOR DOUBLE CABLE TO FLAT PAD					
CATALOG NUMBER	CABLE SIZE		DIMENSIONS IN INCHES		
	AAC	ACSR	A	B	C
18-757-EHV	715.5	605	4 1/2	1 1/2	7/16
18-760-EHV	795	636	6	1 1/2	7/16
18-763-EHV	954	795	6	1 1/2	1/2
18-766-EHV	1033.5	900	5 3/4	1 3/4	1/2
18-769-EHV	1113	954	5 3/4	1 3/4	1/2
18-772-EHV	1192.5	1033.5	6	2	1/2
18-775-EHV	1272	1113	6 1/2	2	1/2
18-778-EHV	1351.5	1192.5	6	2	9/16
18-781-EHV	1431	1272	6	2	9/16
18-784-EHV	1510.5	1351	6 1/2	2 1/2	9/16
18-787-EHV	1590	1431	7	2 1/2	9/16