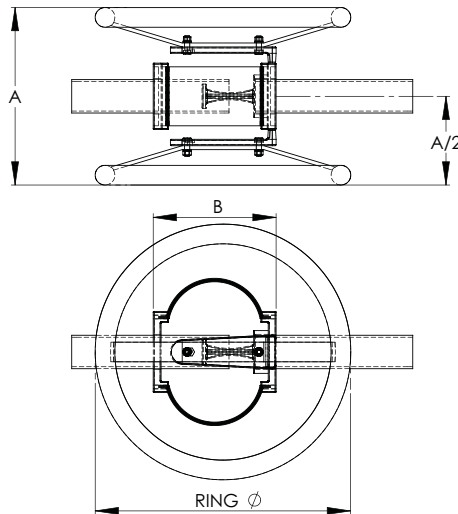


Cast of a lightweight and corrosion-resistant aluminum alloy, the economical Type EHV WEC makes a permanent and reliable connection between tubes and offers protection for equipment bushings, switch gear, and insulators by compensating for expansion and contraction due to temperature variations. The flexible shunts of laminated soft aluminum are designed to carry the maximum current of the bus it connects. The aluminum shunts are factory welded into the castings. Corona rings provide a corona free environment up to 500KV.



BOLTED EHV EXPANSION TERMINAL PIPE TO PIPE				
CATALOG	PIPE	DIMENSIONS IN INCHES		
NUMBER	IPS	A	B	RING DIA.
18-1109-EHV	2	12 1/4	14	24
18-1110-EHV	2 1/2	12 1/4	14	24
18-1111-EHV	3	12 1/4	14	24
18-1112-EHV	3 1/2	13 1/4	14	24
18-1113-EHV	4	15	14	24
18-1115-EHV	5	17	14	24
18-1116-EHV	6	18	14	30

18-14E