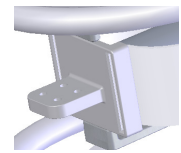
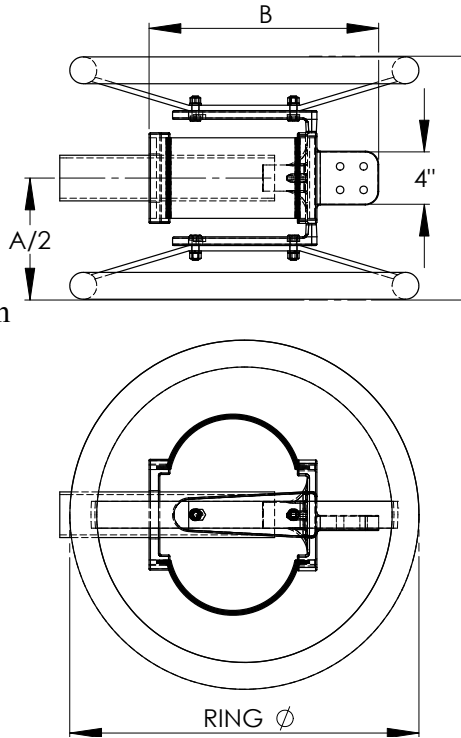


An economical connector for making a permanent union between a terminal and a tubular bus, the type EHV AETF cast of a lightweight and corrosion-resistant aluminum compensates for temperature variations and thus protects equipment bushings, switch gear, and insulators from expanding or contracting bus pressures. Flexible shunts of laminated soft aluminum are designed for carrying the maximum current of the bus it connects. The aluminum shunts are factory welded into the castings, and corona rings allow for corona free performance through 500KV.



TRANSVERSE PAD, USE SUFFIX -V
18-1140V-EHV

For EHPS (SCH80) internal pipe fittings use suffix (H). Ex. 18-1134H-EHV

WELDED EHV EXPANSION TERMINAL PIPE TO PAD				
CATALOG NUMBER	PIPE IPS	DIMENSIONS IN INCHES		
		A	B	RING DIA.
18-1134-EHV	2	17	14	24
18-1137-EHV	2 1/2	17	14	24
18-1140-EHV	3	17	14	24
18-1143-EHV	3 1/2	17	14	24
18-1146-EHV	4	18	15	24
18-1152-EHV	5	18	15	24
18-1155-EHV	6	18	15	30

18-17E