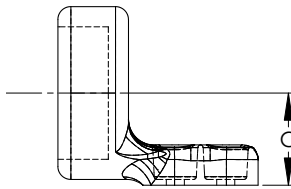
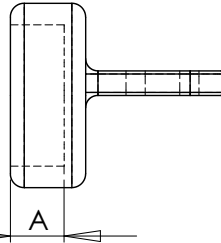
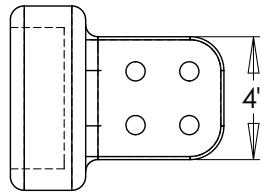
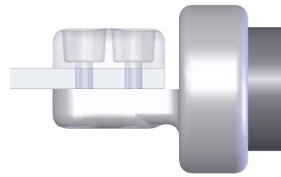


Cast of a lightweight and corrosion-resistant aluminum alloy, the Type EHV WAT secures a pipe to a flat bar bus more permanently and economically than other terminal connectors. Center formed NEMA pads are standard.

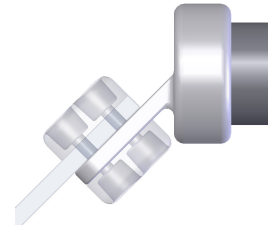
Any special tongue features will be readily provided if designated by the addition of a descriptor to the catalog number. If, for example, a side-formed tongue were requested for catalog number 18-124-EHV, that number should appear on the order as 18-124-SF-EHV-W1S. Similarly, a 45 degree tongue for the same catalog number should be written 18-124-45-EHV-W0S. When ordering either the suffix W0S (with no shield) or W1S (with one shield) must be used. Additional shields are available but must be or-



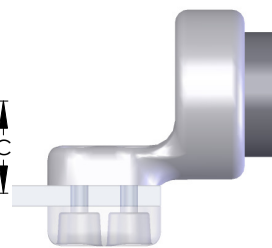
With no shield (W0S) With one shield (W1S)



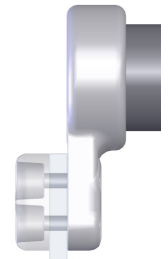
CENTER FORMED (USE SUFFIX "CFE")



ANGLED (AS REQUIRED)



SIDE FORMED (STANDARD)



90 DEGREE (USE DESCRIPTOR "E-90")

\* Specify W0S (with no shield) or W1S (With one shield)

WELDED EXTERNAL EHV TERMINAL PIPE TO FLAT PAD			
CATALOG NUMBER	PIPE IPS	DIMENSIONS IN INCHES	
		A	C
18-118-345KV-*	2	1 1/4	1 3/4
18-121-345KV-*	2 1/2	1 1/2	2 3/8
18-124-EHV-*	3	1 3/4	2 3/8
18-127-EHV-*	3 1/2	2	2 5/8
18-130-EHV-*	4	2 1/4	2 7/8
18-136-EHV-*	5	2 3/4	3 3/8
18-139-EHV-*	6	3 1/2	4