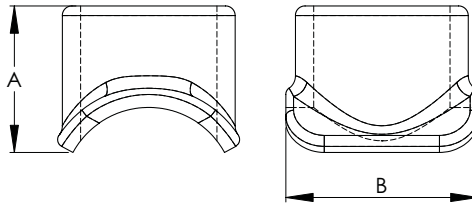


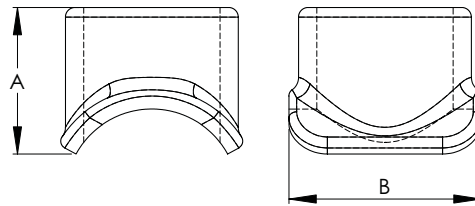
For a secure and reliable connection between a pipe main and a pipe tap at a 90½ angle, the Type EHV TTW makes a particularly effective and economical choice. It is designed to provide corona free performance up to 500KV, and is cast of a light-weight and corrosion-resistant aluminum alloy.



WELDED EHV TEE TERMINAL PIPE TO PIPE				
CATALOG NUMBER	IPS MAIN	IPS TAP	DIMENSIONS IN INCHES	
			A	B
18-160-EHV	2	2	2 1/4	3 3/8
18-166-EHV	2 1/2	2	3 5/8	3 1/2
18-167-EHV	2 1/2	2 1/2	3 7/8	4 1/4
18-173-EHV	3	2	3 1/2	3 3/4
18-174-EHV	3	2 1/2	3 1/2	4 1/4
18-175-EHV	3	3	3 1/2	5
18-181-EHV	3 1/2	2	4 1/4	3 1/2
18-182-EHV	3 1/2	2 1/2	4 1/2	4 1/4
18-183-EHV	3 1/2	3	4 5/8	5
18-184-EHV	3 1/2	3 1/2	5	5 1/2
18-190-EHV	4	2	3 3/4	3 1/2
18-191-EHV	4	2 1/2	4	4 1/4
18-192-EHV	4	3	4 1/4	5
18-193-EHV	4	3 1/2	4 1/2	5 1/2
18-194-EHV	4	4	4 1/2	6

Continued on next page.

18-3E



Continued from previous page.

WELDED EHV TEE TERMINAL PIPE TO PIPE				
CATALOG NUMBER	IPS MAIN	IPS TAP	DIMENSIONS IN INCHES	
			A	B
18-211-EHV	5	2	5 1/8	3 1/2
18-212-EHV	5	2 1/2	5 1/8	4 1/4
18-213-EHV	5	3	5 1/4	5
18-214-EHV	5	3 1/2	5 1/2	5 1/2
18-215-EHV	5	4	5 1/2	6
18-217-EHV	5	5	5 3/4	8 1/2
18-223-EHV	6	2	5 1/2	3 1/2
18-224-EHV	6	2 1/2	5 1/2	4 1/4
18-225-EHV	6	3	5 3/4	5
18-226-EHV	6	3 1/2	6	5 1/2
18-227-EHV	6	4	6	6
18-229-EHV	6	5	6 1/4	7 1/4
18-230-EHV	6	6	6 1/2	8 1/2