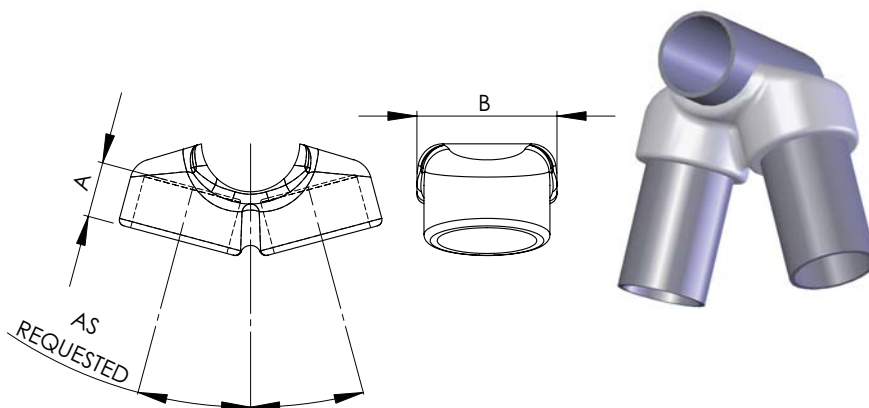


For joining a pipe main to taps whose angles vary from the perpendicular, the Type EHV TTWV offers economy and performance. Cast of a high conductivity, lightweight, and corrosion-resistant aluminum alloy, it can be used in self-supporting A-frame structures and is capable of providing corona free performance up to 500KV. To insure maximum efficiency in filling the order, the varying angles should be designated by means of a suffix added to the catalog number. A 15 degree angle tap should be ordered as 18-342-15-EHV.



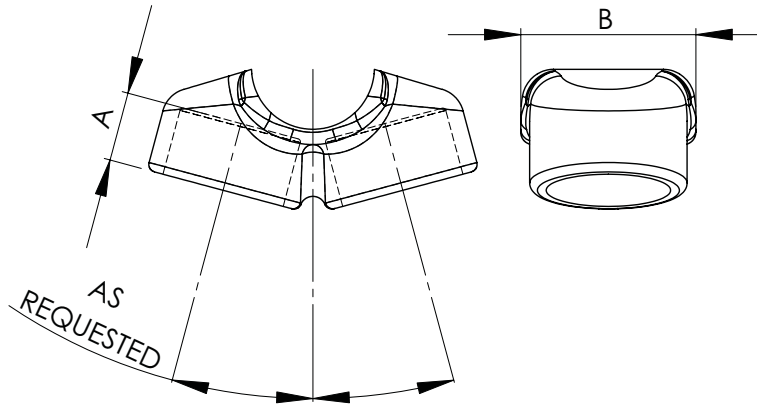
\* Specify desired angle.

WELDED EHV TERMINAL PIPE TO PIPE VEE				
CATALOG NUMBER	IPS MAIN	IPS TAP	DIMENSIONS IN INCHES	
			A	B
18-342-* -EHV	2	2	2 1/4	3 3/8
18-348-* -EHV	2 1/2	2	3 5/8	3 1/2
18-349-* -EHV	2 1/2	2 1/2	3 7/8	4 1/4
18-355-* -EHV	3	2	3 1/2	3 3/4
18-356-* -EHV	3	2 1/2	4	4 1/4
18-357-* -EHV	3	3	4 1/2	5
18-363-* -EHV	3 1/2	2	4 1/4	3 1/2
18-364-* -EHV	3 1/2	2 1/2	4 1/2	4 1/4
18-365-* -EHV	3 1/2	3	4 5/8	5
18-366-* -EHV	3 1/2	3 1/2	5	5 1/2
18-372-* -EHV	4	2	3 3/4	3 1/2
18-373-* -EHV	4	2 1/2	4	4 1/4
18-374-* -EHV	4	3	5 3/4	5 3/4
18-375-* -EHV	4	3 1/2	4 1/2	5 1/2
18-376-* -EHV	4	4	4 1/2	6

Dimensions may vary depending on angle.

Continued on next page.

**18-5E**



Continued from previous page.

\* Specify desired angle.

WELDED EHV TERMINAL PIPE TO PIPE VEE				
CATALOG NUMBER	IPS MAIN	IPS TAP	DIMENSIONS IN INCHES	
			A	B
18-393-*-EHV	5	2	5 1/8	3 1/2
18-394-*-EHV	5	2 1/2	5 1/8	4 1/4
18-395-*-EHV	5	3	5 1/4	5
18-396-*-EHV	5	3 1/2	5 1/2	5 1/2
18-397-*-EHV	5	4	5 1/2	6
18-399-*-EHV	5	5	5 3/4	8 1/2
18-405-*-EHV	6	2	5 1/2	3 1/2
18-406-*-EHV	6	2 1/2	5 1/2	4 1/4
18-407-*-EHV	6	3	5 3/4	5
18-408-*-EHV	6	3 1/2	6	5 1/2
18-409-*-EHV	6	4	6	6
18-411-*-EHV	6	5	6 1/4	7 1/4
18-412-*-EHV	6	6	6 1/2	8 1/2

Dimensions may vary depending on angle.

**18-5E** (Continued)