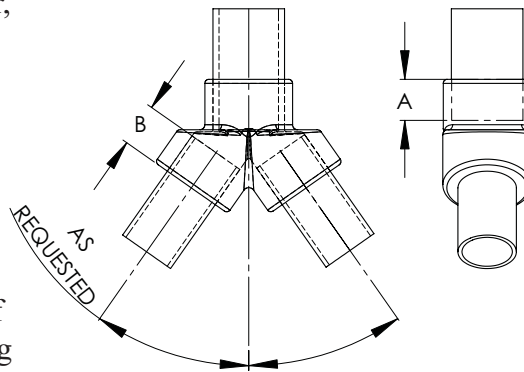


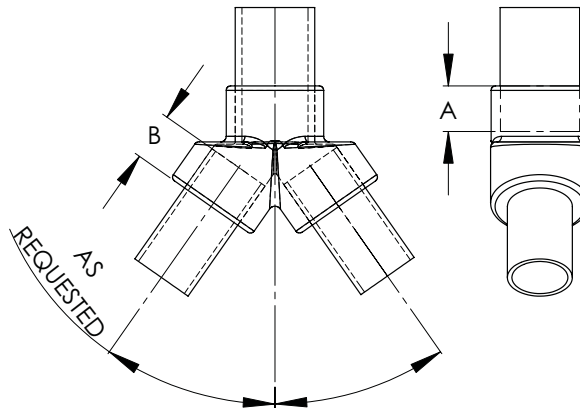
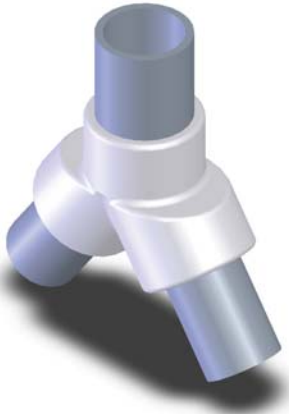
If an economical and permanent union is required between a pipe main and taps whose angles vary from the perpendicular, the Type EHV TTWP proves an efficient connector. Durable and lightweight because of its high conductivity aluminum alloy, it can be especially useful in self-supporting A-frame structures and is offers corona free performance at 500KV. Varying angles should be noted by means of a suffix added to the catalog number. If a 15 degree angle tap is needed for catalog number 18-433-EHV, for instance, the number should be written on the order as 18-413-15-EHV.



WELDED EHV TERMINAL PIPE TO PIPE “Y” STYLE				
CATALOG NUMBER	IPS MAIN	IPS TAP	DIMENSIONS IN INCHES	
			A	B
18-433-EHV	2	2	1 3/4	1 3/4
18-439-EHV	2 1/2	2	2	1 3/4
18-440-EHV	2 1/2	2 1/2	2	2
18-446-EHV	3	2	2 1/4	2 1/2
18-447-EHV	3	2 1/2	2 1/4	2 1/2
18-448-EHV	3	3	2 1/4	2 3/4
18-454-EHV	3 1/2	2	2 1/2	1 3/4
18-455-EHV	3 1/2	2 1/2	2 1/2	2
18-456-EHV	3 1/2	3	2 1/2	2 1/4
18-457-EHV	3 1/2	3 1/2	2 1/2	2 1/2
18-463-EHV	4	2	2 1/2	1 3/4
18-464-EHV	4	2 1/2	2 1/2	2
18-465-EHV	4	3	2 1/2	2 /
18-466-EHV	4	3 1/2	2 1/2	2 1/2
18-467-EHV	4	4	4 1/2	6

Continued on next page.

**18-6E**



Continued from previous page.

WELDED EHV TERMINAL PIPE TO PIPE "Y" STYLE				
CATALOG NUMBER	IPS MAIN	IPS TAP	DIMENSIONS IN INCHES	
			A	B
18-484-EHV	5	2	2 3/4	1 3/4
18-485-EHV	5	2 1/2	2 3/4	2
18-486-EHV	5	3	2 3/4	2 1/4
18-487-EHV	5	3 1/2	2 3/4	2 1/2
18-488-EHV	5	4	2 3/4	2 1/2
18-490-EHV	5	5	2 3/4	2 3/4
18-496-EHV	6	2	3	1 3/4
18-497-EHV	6	2 1/2	3	2
18-498-EHV	6	3	3	2 1/4
18-499-EHV	6	3 1/2	3	2 1/2
18-500-EHV	6	4	3	2 1/2
18-502-EHV	6	5	3	2 3/4
18-503-EHV	6	6	3	3