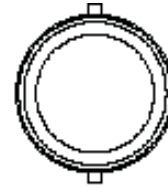
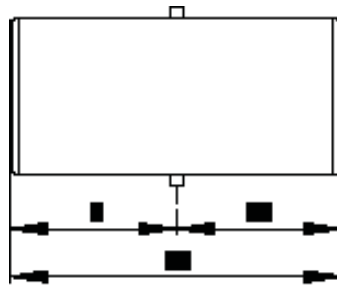


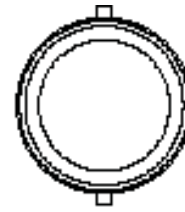
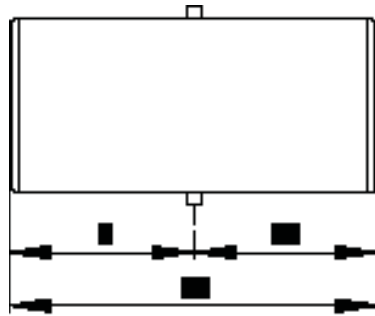
Cast of a lightweight and corrosion-resistant aluminum alloy, the Type EHV WCT and Type WCTH make reliable, economical, and permanent connections between pipes of the same or different sizes joined end on end. Corona free up to 500KV.



WELDED EHV COUPLER PIPE TO PIPE						
IPS CATALOG NUMBER	EH IPS CATALOG NUMBER	IPS MAIN	IPS TAP	DIMENSIONS IN INCHES		
				A	B	C
18-538	18-539	2	2	7	3 1/2	3 1/2
18-544	18-545	2 1/2	2	6	3	3
18-546	18-547	2 1/2	2 1/2	6 3/4	3 3/8	3 3/8
18-550	18-551	3	2	6 1/2	3 1/2	3
18-552	18-553	3	2 1/2	6 1/2	3 1/2	3
18-554	18-555	3	3	6	3	3
18-556	18-557	3 1/2	2	10	6	4
18-558	18-559	3 1/2	2 1/2	11	6	5
18-560	18-561	3 1/2	3	12	6	6
18-562	18-563	3 1/2	3 1/2	12	6	6
18-564	18-565	4	2	11	7	4
18-566	18-567	4	2 1/2	12	7	5
18-568	18-569	4	3	13	7	6
18-570	18-571	4	3 1/2	13	7	6
18-572	18-573	4	4	12	6	6

Continued on next page.

18-7E



Continued from previous page.

WELDED EHV COUPLER PIPE TO PIPE						
IPS CATALOG NUMBER	EH IPS CATALOG NUMBER	IPS MAIN	IPS TAP	DIMENSIONS IN INCHES		
				A	B	C
18-586	18-587	5	2 1/2	13	8	5
18-588	18-589	5	3	14	8	6
18-590	18-591	5	3 1/2	14	8	6
18-592	18-593	5	4	15	8	7
18-596	18-597	5	5	16	8	8
18-598	18-599	6	3	15	9	6
18-600	18-601	6	3 1/2	15	9	6
18-602	18-603	6	4	16	9	7
18-606	18-607	6	5	17	9	8
18-608	18-609	6	6	18	9	9