

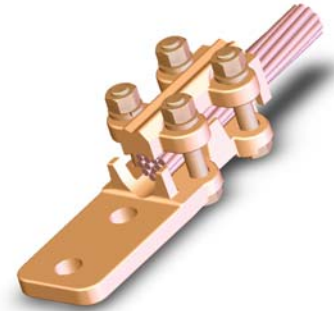
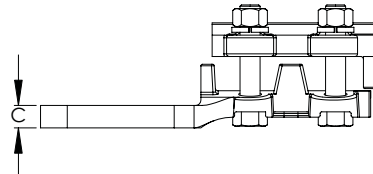
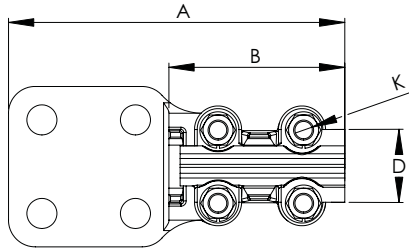
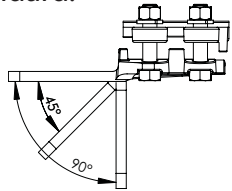
# BRONZE TERMINAL, CABLE TO FLAT

SECTION

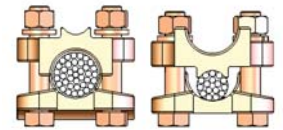
11-1

Cast of copper alloy for high conductivity and natural resistance to corrosion and stress, the Type TU-terminals includes bolts, nuts, and lock washers made of silicon bronze for clamping strength and durability. Also, to facilitate single-wrench installation, all bolts heads are captivated.

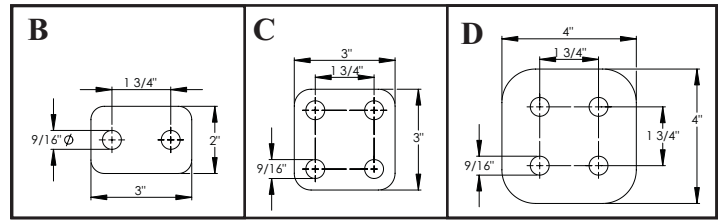
Side-formed NEMA pads are standard.



Wide Range denoted by: \*



Any special tongue features will be readily supplied provided the catalog number is followed by the proper suffix. Example: A 45 degree tongue for the same number should appear as 11-101-45.



BRONZE TERMINALS, CABLE TO FLAT PADS								
CATALOG NUMBER	PAD STYLE	CABLE AWG or MIN.	SIZE MCM MAX	DIMENSIONS IN INCHES				
				A	B	C	D	K
* 11-101	B	8	250	5 7/8	2 7/8	5/16	2	3/8
* 11-104	B	8	600	6 1/8	3 1/8	3/8	2 1/4	3/8
* 11-105	C	8	600	6 1/8	3 1/8	3/8	2 1/4	3/8
* 11-106	D	8	600	7 1/8	3 1/8	3/8	2 1/4	3/8
* 11-110	B	4/0	1000	6 7/8	3 7/8	9/16	3	1/2
* 11-111	C	4/0	1000	6 7/8	3 7/8	9/16	3	1/2
* 11-112	D	4/0	1000	7 7/8	3 7/8	9/16	3	1/2
11-113	B	1000	1500	7 1/4	4 1/4	9/16	3 1/4	1/2
11-114	C	1000	1500	7 1/4	4 1/4	9/16	3 1/4	1/2
11-115	D	1000	1500	8 1/4	4 1/4	9/16	3 1/4	1/2
11-116	B	1500	2000	7 3/8	4 3/8	5/8	3 3/8	1/2
11-117	C	1500	2000	7 3/8	4 3/8	5/8	3 3/8	1/2
11-118	D	1500	2000	8 3/8	4 3/8	5/8	3 3/8	1/2