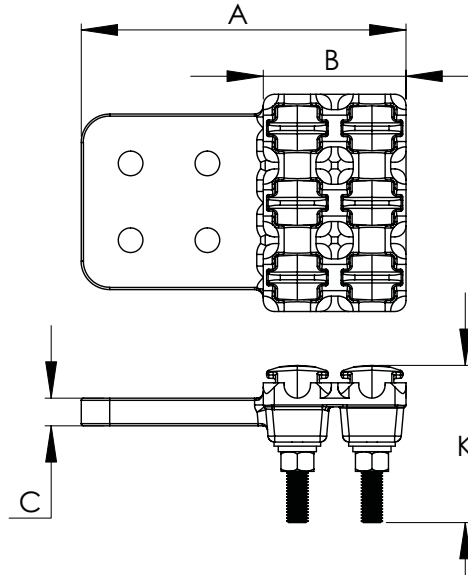
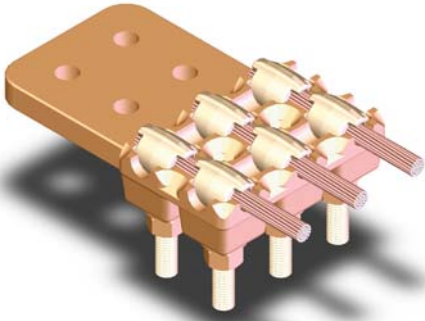


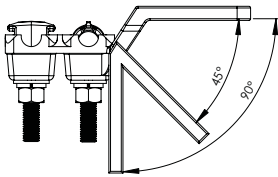
SECTION

11-10

**BRONZE BOLTED DOUBLE EYE TERMINAL,
TRIPLE CABLE TO FLAT PAD**



Cast of a high conductivity copper alloy, these triple eyebolt terminals allow for a superlative connection between three copper cables and a side formed flat pad.



Any special tongue features will be readily provided if designated by the addition of a suffix to the catalog number. For example, a 11-101-2EY should appear as 11-101-2EY-45 FOR a 45 degree angle tongue.

BRONZE TERMINALS DOUBLE CABLE TO FLAT PAD								
CATALOG NUMBER	PAD STYLE	CABLE SIZE		DIMENSIONS IN INCHES				
		AWG MIN.	or MCM MAX.	A	B	C	K	
11-231-3EY	C	8	600	6 3/4	3 5/8	3/8	4 1/4	
11-232-3EY	D	8	600	7 3/4	3 5/8	3/8	4 1/4	
11-234-3EY	C	4/0	1000	7 1/8	3 7/8	9/16	4 1/4	
11-235-3EY	D	4/0	1000	8 1/8	3 7/8	9/16	4 1/4	
11-240-3EY	C	1000	2000	7 1/2	4 1/4	5/8	4 1/4	
11-241-3EY	D	1000	2000	8 1/2	4 1/4	5/8	4 1/4	