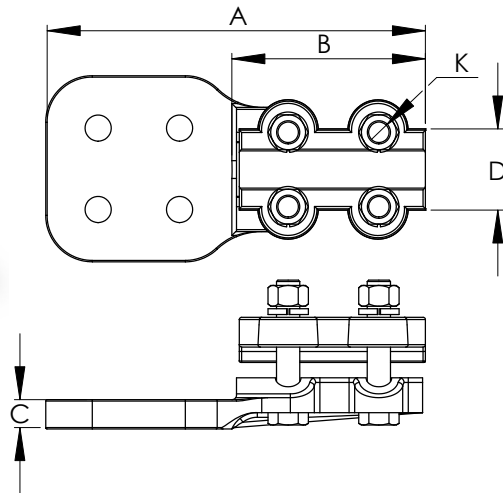
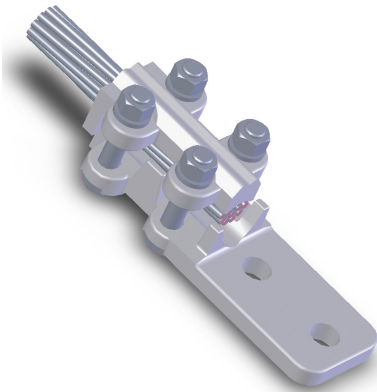


SECTION

11-1A

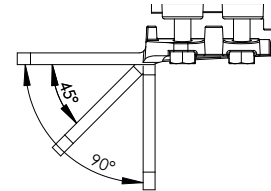
ALUMINUM TERMINAL,
CABLE TO FLAT PAD



Cast of a lightweight aluminum alloy, the type ATU terminals include clamping hardware made of high-tensile aluminum.

Bolt heads are captivated to facilitate single-wrench installation.

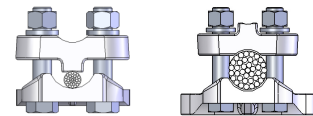
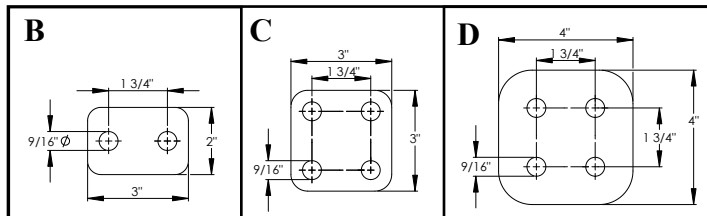
Side-formed NEMA pads are standard.



Special tongue features will be supplied, provided the catalog number is followed by the proper suffix.

Example:

A 90 degree tongue for a 11-126 should appear as 11-126-90.



Wide Range denoted by: *

CATALOG NUMBER	PAD STYLE	ALUMINUM		ACSR		DIMENSIONS IN INCHES				
		CABLE AWG MIN.	SIZE MCM MAX	CABLE AWG MIN.	SIZE MCM MAX	A	B	C	D	K
11-125*	B	4	954	4	795	7 1/4	4	5/8	1 3/4	1/2
11-126*	C	4	954	4	795	7	4	5/8	1 3/4	1/2
11-127*	D	4	954	4	795	8 3/8	4	5/8	1 3/4	1/2
11-131	B	900	1272	715.5	1113	7	3 5/8	5/8	3 3/8	1/2
11-132	C	900	1272	715.5	1113	7	3 5/8	5/8	3 3/8	1/2
11-133	D	900	1272	715.5	1113	8 1/4	3 5/8	5/8	3 3/4	1/2
11-134	B	1272	1590	1113	1272	7 5/8	4 1/4	5/8	2	1/2
11-135	C	1272	1590	1113	1272	7 5/8	4 1/4	5/8	2 1/4	1/2
11-136	D	1272	1590	1113	1272	8 7/8	4 1/4	5/8	2 1/4	1/2
11-137	B	1590	2000	1272	1590	7 7/8	4 1/2	5/8	2 3/8	5/8
11-138	C	1590	2000	1272	1590	7 13/16	4 1/2	5/8	2 3/8	5/8
11-139	D	1590	2000	1272	1590	8 3/4	4 1/2	5/8	2 3/8	5/8