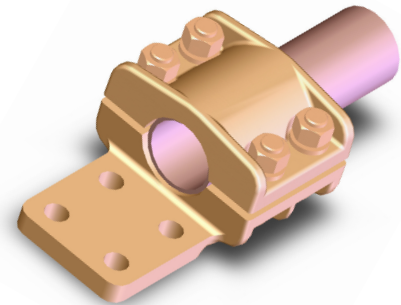


# BRONZE TERMINAL, PIPE TO FLAT PAD

SECTION

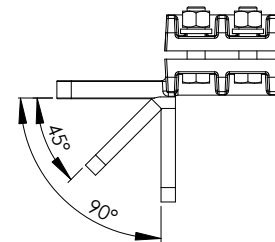
11-2



Cast of a high conductivity copper alloy, the type T pipe connector also includes bolts, nuts, and lock washers made of high strength silicon bronze.

Bolt heads are captivated to permit single-wrench installation.

Side-formed NEMA pads are standard.



Special tongue features will be supplied, provided the catalog number is followed by the proper suffix.

**Example:** A center-formed tongue for catalog number 11-140 should appear as 11-140-CF.

A 45 degree angle tongue for the same catalog number would be written as 11-140-45.

CATALOG NUMBER	PAD STYLE	PIPE SIZE IPS	DIMENSIONS IN INCHES					
			A	B	C	D	E	K
11-140	B	1/2	5	3	1/2	3/8	2 1/2	3/8
11-141	C	1/2	5	3	1/2	3/8	2 1/2	3/8
11-142	D	1/2	6	3	1/2	3/8	2 1/2	3/8
11-143	B	3/4	6	2 1/2	1	3/8	2 1/2	1/2
11-144	C	3/4	6	2 1/2	1	3/8	3 3/8	1/2
11-145	D	3/4	7	2 1/2	1	3/8	3 3/8	1/2
11-146	B	1	5 3/4	3 3/16	1	1/2	3 1/2	1/2
11-147	C	1	6 1/2	3 3/16	1 1/4	1/2	3 7/8	1/2
11-148	D	1	7 1/2	3 3/16	1 1/4	5/8	3 7/8	1/2
11-149	B	1 1/4	6 1/4	3 1/8	1 1/2	5/8	4 1/4	1/2
11-150	C	1 1/4	6 1/4	3 1/8	1 1/2	5/8	4 3/8	1/2
11-151	D	1 1/4	7 1/4	3 1/8	1 1/2	5/8	4 3/8	1/2
11-152	B	1 1/2	6 1/8	3 1/16	1 1/2	5/8	4 3/8	1/2
11-153	C	1 1/2	6 1/8	3 1/16	1 1/2	5/8	4 1/2	1/2
11-154	D	1 1/2	7 1/8	3 1/16	1 1/2	5/8	4 1/2	1/2
11-155	B	2	6 3/8	3 1/8	1 3/4	5/8	5 1/2	1/2
11-156	C	2	6 3/8	3 1/8	1 3/4	5/8	5 1/2	1/2
11-157	D	2	7 3/8	3 1/8	1 3/4	5/8	5 1/2	1/2
11-158	B	2 1/2	6 3/4	4	2	5/8	5 5/8	5/8
11-159	C	2 1/2	6 3/4	4	2	5/8	5 5/8	5/8
11-160	D	2 1/2	8 1/4	4	2	5/8	6 1/8	5/8
11-161	B	3	7 1/8	3 15/16	2 1/2	5/8	6 7/8	5/8
11-162	C	3	7 1/8	3 15/16	2 1/2	7/8	6 7/8	5/8
11-163	D	3	8 1/16	3 15/16	2 1/2	5/8	6 7/8	5/8
11-164	B	3 1/2	7 1/8	3 3/4	2 1/2	3/4	7 3/8	5/8
11-165	C	3 1/2	7 1/8	3 3/4	2 1/2	3/4	7 3/8	5/8
11-166	D	3 1/2	8 1/8	3 3/4	2 1/2	2 1/2	7 3/8	5/8
11-167	B	4	9 1/4	4 5/8	3 1/2	2/4	9 1/2	5/8
11-168	C	4	9 1/4	4 5/8	3 1/2	1	9 1/2	5/8
11-169	D	4	10 1/4	4 5/8	3 1/2	1	9 1/2	5/8
11-170	B	4 1/2	9 1/4	4 3/4	3 1/2	3/4	9 1/2	5/8
11-171	C	4 1/2	9 1/4	4 3/4	3 1/2	1	9 1/2	5/8
11-172	D	4 1/2	1 1/4	4 3/4	3 1/2	1	9 1/2	5/8
11-173	B	5	8 1/2	5 1/16	3 1/2	1	9 1/2	5/8
11-174	C	5	8 1/2	5 1/16	3 1/2	1	9 1/2	5/8
11-175	D	5	9 1/2	5 1/16	3 1/2	1	9 1/2	5/8
11-176	B	6	9 3/4	6	4 3/8	1 1/4	11	5/8
11-177	C	6	9 3/4	6	4 3/8	1 1/4	11	5/8
11-178	D	6	10 3/4	6	4 3/8	1 1/4	11	5/8

