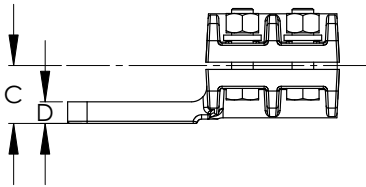
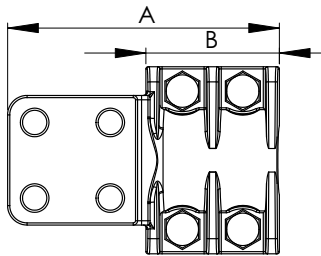
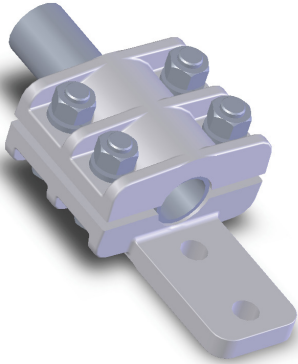
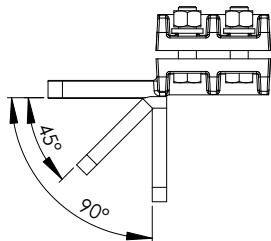


SECTION

11-2A

ALUMINUM TERMINALS,
PIPE TO FLAT PAD

Cast of a high conductivity aluminum alloy, the Type AT pipe connector also includes bolts, nuts, and lock washers made of high tensile aluminum. All bolt heads are captivated to permit single-wrench installation. Side-formed NEMA pads are standard.



Any special tongue features will be readily provided if designated by the addition of a suffix to the catalog number. For example, a center-formed tongue for catalog number 11-179 should appear as 11-179-CF while a 45 degree angle tongue for the same catalog number would be written 11-179-45.

ALUMINUM
TERMINALS, PIPE TO FLAT PADS

CATALOG NUMBER	PAD STYLE	TUBE SIZE IPS	DIMENSIONS IN INCHES					
			A	B	C	D	E	K
11-179	B	1/2	5 1/2	2 1/2	1 3/8	7/16	3 3/8	3/8
11-180	C	1/2	5 1/2	2 1/2	1 3/8	7/16	3 3/8	3/8
11-181	D	1/2	6 1/2	2 1/2	1 3/8	7/16	3 3/8	3/8
11-182	B	3/4	5 7/8	2 7/8	1 3/8	7/16	3 3/8	3/8
11-183	C	3/4	5 7/8	2 7/8	1 3/8	7/16	3 3/8	3/8
11-184	D	3/4	6 7/8	2 7/8	1 3/8	7/16	3 3/8	3/8
11-185	B	1	6 1/8	3 1/8	1 3/8	1/2	3 7/8	3/8
11-186	C	1	6 1/8	3 1/8	1 3/8	1/2	3 7/8	3/8
11-187	D	1	7 1/8	3 1/8	1 3/8	1/2	3 7/8	3/8
11-188	B	1 1/4	6 1/8	3 1/8	1 1/2	9/16	4 3/8	3/8
11-189	C	1 1/4	6 1/8	3 1/8	1 1/2	9/16	4 3/8	3/8
11-190	D	1 1/4	7 1/8	3 1/8	1 1/2	9/16	4 3/8	3/8
11-191	B	1 1/2	6 1/4	3 1/4	1 5/8	5/8	4 3/8	1/2
11-192	C	1 1/2	6 1/4	3 1/4	1 5/8	5/8	4 3/8	1/2
11-193	D	1 1/2	7 1/4	3 1/4	1 5/8	5/8	4 3/8	1/2
11-194	B	2	6 1/4	3 1/4	1 3/4	5/8	5 1/8	1/2
11-195	C	2	6 1/4	3 1/4	1 3/4	5/8	5 1/8	1/2
11-196	D	2	7 1/4	3 1/4	1 3/4	5/8	5 1/8	1/2
11-197	B	2 1/2	6 7/8	3 7/8	2 1/8	11/16	6 1/8	1/2
11-198	C	2 1/2	6 7/8	3 7/8	2 1/8	11/16	6 1/8	1/2
11-199	D	2 1/2	7 7/8	3 7/8	2 1/8	11/16	6 1/8	1/2
11-200	B	3	7	4	2 3/8	7/8	7	5/8
11-201	C	3	7	4	2 3/8	7/8	7	5/8
11-202	D	3	8	4	2 3/8	7/8	7	5/8
11-203	B	3 1/2	6 3/4	3 3/4	2 5/8	1 1/8	7 1/2	5/8
11-204	C	3 1/2	6 3/4	3 3/4	2 5/8	1 1/8	7 1/2	5/8
11-205	D	3 1/2	7 3/4	3 3/4	2 5/8	1 1/8	7 1/2	5/8
11-206	B	4	7 5/8	4 5/8	3 1/8	1 1/4	8 1/2	5/8
11-207	C	4	7 5/8	4 5/8	3 1/8	1 1/4	8 1/2	5/8
11-208	D	4	8 5/8	4 5/8	3 1/8	1 1/4	8 1/2	5/8
11-209	B	4 1/2	7 1/2	4 1/2	3 5/8	1 3/8	8 3/4	5/8
11-210	C	4 1/2	7 1/2	4 1/2	3 5/8	1 3/8	8 3/4	5/8
11-211	D	4 1/2	8 1/2	4 1/2	3 5/8	1 3/8	8 3/4	5/8
11-212	B	5	8	5	3 3/4	1 1/2	9 5/8	5/8
11-213	C	5	8	5	3 3/4	1 1/2	9 5/8	5/8
11-214	D	5	9	5	3 3/4	1 1/2	9 5/8	5/8
11-215	B	6	9	6	4 3/8	1 3/4	11	5/8
11-216	C	6	9	6	4 3/8	1 3/4	11	5/8
11-217	D	6	10	6	4 3/8	1 3/4	11	5/8