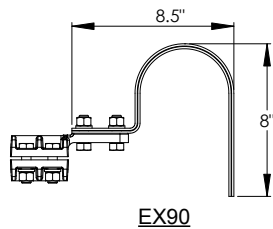
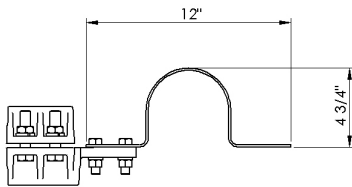
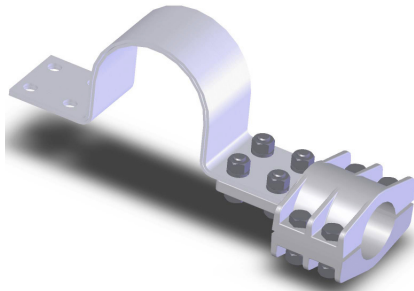


SECTION

11-2AEX

ALUMINUM EXPANSION TERMINAL,
PIPE TO FLAT PAD



Cast of a high conductivity aluminum alloy, the type ATEX pipe connector also includes bolts, nuts, and lock washers made of high tensile aluminum for durability and clamping efficiency.

Aluminum pad surface is coated with contact sealant and bolted to laminated shunt at the factory. Preformed copper laminated shunt has tin plated contacts.

Use suffix EX90 for 90 degree expansion terminal as illustrated.

Example: 11-179-EX90

| CATALOG NUMBER | PAD STYLE | TUBE SIZE IPS | DIMENSIONS IN INCHES | | | | | |
|----------------|-----------|---------------|----------------------|---------|--------|-------|--------|-----|
| | | | A | B | C | D | E | K |
| 11-179-EX | B | 1/2 | 5 | 4 | 1/2 | 3/8 | 2 7/8 | 1/2 |
| 11-180-EX | C | 1/2 | 5 | 4 | 1/2 | 3/8 | 2 7/8 | 1/2 |
| 11-181-EX | D | 1/2 | 6 | 4 | 1/2 | 3/8 | 2 7/8 | 1/2 |
| 11-182-EX | B | 3/4 | 6 1/16 | 2 3/4 | 1 | 1/2 | 3 3/8 | 1/2 |
| 11-183-EX | C | 3/4 | 6 1/16 | 2 3/4 | 1 | 1/2 | 3 3/8 | 1/2 |
| 11-184-EX | D | 3/4 | 7 1/16 | 2 3/4 | 1 | 1/2 | 3 3/8 | 1/2 |
| 11-185-EX | B | 1 | 6 1/2 | 3 3/16 | 1 3/16 | 1/2 | 3 7/8 | 1/2 |
| 11-186-EX | C | 1 | 6 7/16 | 3 3/16 | 1 1/4 | 1/2 | 3 7/8 | 1/2 |
| 11-187-EX | D | 1 | 7 7/16 | 3 3/16 | 1 1/4 | 1/2 | 3 7/8 | 1/2 |
| 11-188-EX | B | 1 1/4 | 6 1/2 | 3 1/8 | 1 1/2 | 1/2 | 4 5/16 | 1/2 |
| 11-189-EX | C | 1 1/4 | 6 1/2 | 3 1/8 | 1 1/2 | 1/2 | 4 5/16 | 1/2 |
| 11-190-EX | D | 1 1/4 | 7 1/2 | 3 1/8 | 1 1/2 | 1/2 | 4 5/16 | 1/2 |
| 11-191-EX | B | 1 1/2 | 6 5/16 | 3 1/16 | 1 1/2 | 5/8 | 4 3/8 | 1/2 |
| 11-192-EX | C | 1 1/2 | 6 5/16 | 3 1/16 | 1 1/2 | 5/8 | 4 3/8 | 1/2 |
| 11-193-EX | D | 1 1/2 | 7 5/16 | 3 1/16 | 1 1/2 | 5/8 | 4 3/8 | 1/2 |
| 11-194-EX | B | 2 | 6 1/2 | 3 1/8 | 1 3/4 | 5/8 | 5 1/8 | 1/2 |
| 11-195-EX | C | 2 | 6 1/2 | 3 1/8 | 1 3/4 | 5/8 | 5 1/8 | 1/2 |
| 11-196-EX | D | 2 | 7 7/16 | 3 1/8 | 1 3/4 | 5/8 | 5 1/8 | 1/2 |
| 11-198-EX | C | 2 1/2 | 7 1/8 | 4 | 2 | 5/8 | 6 1/8 | 5/8 |
| 11-199-EX | D | 2 1/2 | 8 1/4 | 4 | 2 | 5/8 | 6 1/8 | 5/8 |
| 11-201-EX | C | 3 | 7 1/8 | 3 15/16 | 2 1/2 | 5/8 | 7 | 5/8 |
| 11-202-EX | D | 3 | 8 1/8 | 3 15/16 | 2 1/2 | 5/8 | 7 | 5/8 |
| 11-204-EX | C | 3 1/2 | 7 | 3 3/4 | 2 5/8 | 3/4 | 7 1/2 | 5/8 |
| 11-205-EX | D | 3 1/2 | 8 | 3 3/4 | 2 5/8 | 3/4 | 7 1/2 | 5/8 |
| 11-208-EX | D | 4 | 8 7/8 | 4 5/8 | 3 | 3/4 | 8 1/2 | 5/8 |
| 11-211-EX | D | 4 1/2 | 8 7/8 | 4 3/4 | 3 | 3/4 | 9 1/8 | 5/8 |
| 11-214-EX | D | 5 | 9 1/2 | 5 1/16 | 3 1/2 | 1 | 9 5/8 | 5/8 |
| 11-217-EX | D | 6 | 10 3/4 | 6 | 4 1/4 | 1 1/4 | 11 | 5/8 |

