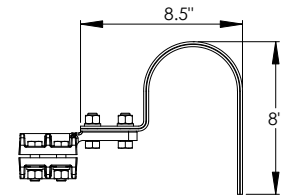
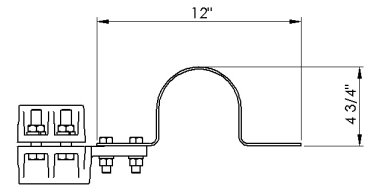
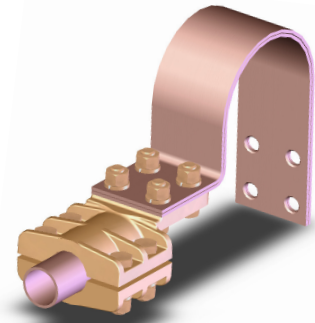


BRONZE EXPANSION TERMINAL, PIPE TO FLAT PAD

SECTION

11-2EX

CATALOG NUMBER	PAD STYLE	PIPE SIZE IPS	DIMENSIONS IN INCHES					
			A	B	C	D	E	K
11-140-EX	B	1/2	5	3	1/2	3/8	2 1/4	3/8
11-141-EX	C	1/2	5	3	1/2	3/8	2 1/4	3/8
11-142-EX	D	1/2	6	3	1/2	3/8	2 1/4	3/8
11-143-EX	B	3/4	6	2 1/2	1	3/8	3 3/8	1/2
11-144-EX	C	3/4	6	2 1/2	1	3/8	3 3/8	1/2
11-145-EX	D	3/4	7	2 1/2	1	3/8	3 3/8	1/2
11-146-EX	B	1	5 3/4	3 3/16	1	1/2	3 7/8	1/2
11-147-EX	C	1	6 1/2	3 3/16	1 1/4	1/2	3 7/8	1/2
11-148-EX	D	1	7 1/2	3 3/16	1 1/4	5/8	3 7/8	1/2
11-149-EX	B	1 1/4	6 1/4	3 1/8	1 1/2	5/8	4 5/16	1/2
11-150-EX	C	1 1/4	6 1/4	3 1/8	1 1/2	5/8	4 5/16	1/2
11-151-EX	D	1 1/4	7 1/4	3 1/8	1 1/2	5/8	4 5/16	1/2
11-152-EX	B	1 1/2	6 1/8	3 1/16	1 1/2	5/8	4 3/8	1/2
11-153-EX	C	1 1/2	6 1/8	3 1/16	1 1/2	5/8	4 3/8	1/2
11-154-EX	D	1 1/2	7 1/8	3 1/16	1 1/2	5/8	4 3/8	1/2
11-155-EX	B	2	6 3/8	3 1/8	1 3/4	5/8	5 1/8	1/2
11-156-EX	C	2	6 3/8	3 1/8	1 3/4	5/8	5 1/8	1/2
11-157-EX	D	2	7 3/8	3 1/8	1 3/4	5/8	5 1/8	1/2
11-159-EX	C	2 1/2	6 3/4	4	2	5/8	6 1/8	5/8
11-160-EX	D	2 1/2	8 1/4	4	2	5/8	6 1/8	5/8
11-162-EX	C	3	7 1/8	3 15/16	2 1/2	7/8	7	5/8
11-163-EX	D	3	8 1/16	3 15/16	2 1/2	5/8	7	5/8
11-165-EX	C	3 1/2	7 1/8	3 3/4	2 1/2	3/4	7 1/2	5/8
11-166-EX	D	3 1/2	8 1/8	3 3/4	2 1/2	2 1/2	7 1/2	5/8
11-168-EX	C	4	9 1/4	4 5/8	3 1/2	1	8 1/2	5/8
11-169-EX	D	4	10 1/4	4 5/8	3 1/2	1	8 1/2	5/8
11-171-EX	C	4 1/2	9 1/4	4 3/4	3 1/2	1	9 1/8	5/8
11-172-EX	D	4 1/2	1 1/4	4 3/4	3 1/2	1	9 1/8	5/8
11-174-EX	C	5	8 1/2	5 1/16	3 1/2	1	9 5/8	5/8
11-175-EX	D	5	9 1/2	5 1/16	3 1/2	1	9 5/8	5/8
11-177-EX	C	6	9 3/4	6	4 3/8	1 1/4	11	5/8
11-178-EX	D	6	10 3/4	6	4 3/8	1 1/4	11	5/8



EX90

Cast of a high conductivity copper alloy, the type TEX pipe connector includes bolts, nuts, and lock washers made of high strength silicon bronze.

Bronze pad surface is coated with contact sealant and bolted to laminated shunt at factory.

Use suffix EX90 for 90 degree expansion terminal as illustrated.

Example: 11-150-EX90

