

BRONZE TERMINAL, UNIVERSAL CROSS CONNECTOR

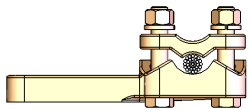
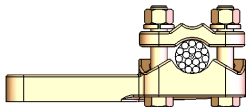
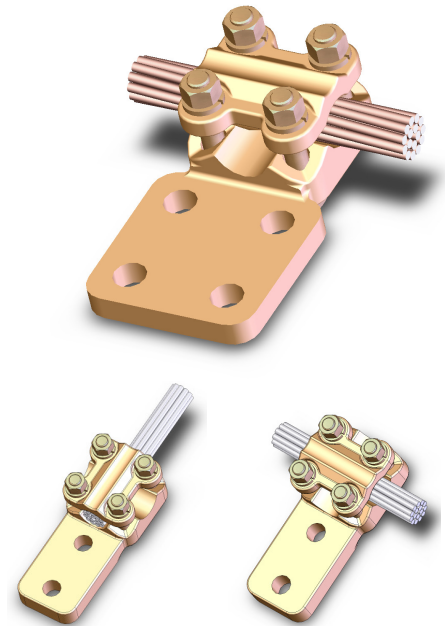
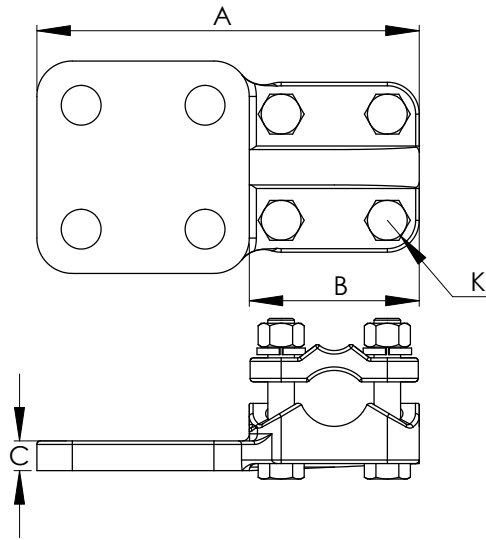
SECTION

11-3

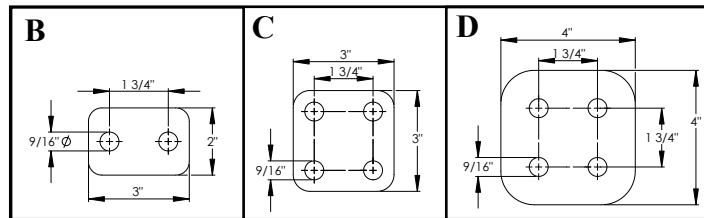
In addition to covering a wide cable range, the versatile type UCT connector features front and side entrances for adaptability in the field.

It utilizes a high conductivity copper alloy with clamping hardware made of high strength silicon bronze.

Bolt heads are captivated to permit single-wrench installation.



Wide Range



CATALOG NUMBER	PAD STYLE	CABLE SIZE		DIMENSIONS IN INCHES			
		AWG MIN.	MCM MAX.	A	B	C	K
11-218	B	2	800	6	2 3/4	1/2	3/8
11-219	C	2	800	6	2 3/4	1/2	3/8
11-220	D	2	800	6 3/4	2 3/8	1/2	3/8
11-221	B	4/0	1500	6 3/8	3 3/8	1/2	1/2
11-222	C	4/0	1500	6 3/8	3 3/8	1/2	1/2
11-223	D	4/0	1500	7 3/8	3 3/8	1/2	1/2
11-224	B	1000	2000	7 1/8	3 5/8	5/8	1/2
11-225	C	1000	2000	7 1/8	3 5/8	5/8	1/2
11-226	D	1000	2000	8 1/8	3 5/8	5/8	1/2