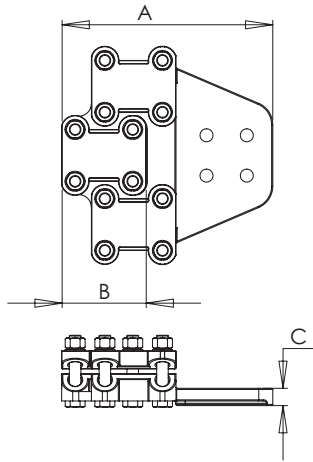
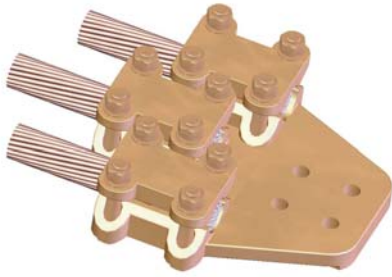
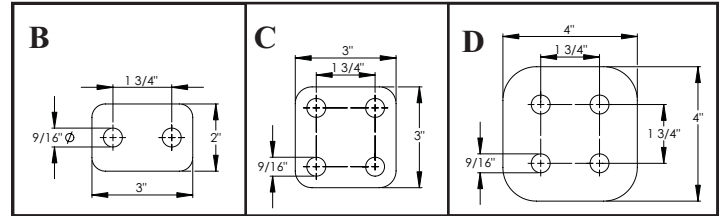
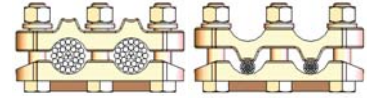


SECTION
11-4-3COND

**BRONZE AND ALUMINUM TERMINALS,
TRIPLE CABLE TO FLAT PAD**



Wide Range
denoted by: *



Bronze straight bolt terminals are supplied with silicon bronze bolts, nuts and lock-washers. Bolt heads are captivated in casting to facilitate single wrench installation. Side-formed pads with NEMA hole spacing are standard.

Special tongue features will be readily supplied provided the catalog number is followed by the proper suffix. Example: 11-230-3COND-90-WR (90 degree angle terminal).

BRONZE TERMINALS DOUBLE CABLE TO FLAT PAD							
CATALOG NUMBER	PAD STYLE	CABLE SIZE		DIMENSIONS IN INCHES			
		AWG MIN.	MCM MAX.	A	B	C	K
11-230-3COND	B	8	600	6 1/8	3 1/8	3/8	1/2
11-231-3COND	C	8	600	6 1/8	3 1/8	3/8	1/2
11-232-3COND	D	8	600	7 1/8	3 1/8	3/8	1/2
11-233-3COND	B	4/0	1000	6 7/8	3 7/8	9/16	1/2
11-234-3COND	C	4/0	1000	6 7/8	3 7/8	9/16	1/2
11-235-3COND	D	4/0	1000	7 7/8	3 7/8	9/16	1/2
11-239-3COND	B	1000	2000	7 1/2	4 1/2	5/8	1/2
11-240-3COND	C	1000	2000	7 1/2	4 1/2	5/8	1/2
11-241-3COND	D	1000	2000	8 1/2	4 1/2	5/8	1/2

