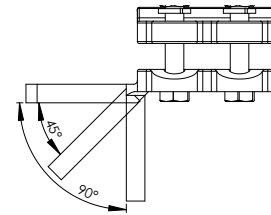
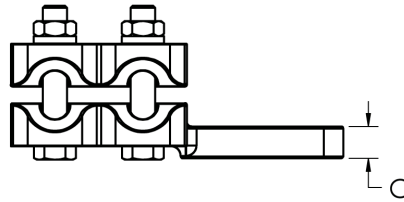
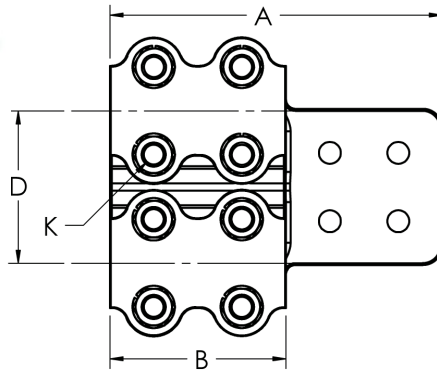
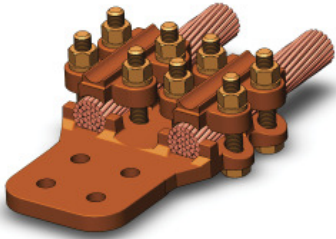


# BRONZE TERMINAL, DOUBLE CABLE TO FLAT PAD



Bronze straight bolt terminals are supplied with silicon bronze bolts, nuts and lockwashers.

Bolt heads are captivated in casting to facilitate single wrench installation.

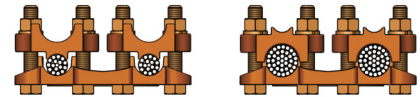
Side-formed pads with NEMA hole spacing are standard.

Special tongue features will be supplied, provided the catalog number is followed by the proper suffix.

### Example:

A 90 degree angle terminal for catalog number 11-230 should appear as 11-230-90.

Wide Range



CATALOG NUMBER	PAD STYLE	CABLE SIZE		DIMENSIONS IN INCHES				
		AWG MIN.	MCM MAX.	A	B	C	D	K
11-230	B	8	600	6 3/8	3 1/8	1/2	1 5/8	3/8
11-231	C	8	600	6 3/8	3 1/8	1/2	1 5/8	3/8
11-232	D	8	600	7 3/4	3 1/8	1/2	1 5/8	3/8
11-233	B	4/0	1000	7 1/8	3 3/4	5/8	2	1/2
11-234	C	4/0	1000	7 1/8	3 3/4	5/8	2	1/2
11-235	D	4/0	1000	7 3/4	3 3/4	5/8	3 3/8	1/2
11-239	B	1000	2000	8 3/4	5 1/4	5/8	3 3/4	1/2
11-240	C	1000	2000	8 3/4	5 1/4	5/8	3 3/4	1/2
11-241	D	1000	2000	9 3/4	5 1/4	5/8	3 3/4	1/2