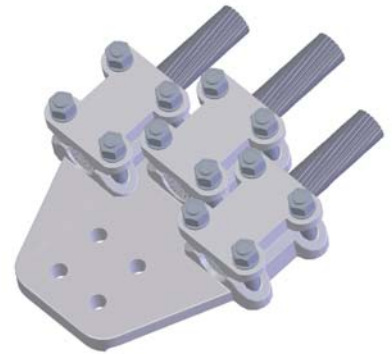
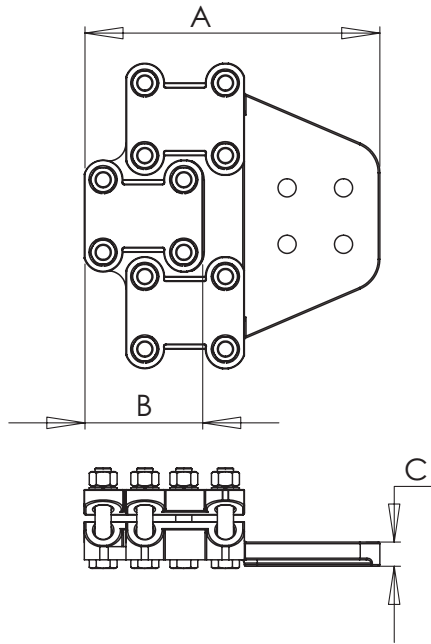
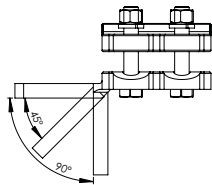


# ALUMINUM TERMINALS, TRIPLE CABLE TO FLAT PAD

SECTION  
11-4A-3COND

Aluminum terminals are supplied with aluminum bolts, nuts and lockwashers. Bolt heads are captivated in casting to facilitate single wrench installation. Side-formed pads with NEMA hole spacing are standard.

Special tongue features will be readily supplied provided the catalog number is followed by the proper suffix. Example: 11-248-90-WR (90 degree angle terminal).



Wide Range  
denoted by: \*

ALUMINUM TERMINALS DOUBLE CABLE TO FLAT PAD									
CATALOG NUMBER	PAD STYLE	ALUMINUM CABLE SIZE		ACSR CABLE SIZE		DIMENSIONS IN INCHES			
		AWG MIN.	MCM MAX.	AWG MIN.	MCM MAX.	A	B	C	K
11-248-3COND*	B	4	795	4	954	7	4	7/16	1/2
11-249-3COND*	C	4	795	4	954	7	4	7/16	1/2
11-250-3COND*	D	4	795	4	954	8	4	7/16	1/2
11-251-3COND	B	900	1250	715.5	1113	7 3/8	4 3/8	7/16	1/2
11-252-3COND	C	900	1250	715.5	1113	7 3/8	4 3/8	7/16	1/2
11-253-3COND	D	900	1250	715.5	1113	8 3/8	4 3/8	7/16	1/2
11-254-3COND	B	1272	1590	1113	1250	7 3/8	4 3/8	3/4	5/8
11-255-3COND	C	1272	1590	1113	1250	7 3/8	4 3/8	3/4	5/8
11-256-3COND	D	1272	1590	1113	1250	8 3/8	4 3/8	3/4	5/8
11-260-3COND	B	1590	2000	1272	1590	7 1/2	4 1/2	3/4	5/8
11-261-3COND	C	1590	2000	1272	1590	7 1/2	4 1/2	3/4	5/8
11-262-3COND	D	1590	2000	1272	1590	8 1/2	4 1/2	3/4	5/8