

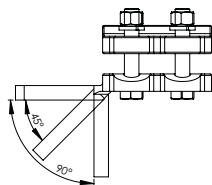
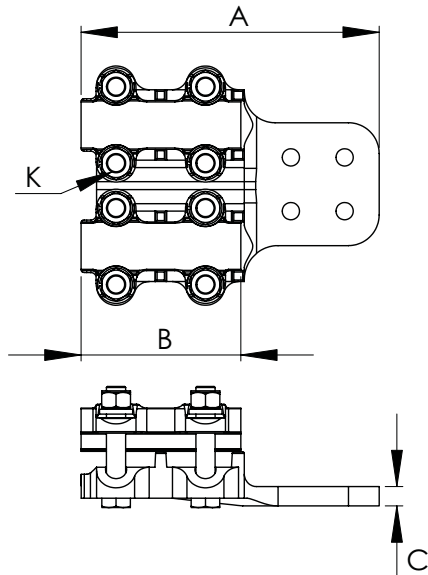
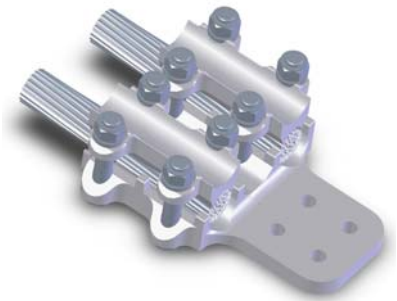
ALUMINUM TERMINALS, DOUBLE CABLE TO FLAT PAD

SECTION

11-4A

Aluminum terminals are supplied with aluminum bolts, nuts and lockwashers. Bolt heads are captivated in casting to facilitate single wrench installation. Side-formed pads with NEMA hole spacing are standard.

Special tongue features will be readily supplied provided the catalog number is followed by the proper suffix. Example: 11-248-90-WR (90 degree angle terminal).



Wide Range
denoted by: *

ALUMINUM TERMINALS DOUBLE CABLE TO FLAT PAD									
CATALOG NUMBER	PAD STYLE	ALUMINUM CABLE SIZE		ACSR CABLE SIZE		DIMENSIONS IN INCHES			
		AWG MIN.	or MCM MAX.	AWG MIN.	or MCM MAX.	A	B	C	K
11-248*	B	4	954	4	795	7	4	7/16	1/2
11-249*	C	4	954	4	795	7	4	7/16	1/2
11-250*	D	4	954	4	795	8	4	7/16	1/2
11-251	B	900	1250	715.5	1113	7 3/8	4 3/8	7/16	1/2
11-252	C	900	1250	715.5	1113	7 3/8	4 3/8	7/16	1/2
11-253	D	900	1250	715.5	1113	8 3/8	4 3/8	7/16	1/2
11-254	B	1272	1590	1113	1250	7 3/8	4 3/8	3/4	5/8
11-255	C	1272	1590	1113	1250	7 3/8	4 3/8	3/4	5/8
11-256	D	1272	1590	1113	1250	8 3/8	4 3/8	3/4	5/8
11-260	B	1590	2000	1272	1590	7 1/2	4 1/2	3/4	5/8
11-261	C	1590	2000	1272	1590	7 1/2	4 1/2	3/4	5/8
11-262	D	1590	2000	1272	1590	8 1/2	4 1/2	3/4	5/8