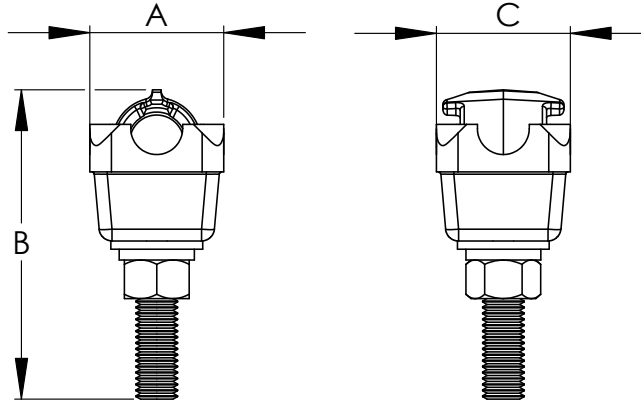
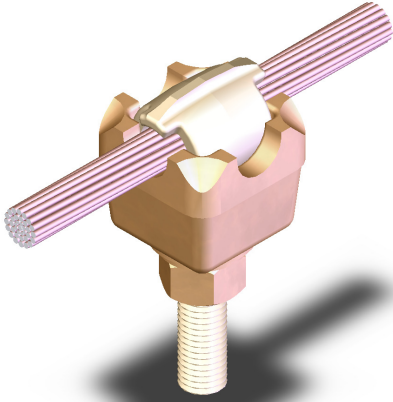


SECTION

11-5

BRONZE BOLTED EYE TERMINAL,
SINGLE CABLE TO FLAT

Cast of a high conductivity copper alloy, these terminals are ideal for connecting copper cable directly to a flat pad.

Designed for grounding or power applications.

CATALOG NUMBER	CABLE SIZE		DIMENSIONS IN INCHES		
	AWG MIN.	MCM MAX.	A	B	C
TT-101A-1	8	250	1 1/2	4 1/4	1 5/8
TT-102A-1	1/0	500	1 3/4	3 3/4	1 1/4
TT-103A-1	500	1000	2 1/4	4 1/2	2