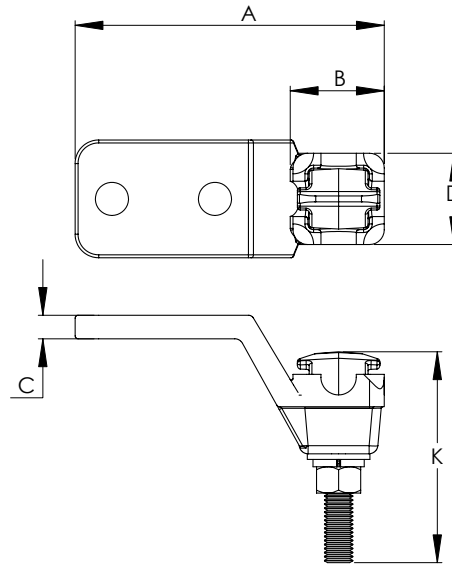
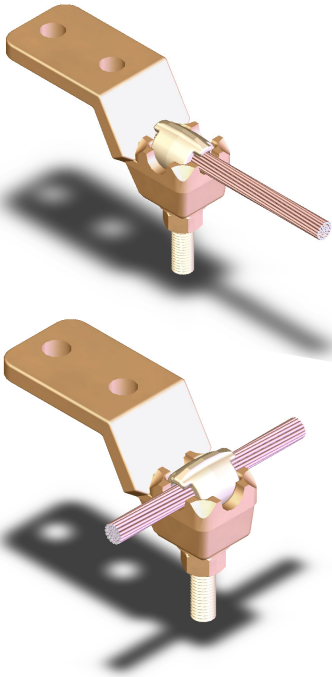


SECTION

11-7

BRONZE BOLTED EYE TERMINAL,
SINGLE CABLE TO FLAT PAD

Cast of a high conductivity copper alloy, these single eyebolt terminals provide an ideal connection between one copper cable and a side formed flat pad.

Multiple pad sizes available.

CATALOG NUMBER	PAD STYLE	CABLE SIZE		DIMENSIONS IN INCHES				
		AWG MIN.	MCM MAX.	A	B	C	D	K
11-101-1EY	B	8	250	5 1/4	1 3/4	3/8	1 1/2	4 1/4
11-104-1EY	B	1/0	500	5 3/4	2	1/2	1 7/8	4 1/4
11-105-1EY	C	1/0	500	5 3/4	2	1/2	1 7/8	4 1/4
11-110-1EY	B	500	1000	6 1/8	2 1/2	1/2	2 3/8	4 1/4
11-111-1EY	C	500	1000	6 1/8	2 1/2	1/2	2 3/8	4 1/4
11-113-1EY	B	1000	1500	5 1/2	2 1/2	1/2	2 1/4	4 1/4
11-114-1EY	C	1000	1500	5 1/2	2 1/2	1/2	2 1/4	4 1/4