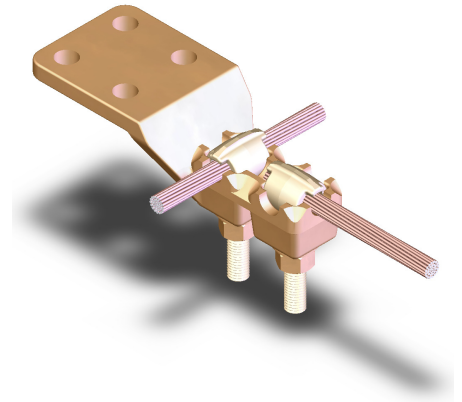
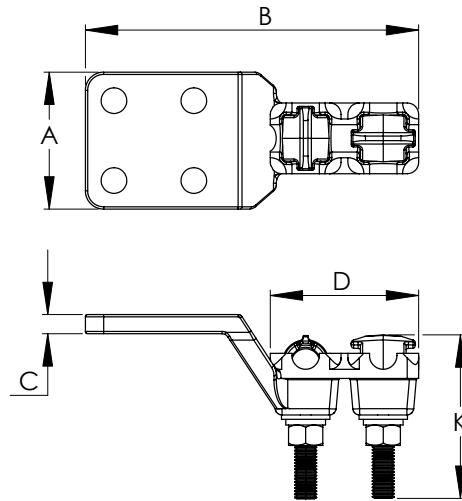


# BRONZE BOLTED DOUBLE EYE TERMINAL, DOUBLE OR SINGLE CABLE TO FLAT PAD

SECTION

11-8



CATALOG NUMBER	PAD STYLE	CABLE SIZE		DIMENSIONS IN INCHES				
		AWG MIN.	MCM MAX.	A	B	C	D	K
11-101-2EY	B	8	250	2	6 7/8	3/8	3 3/8	4 1/4
11-104-2EY	B	1/0	500	2	7 3/4	1/2	4	4 1/4
11-105-2EY	C	1/0	500	3	7 3/4	1/2	4	4 1/4
11-110-2EY	B	500	1000	2	8 3/8	1/2	4 1/2	4 1/4
11-111-2EY	C	500	1000	3	8 3/8	1/2	4 1/2	4 1/4
11-113-2EY	B	1000	1500	2	9	1/2	4 3/4	4 1/4
11-114-2EY	C	1000	1500	3	9	1/2	4 3/4	4 1/4
11-116-2EY	B	1500	2000	2	9 7/8	1/2	5	4 1/4
11-117-2EY	C	1500	2000	3	9 7/8	1/2	5	4 1/4

Cast of a high conductivity copper alloy, these single eyebolt terminals allow for a superlative connection between one or two copper cables and a side formed flat pad.

Multiple pad sizes available.