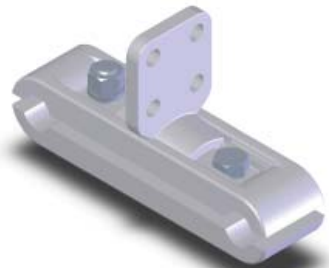
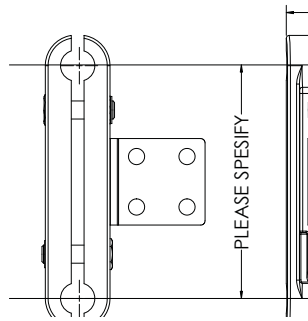
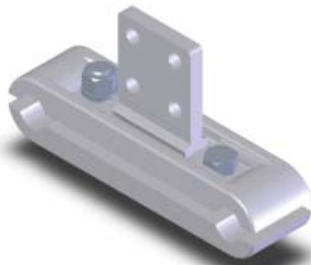


SECTION

110-1CST

BRONZE / ALUMINUM PARALLEL CABLE SPACERS



90 DEGREE ROTATED PAD

Bronze Parallel Cable Spacer Tee:

The type CST cable spacer tee features clamping members made of high strength, high conductivity copper alloy.

The bolts, nuts, and lockwashers are silicon bronze for clamping efficiency and resistance to corrosion. Width (A) will vary with length.

Note: To obtain a cable spacer terminal for (2) 300 MCM copper conductors spaced at 8 inches with a 4 hole NEMA pad rotated 90 degree add suffix "-8 -90".

Example: 110-103-CSTC -8-90

BRONZE CABLE SPACER TEE							
CATALOG NUMBER	PAD STYLE	CABLE MAIN		CABLE TAP		DIMENSIONS IN INCHES	
		AWG MIN	MCM MAX	AWG MIN	MCM MAX	A	K
110-101-CSTB*	B	4	250	4	250	1 1/4	3/8
110-101-CSTC*	C	4	250	4	250	1 1/4	3/8
110-101-CSTD*	D	4	250	4	250	1 1/4	3/8
110-103-		250	500	250	500	1 7/8	1/2
110-105-		500	1000	500	1000	2	1/2
110-107-		1000	1500	1000	1500	2	5/8

*Please specify cable spacing (in.)

Aluminum Parallel Cable Spacer Tee:

A high strength, high conductivity aluminum cable spacer terminal, the type CSTA includes clamping hardware made of high-tensile aluminum for dependability and durability in the field. To facilitate installation, all bolt heads are captivated.

ALUMINUM CABLE SPACER TEE						
CATALOG NUMBER	AAC AWG OR MCM		ACSR AWG OR MCM		DIMENSIONS IN INCHES	
	MIN-MAX	MIN-MAX	MIN-MAX	MIN-MAX	A	K
110-111-CSTB*	4-250(37)	4-250(37)	4(6/1)-4/0(6/1)	4(6/1)-4/0(6/1)	1 3/4	1/2
110-111-CSTC*	4-250(37)	4-250(37)	4(6/1)-4/0(6/1)	4(6/1)-4/0(6/1)	1 3/4	1/2
110-111-CSTD*	4-250(37)	4-250(37)	4(6/1)-4/0(6/1)	4(6/1)-4/0(6/1)	1 3/4	1/2
110-113-	250(7)-400(37)	250(7)-400(37)	4/0(6/1)-336.4(26/7)	4/0(6/1)-336.4(26/7)	1 3/4	1/2
110-115-	350(19)-600(61)	350(19)-600(61)	336.4(18/1)-477(30/7)	336.4(18/1)-477(30/7)	1 3/4	1/2
110-117-	600(61)-900(61)	600(61)-900(61)	556.5(18/1)-795(54/7)	556.5(18/1)-795(54/7)	1 3/4	1/2
110-119-	900(61)-1250(91)	900(61)-1250(91)	715.5-1113	715.5-1113	2 1/8	5/8
110-121-	1272(61)-1590(61)	1272(61)-1590(61)	1113-1250	1113-1250	2 1/8	5/8
110-123-	1590(61)-2000(127)	1590(61)-2000(127)	1272-1590	1272-1590	2 1/8	5/8

*Please specify cable spacing (in.)

Not designed for continuous full current load.