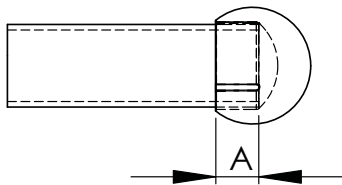
**Bronze External Corona Bells:**

Designed for a drive fit as the only means of connecting it to the pipe, the type BCBE made of high strength bronze is primarily used for sealing off tubes and corona reduction.

**Aluminum External Corona Bells:**

A lightweight, high strength aluminum connector, the type ACBE is designed for a drive fit as the only means of connecting it to the pipe and is effective in sealing off tubes or in corona reduction.

BRONZE EXTERNAL CORONA BELLS		
CATALOG NUMBER	PIPE SIZE	DIMENSIONS IN INCHES
		A
111-153	1/2	1
111-154	3/4	1
111-155	1	1
111-156	1 1/4	1 1/8
111-160	1 1/2	1 1/4
111-161	2	1 1/2
111-162	2 1/2	2
111-163	3	2
111-164	3 1/2	2 1/8
111-165	4	2 1/4
111-166	4 1/2	2 1/2
111-167	5	2 5/8
111-168	6	2 5/8

ALUMINUM EXTERNAL CORONA BELLS		
CATALOG NUMBER	PIPE SIZE	DIMENSIONS IN INCHES
		A
111-169	1/2	1
111-170	3/4	1
111-171	1	1
111-172	1 1/4	1 1/8
111-173	1 1/2	1 1/4
111-174	2	1 1/2
111-175	2 1/2	2
111-176	3	2
111-177	3 1/2	2 1/8
111-178	4	2 1/4
111-179	4 1/2	2 1/2
111-180	5	2 5/8
111-181	6	2 5/8