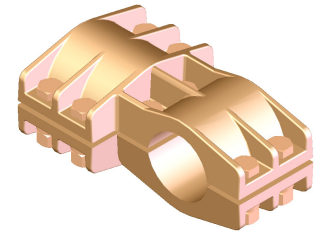
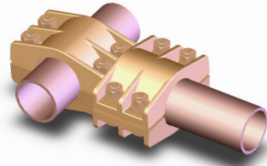


BRONZE TEE CONNECTORS, PIPE RUN TO PIPE TAP

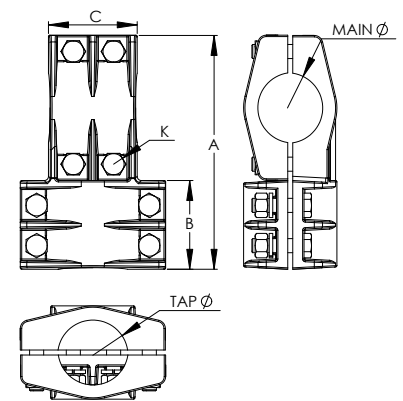
SECTION

12-1



BRONZE TEE CONNECTORS, PIPE RUN TO PIPE TAP

CATALOG NUMBER	IPS MAIN	IPS TAP	DIMENSIONS IN INCHES			
			A	B	C	K
12-101	1/2	1/2	4	3	3	3/8
12-102	3/4	1/2	4	3	2 3/4	1/2 & 3/8
12-103	3/4	3/4	4 3/8	2 3/4	2 3/4	1/2
12-104	1	1/2	4 1/2	3	3 3/16	1/2 & 3/8
12-105	1	3/4	4 5/8	2 3/4	3 3/16	1/2
12-106	1	1	7 1/4	3 3/16	3 3/16	1/2
12-107	1 1/4	1/2	7 1/2	3	3 1/8	1/2 & 3/8
12-108	1 1/4	3/4	7 1/4	2 3/4	3 1/8	1/2
12-109	1 1/4	1	7 3/8	3 3/16	3 1/8	1/2
12-110	1 1/4	1 1/4	7 5/8	3 1/8	3 1/8	1/2
12-111	1 1/2	1/2	7 3/8	3	3 1/16	1/2 & 3/8
12-112	1 1/2	3/4	7 3/4	2 3/4	3 1/16	1/2
12-113	1 1/2	1	5 5/8	3 3/16	3 1/16	1/2
12-114	1 1/2	1 1/4	7 3/4	3 1/8	3 1/16	1/2
12-115	1 1/2	1 1/2	7 3/4	3 1/16	3 1/16	1/2
12-116	2	1/2	7 1/8	3	3 1/8	1/2 & 3/8
12-117	2	3/4	5 3/4	2 3/4	3 1/8	1/2
12-118	2	1	8 1/2	3 3/16	3 1/8	1/2
12-119	2	1 1/4	8 5/8	3 1/8	3 1/8	1/2
12-120	2	1 1/2	8 7/8	3 1/16	3 1/8	1/2
12-121	2	2	8 1/4	3 1/8	3 1/8	1/2
12-122	2 1/2	1/2	9	3	4	5/8 & 3/8
12-123	2 1/2	3/4	9	2 3/4	4	5/8 & 1/2
12-124	2 1/2	1	9 1/2	3 3/16	4	5/8 & 1/2
12-125	2 1/2	1 1/4	10 3/8	3 1/8	4	5/8 & 1/2
12-126	2 1/2	1 1/2	6 3/4	3 1/16	4	5/8 & 1/2
12-127	2 1/2	2	9 5/8	3 1/8	4	5/8 & 1/2
12-128	2 1/2	2 1/2	7	4 5/8	4	5/8
12-129	3	1/2	9 3/4	3	3 15/16	5/8 & 3/8
12-130	3	3/4	9 3/4	2 3/4	3 15/16	5/8 & 1/2
12-131	3	1	10 1/8	3 3/16	3 15/16	5/8 & 1/2
12-132	3	1 1/4	10 3/8	3 1/8	3 15/16	5/8 & 1/2
12-133	3	1 1/2	10 1/4	3 1/16	3 15/16	5/8 & 1/2
12-134	3	2	10 1/2	3 1/8	3 15/16	5/8 & 1/2
12-135	3	2 1/2	11 1/2	4	3 15/16	5/8
12-136	3	3	11 3/8	3 15/16	3 15/16	5/8



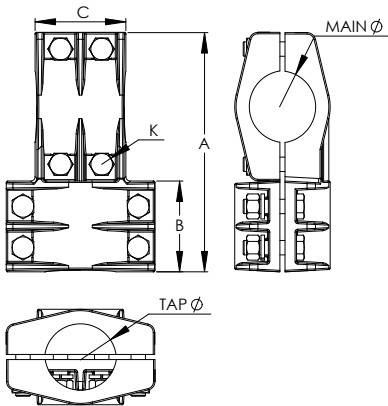
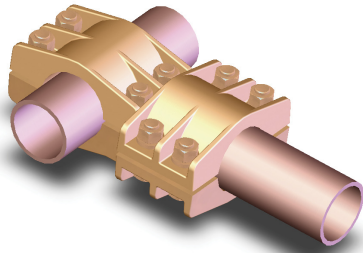
Made of a copper alloy for high conductivity and natural resistance to corrosion and stress, the Type PTP connector joins a pipe tap to the main. Bolts, nuts, and lockwashers are silicon bronze for clamping strength and resistance to corrosion. All bolt heads are recessed for single-wrench installation.

Continued on next page

SECTION

12-1

**BRONZE TEE CONNECTORS,
PIPE RUN TO PIPE TAP, continued**



CATALOG NUMBER	IPS MAIN	IPS TAP	DIMENSIONS IN INCHES			
			A	B	C	K
12-137	3 1/2	1/2	10 1/4	3	3 3/4	5/8 & 3/8
12-138	3 1/2	3/4	10 1/4	2 3/4	3 3/4	5/8 & 1/2
12-139	3 1/2	1	11 1/8	3 3/16	3 3/4	5/8 & 1/2
12-140	3 1/2	1 1/4	11 1/8	3 1/16	3 3/4	5/8 & 1/2
12-141	3 1/2	1 1/2	11 1/8	3 1/8	3 3/4	5/8 & 1/2
12-142	3 1/2	2	11 1/8	3 1/8	3 3/4	5/8 & 1/2
12-143	3 1/2	2 1/2	11 5/8	4	3 3/4	5/8
12-144	3 1/2	3	11 5/8	3 15/16	3 3/4	5/8
12-145	3 1/2	3 1/2	11 5/8	3 3/4	3 3/4	5/8
12-146	4	1/2	11 1/2	3	4 5/8	5/8 & 3/8
12-147	4	3/4	11 1/2	2 3/4	4 5/8	5/8 & 1/2
12-148	4	1	11 7/8	3 3/16	4 5/8	5/8 & 1/2
12-149	4	1 1/4	12 1/8	3 1/8	4 5/8	5/8 & 1/2
12-150	4	1 1/2	12 1/8	3 1/16	4 5/8	5/8 & 1/2
12-151	4	2	12 1/8	3 1/8	4 5/8	5/8 & 1/2
12-152	4	2 1/2	12 1/8	4	4 5/8	5/8
12-153	4	3	13	3 15/16	4 5/8	5/8
12-154	4	3 1/2	13 5/8	3 3/4	4 5/8	5/8
12-155	4	4	13 5/8	4 5/8	4 5/8	5/8
12-156	4 1/2	1/2	12	3	4 3/4	5/8 & 3/8
12-157	4 1/2	3/4	12	2 3/4	4 3/4	5/8 & 1/2
12-158	4 1/2	1	12 3/4	3 3/16	4 3/4	5/8 & 1/2
12-159	4 1/2	1 1/4	12 3/4	3 1/8	4 3/4	5/8 & 1/2
12-160	4 1/2	1 1/2	12 3/4	3 1/16	4 3/4	5/8 & 1/2
12-161	4 1/2	2	12 5/8	3 1/8	4 3/4	5/8 & 1/2
12-162	4 1/2	2 1/2	13 5/8	4	4 3/4	5/8
12-163	4 1/2	3	13 1/2	3 15/16	4 3/4	5/8
12-164	4 1/2	3 1/2	14 1/4	3 3/4	4 3/4	5/8
12-165	4 1/2	4	14 1/4	4 5/8	4 3/4	5/8
12-166	4 1/2	4 1/2	14 1/4	4 3/4	4 3/4	5/8
12-167	5	1/2	12 1/2	3	5 1/16	5/8 & 3/8
12-168	5	3/4	12 1/2	2 3/4	5 1/16	5/8 & 1/2
12-169	5	1	12 3/4	3 3/16	5 1/16	5/8 & 1/2
12-170	5	1 1/4	12 3/4	3 1/8	5 1/16	5/8 & 1/2
12-171	5	1 1/2	12 3/4	3 1/16	5 1/16	5/8 & 1/2
12-172	5	2	13 1/4	3 1/8	5 1/16	5/8 & 1/2
12-173	5	2 1/2	14	4	5 1/16	5/8
12-174	5	3	14	3 15/16	5 1/16	5/8
12-175	5	3 1/2	13 3/4	3 3/4	5 1/16	5/8
12-176	5	4	14 1/4	4 5/8	5 1/16	5/8
12-177	5	4 1/2	15 1/8	4 3/4	5 1/16	5/8
12-178	5	5	15 1/8	5 1/16	5 1/16	5/8
12-179	6	1/2	13 3/4	3	6	5/8 & 3/8
12-180	6	3/4	13 3/4	2 3/4	6	5/8 & 1/2
12-181	6	1	14 1/4	3 3/16	6	5/8 & 1/2
12-182	6	1 1/4	14 1/4	3 1/8	6	5/8 & 1/2
12-183	6	1 1/2	14 1/4	3 1/16	6	5/8 & 1/2
12-184	6	2	14 1/4	3 1/8	6	5/8 & 1/2
12-185	6	2 1/2	15 1/8	4	6	5/8
12-186	6	3	15 5/8	3 15/16	6	5/8
12-187	6	3 1/2	15 5/8	3 3/4	6	5/8
12-188	6	4	15 3/4	4 5/8	6	5/8
12-189	6	4 1/2	15 7/8	4 3/4	6	5/8
12-190	6	5	16 1/8	5 1/16	6	5/8
12-191	6	6	17 5/8	6	6	5/8