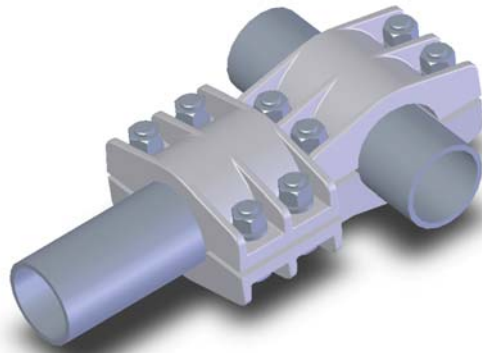


ALUMINUM TEE CONNECTORS, PIPE RUN TO PIPE TAP

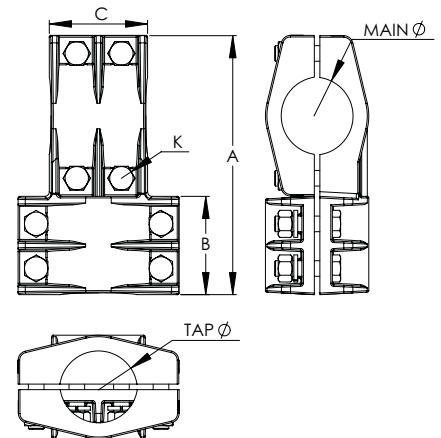
SECTION

12-1A



ALUMINUM TEE CONNECTORS
PIPE RUN TO PIPE TAP

CATALOG NUMBER	IPS MAIN	IPS TAP	DIMENSIONS IN INCHES			
			A	B	C	K
12-192	1/2	1/2	5 7/8	2 1/2	2 1/2	1/2
12-193	3/4	1/2	5 7/8	2 1/2	2 7/8	1/2
12-194	3/4	3/4	6 1/4	2 7/8	2 7/8	1/2
12-195	1	1/2	6 3/8	2 1/2	3 1/8	1/2
12-196	1	3/4	6 1/2	2 7/8	3 1/8	1/2
12-197	1	1	7	3 1/8	3 1/8	1/2
12-198	1 1/4	1/2	6 7/8	2 1/2	3 1/8	1/2
12-199	1 1/4	3/4	7	2 7/8	3 1/8	1/2
12-200	1 1/4	1	7 1/2	3 1/8	3 1/8	1/2
12-201	1 1/4	1 1/4	7 1/2	3 1/8	3 1/8	1/2
12-202	1 1/2	1/2	6 7/8	2 1/2	3 1/4	1/2
12-203	1 1/2	3/4	7	2 7/8	3 1/4	1/2
12-204	1 1/2	1	7 1/2	3 1/8	3 1/4	1/2
12-205	1 1/2	1 1/4	7 1/2	3 1/8	3 1/4	1/2
12-206	1 1/2	1 1/2	7 5/8	3 1/4	3 1/4	1/2
12-207	2	1/2	7 3/8	3 1/2	3 1/4	1/2
12-208	2	3/4	8	2 7/8	3 1/4	1/2
12-209	2	1	8 1/4	3 1/8	3 1/4	1/2
12-210	2	1 1/4	8 1/4	3 1/8	3 1/4	1/2
12-211	2	1 1/2	8 3/8	3 1/4	3 1/4	1/2
12-212	2	2	8 3/8	3 1/4	3 1/4	1/2
12-213	2 1/2	1/2	8 5/8	2 1/2	3 7/8	1/2
12-214	2 1/2	3/4	9	2 7/8	3 7/8	1/2
12-215	2 1/2	1	9 1/4	3 1/8	3 7/8	1/2
12-216	2 1/2	1 1/4	9 1/4	3 1/8	3 7/8	1/2
12-217	2 1/2	1 1/2	9 3/8	3 1/4	3 7/8	1/2
12-218	2 1/2	2	9 3/8	3 1/4	3 7/8	1/2
12-219	2 1/2	2 1/2	10	3 7/8	3 7/8	5/8
12-220	3	1/2	9 1/2	2 1/2	4	1/2
12-221	3	3/4	9 7/8	2 7/8	4	1/2
12-222	3	1	10 1/8	3 1/8	4	1/2
12-223	3	1 1/4	10 1/8	3 1/8	4	1/2
12-224	3	1 1/2	10 1/4	3 1/4	4	1/2
12-225	3	2	10 1/4	3 1/4	4	1/2
12-226	3	2 1/2	10 7/8	3 7/8	4	5/8
12-227	3	3	11	4	4	5/8

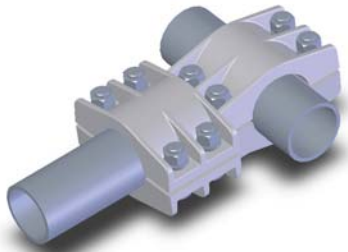


Where circumstances require a pipe connector of lightweight aluminum alloy, the Type APTP meets the most strenuous electrical and mechanical demands. Clamping hardware is high tensile aluminum. In order to facilitate single-wrench installation, all bolt heads are recessed.

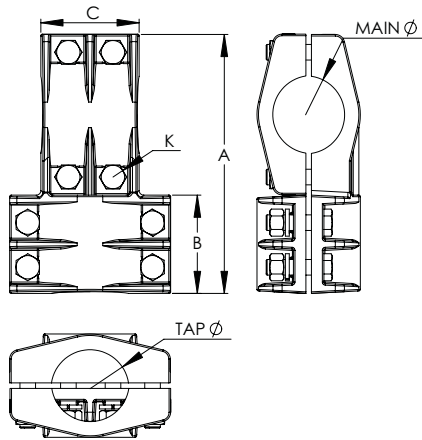
Continued on next page

SECTION

12-1A

ALUMINUM TEE CONNECTORS,
PIPE RUN TO PIPE TAP

Continued from previous page



CATALOG NUMBER	IPS MAIN	IPS TAP	A	DIMENSIONS IN INCHES		
				B	C	K
12-228	3 1/2	1/2	10	2 1/2	3 3/4	3/8
12-229	3 1/2	3/4	10 1/4	2 7/8	3 3/4	3/8
12-230	3 1/2	1	10 5/8	3 1/8	3 3/4	3/8
12-231	3 1/2	1 1/4	10 5/8	3 1/8	3 3/4	1/2
12-232	3 1/2	1 1/2	10 3/4	3 1/4	3 3/4	1/2
12-233	3 1/2	2	10 3/4	3 1/4	3 3/4	5/8
12-234	3 1/2	2 1/2	11 3/8	3 7/8	3 3/4	1/2
12-235	3 1/2	3	11 1/2	4	3 3/4	5/8
12-236	3 1/2	3 1/2	11 1/4	3 3/4	3 3/4	5/8
12-237	4	1/2	11	2 1/2	4 5/8	3/8
12-238	4	3/4	11 1/4	2 7/8	4 5/8	3/8
12-239	4	1	11 3/8	3 1/8	4 5/8	3/8
12-240	4	1 1/4	11 3/8	3 1/8	4 5/8	1/2
12-241	4	1 1/2	11 3/4	3 1/4	4 5/8	5/8
12-242	4	2	11 3/4	3 1/4	4 5/8	1/2
12-243	4	2 1/2	12 1/4	3 7/8	4 5/8	1/2
12-244	4	3	12 1/2	4	4 5/8	5/8
12-245	4	3 1/2	12 1/4	3 3/4	4 5/8	5/8
12-246	4	4	13 1/8	4 5/8	4 5/8	5/8
12-247	4 1/2	1/2	11 1/2	2 1/2	4 7/8	3/8
12-248	4 1/2	3/4	11 7/8	2 7/8	4 7/8	3/8
12-249	4 1/2	1	12 1/8	3 1/8	4 7/8	3/8
12-250	4 1/2	1 1/4	12 1/8	3 1/8	4 7/8	1/2
12-251	4 1/2	1 1/2	12 1/4	3 1/4	4 7/8	1/2
12-252	4 1/2	2	12 1/4	3 1/4	4 7/8	1/2
12-253	4 1/2	2 1/2	12 7/8	3 7/8	4 7/8	1/2
12-254	4 1/2	3	13	4	4 7/8	5/8
12-255	4 1/2	3 1/2	12 3/4	3 3/4	4 7/8	5/8
12-256	4 1/2	4	13 5/8	4 5/8	4 7/8	5/8
12-257	4 1/2	4 1/2	13 7/8	4 7/8	4 7/8	5/8
12-258	5	1/2	12 1/8	2 1/2	5	3/8
12-259	5	3/4	12 1/2	2 7/8	5	3/8
12-260	5	1	12 3/4	3 1/8	5	3/8
12-261	5	1 1/4	12 3/4	3 1/8	5	1/2
12-262	5	1 1/2	12 7/8	3 1/4	5	1/2
12-263	5	2	12 7/8	3 1/4	5	5/8
12-264	5	2 1/2	13 1/2	3 7/8	5	1/2
12-265	5	3	13 5/8	4	5	5/8
12-266	5	3 1/2	13 3/8	3 3/4	5	5/8
12-267	5	4	14 1/4	4 5/8	5	5/8
12-268	5	4 1/2	14 1/2	4 7/8	5	5/8
12-269	5	5	14 5/8	5	5	5/8
12-270	6	1/2	13 1/2	2 1/2	6	3/8
12-271	6	3/4	13 7/8	2 7/8	6	3/8
12-272	6	1	14 1/8	3 1/8	6	3/8
12-273	6	1 1/4	14 1/8	3 1/8	6	1/2
12-274	6	1 1/2	14 1/4	3 1/4	6	1/2
12-275	6	2	14 1/4	3 1/4	6	1/2
12-276	6	2 1/2	14 7/8	3 7/8	6	1/2
12-277	6	3	15	4	6	5/8
12-278	6	3 1/2	14 3/4	3 3/4	6	5/8
12-279	6	4	15 5/8	4 5/8	6	5/8
12-280	6	4 1/2	15 7/8	4 7/8	6	5/8
12-281	6	5	16	5	6	5/8
12-282	6	6	17	6	6	5/8