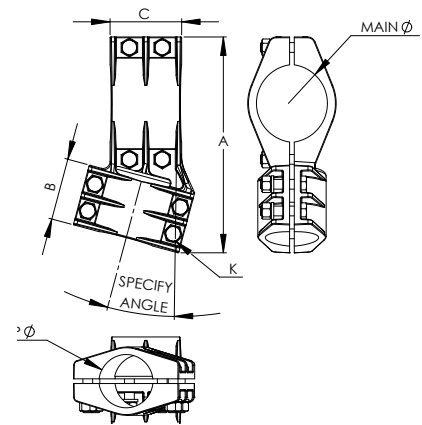
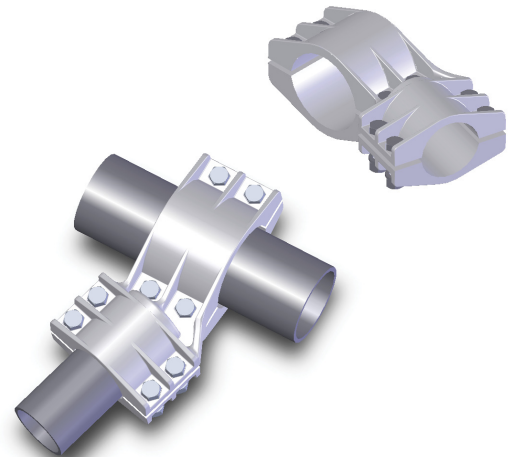


ALUMINUM TEE CONNECTORS, PIPE RUN TO ANGLE PIPE TAP

SECTION

12-2A

CATALOG NUMBER	IPS MAIN	IPS TAP	DIMENSIONS IN INCHES			
			A	B	C	K
12-374-(*)	1/2	1/2	7	4	4	1/2
12-375-(*)	3/4	1/2	7	2 7/8	2 3/4	1/2
12-376-(*)	3/4	3/4	7	2 3/4	2 3/4	1/2
12-377-(*)	1	1/2	8 1/8	4	3 3/16	1/2
12-378-(*)	1	3/4	8 1/8	2 3/4	3 3/16	1/2
12-379-(*)	1	1	8 1/8	3 3/16	3 3/16	1/2
12-380-(*)	1 1/4	1/2	8 1/8	4	3 1/8	1/2
12-381-(*)	1 1/4	3/4	8 1/8	2 3/4	3 1/8	1/2
12-382-(*)	1 1/4	1	8 1/2	3 3/16	3 1/8	1/2
12-383-(*)	1 1/4	1 1/4	8 3/4	3 1/8	3 1/8	1/2
12-384-(*)	1 1/2	1/2	8	4	3 1/16	1/2
12-385-(*)	1 1/2	3/4	9	2 3/4	3 1/16	1/2
12-386-(*)	1 1/2	1	8 3/4	3 3/16	3 1/16	1/2
12-387-(*)	1 1/2	1 1/4	8 1/2	3 1/8	3 1/16	1/2
12-388-(*)	1 1/2	1 1/2	8 1/2	3 1/16	3 1/16	1/2
12-389-(*)	2	1/2	8 3/8	4	3 1/8	1/2
12-390-(*)	2	3/4	8 5/8	2 3/4	3 1/8	1/2
12-391-(*)	2	1	9 1/2	3 3/16	3 1/8	1/2
12-392-(*)	2	1 1/4	9 5/8	3 1/8	3 1/8	1/2
12-393-(*)	2	1 1/2	9 3/4	3 1/16	3 1/8	1/2
12-394-(*)	2	2	10	3 1/8	3 1/8	1/2
12-395-(*)	2 1/2	1/2	9 3/4	4	4	5/8 & 1/2
12-396-(*)	2 1/2	3/4	9 3/4	2 3/4	4	5/8 & 1/2
12-397-(*)	2 1/2	1	11 1/8	3 3/16	4	5/8 & 1/2
12-398-(*)	2 1/2	1 1/4	11 1/8	3 1/8	4	5/8 & 1/2
12-399-(*)	2 1/2	1 1/2	11 1/8	3 1/16	4	5/8 & 1/2
12-400-(*)	2 1/2	2	11 1/8	3 1/8	4	5/8 & 1/2
12-401-(*)	2 1/2	2 1/2	11 1/2	4	4	5/8
12-402-(*)	3	1/2	10	4	3 15/16	5/8 & 1/2
12-403-(*)	3	3/4	10	2 3/4	3 15/16	5/8 & 1/2
12-404-(*)	3	1	10 3/4	3 3/16	3 15/16	5/8 & 1/2
12-405-(*)	3	1 1/4	11 3/4	3 1/8	3 15/16	5/8 & 1/2
12-406-(*)	3	1 1/2	11 1/2	3 1/16	3 15/16	5/8 & 1/2
12-407-(*)	3	2	11 1/2	3 1/8	3 15/16	5/8 & 1/2
12-408-(*)	3	2 1/2	11 5/8	4	3 15/16	5/8
12-409-(*)	3	3	13 1/4	3 15/16	3 15/16	5/8
12-410-(*)	3 1/2	1/2	11 1/8	4	3 3/4	5/8 & 1/2
12-411-(*)	3 1/2	3/4	11 1/8	2 3/4	3 3/4	5/8 & 1/2
12-412-(*)	3 1/2	1	11 3/4	3 3/16	3 3/4	5/8 & 1/2
12-413-(*)	3 1/2	1 1/4	11 3/4	3 1/8	3 3/4	5/8 & 1/2
12-414-(*)	3 1/2	1 1/2	12	3 1/16	3 3/4	5/8 & 1/2
12-415-(*)	3 1/2	2	12 1/4	3 1/8	3 3/4	5/8 & 1/2
12-416-(*)	3 1/2	2 1/2	13	4	3 3/4	5/8
12-417-(*)	3 1/2	3	13	3 15/16	3 3/4	5/8
12-418-(*)	3 1/2	3 1/2	13 1/4	3 3/4	3 3/4	5/8



Cast of lightweight aluminum alloy, the type APTA adapts to situations requiring the junction of a tubular main to a tap whose angle varies from the perpendicular. All clamping hardware is made of high tensile aluminum. To facilitate installation, bolt heads are recessed.

*In ordering the type APTA tee connector, the varying angle must be written as a suffix after the catalog number.

A 15° angle tap for catalog number 12-374, for example, should appear as 12-374-15.

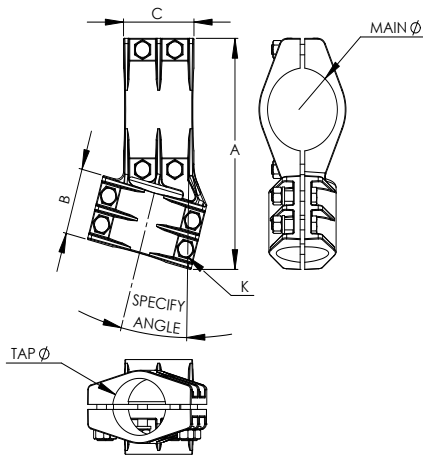
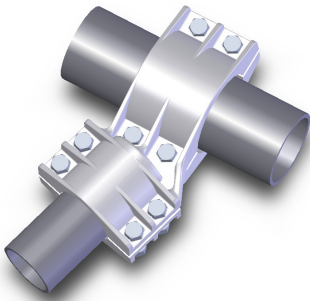
Continued on next page

SECTION

12-2A

ALUMINUM TEE CONNECTORS PIPE
RUN TO ANGLE PIPE TAP, continued

Continued from previous page



*In ordering the type APTA tee connector, the varying angle must be written as a suffix after the catalog number. A 15° angle tap for catalog number 12-419, for example, should appear as 12-419-15.

CATALOG NUMBER	IPS MAIN	IPS TAP	DIMENSIONS IN INCHES			
			A	B	C	K
12-419-(*)	4	1/2	12 1/4	4	4 5/8	5/8 & 1/2
12-420-(*)	4	3/4	12 1/4	2 3/4	4 5/8	5/8 & 1/2
12-421-(*)	4	1	13	3 3/16	4 5/8	5/8 & 1/2
12-422-(*)	4	1 1/4	13	3 1/8	4 5/8	5/8 & 1/2
12-423-(*)	4	1 1/2	13	3 1/16	4 5/8	5/8 & 1/2
12-424-(*)	4	2	13 1/4	3 1/8	4 5/8	5/8 & 1/2
12-425-(*)	4	2 1/2	14	4	4 5/8	5/8
12-426-(*)	4	3	14 1/4	3 15/16	4 5/8	5/8
12-427-(*)	4	3 1/2	13 1/4	3 3/4	4 5/8	5/8
12-428-(*)	4	4	15 7/8	4 5/8	4 5/8	5/8
12-429-(*)	4 1/2	1/2	12 7/8	4	4 3/4	5/8 & 1/2
12-430-(*)	4 1/2	3/4	12 7/8	2 3/4	4 3/4	5/8 & 1/2
12-431-(*)	4 1/2	1	13	3 3/16	4 3/4	5/8 & 1/2
12-432-(*)	4 1/2	1 1/4	13	3 1/8	4 3/4	5/8 & 1/2
12-433-(*)	4 1/2	1 1/2	13	3 1/16	4 3/4	5/8 & 1/2
12-434-(*)	4 1/2	2	14 3/8	3 1/8	4 3/4	5/8 & 1/2
12-435-(*)	4 1/2	2 1/2	14	4	4 3/4	5/8
12-436-(*)	4 1/2	3	14	3 15/16	4 3/4	5/8
12-437-(*)	4 1/2	3 1/2	14	3 3/4	4 3/4	5/8
12-438-(*)	4 1/2	4	15 1/8	4 5/8	4 3/4	5/8
12-439-(*)	4 1/2	4 1/2	15 1/8	4 3/4	4 3/4	5/8
12-440-(*)	5	1/2	13 1/4	4	5 1/16	5/8 & 1/2
12-441-(*)	5	3/4	13 1/4	2 3/4	5 1/16	5/8 & 1/2
12-442-(*)	5	1	13 3/4	3 3/16	5 1/16	5/8 & 1/2
12-443-(*)	5	1 1/4	13 3/4	3 1/8	5 1/16	5/8 & 1/2
12-444-(*)	5	1 1/2	14 1/4	3 1/16	5 1/16	5/8 & 1/2
12-445-(*)	5	2	14 5/8	3 1/8	5 1/16	5/8 & 1/2
12-446-(*)	5	2 1/2	15 3/8	4	5 1/16	5/8
12-447-(*)	5	3	15 1/2	3 15/16	5 1/16	5/8
12-448-(*)	5	3 1/2	15	3 3/4	5 1/16	5/8
12-449-(*)	5	4	16	4 5/8	5 1/16	5/8
12-450-(*)	5	4 1/2	16	4 3/4	5 1/16	5/8
12-451-(*)	5	5	16 1/4	5 1/16	5 1/16	5/8
12-452-(*)	6	1/2	14 3/4	4	6	5/8 & 1/2
12-453-(*)	6	3/4	14 3/4	2 3/4	6	5/8 & 1/2
12-454-(*)	6	1	15 1/4	3 3/16	6	5/8 & 1/2
12-455-(*)	6	1 1/4	15 1/4	3 1/8	6	5/8 & 1/2
12-456-(*)	6	1 1/2	15 1/4	3 1/16	6	5/8 & 1/2
12-457-(*)	6	2	15 1/4	3 1/8	6	5/8 & 1/2
12-458-(*)	6	2 1/2	16 1/2	4	6	5/8
12-459-(*)	6	3	16 1/2	3 15/16	6	5/8
12-460-(*)	6	3 1/2	16 5/8	3 3/4	6	5/8
12-461-(*)	6	4	17 1/2	4 5/8	6	5/8
12-462-(*)	6	4 1/2	17 5/8	4 3/4	6	5/8
12-463-(*)	6	5	18	5 1/16	6	5/8
12-464-(*)	6	6	19	6	6	5/8