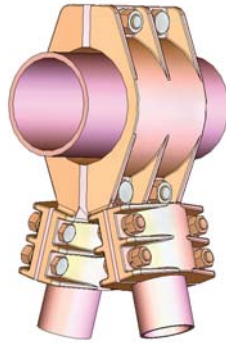


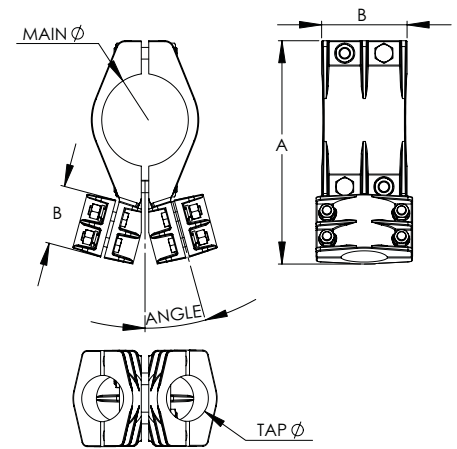
# BRONZE TEE CONNECTORS, PIPE RUN TO DOUBLE PIPE TAP

SECTION

12-3



BRONZE TEE CONNECTORS PIPE RUN TO DOUBLE PIPE TAP						
CATALOG NUMBER	IPS MAIN	IPS TAP	DIMENSIONS IN INCHES			
			A	B	C	K
12-465	1/2	1/2	5 3/4	2 1/2	2 1/2	3/8
12-466	3/4	1/2	5 3/4	2 1/2	2 7/8	3/8
12-467	3/4	3/4	6 1/8	2 7/8	2 7/8	3/8
12-468	1	1/2	6 1/4	2 1/2	3 1/8	3/8
12-469	1	3/4	6 5/8	2 7/8	3 1/8	3/8
12-470	1	1	6 7/8	3 1/8	3 1/8	3/8
12-470	1 1/4	1/2	6 3/4	2 1/2	3 1/8	3/8
12-472	1 1/4	3/4	7 1/8	2 7/8	3 1/8	3/8
12-473	1 1/4	1	7 3/8	3 1/8	3 1/8	3/8
12-474	1 1/4	1 1/4	7 3/8	3 1/8	3 1/8	1/2
12-475	1 1/2	1/2	6 3/4	2 1/2	3 1/4	3/8
12-476	1 1/2	3/4	7 1/8	2 7/8	3 1/4	3/8
12-477	1 1/2	1	7 1/4	3 1/8	3 1/4	3/8
12-478	1 1/2	1 1/4	7	3 1/8	3 1/4	1/2
12-479	1 1/2	1 1/2	7 1/2	3 1/4	3 1/4	1/2
12-480	2	1/2	7 1/2	2 1/2	3 1/4	3/8
12-481	2	3/4	7 7/8	2 7/8	3 1/4	3/8
12-482	2	1	8 1/8	3 1/8	3 1/4	3/8
12-483	2	1 1/4	8 1/8	3 1/8	3 1/4	1/2
12-484	2	1 1/2	8 1/4	3 1/4	3 1/4	1/2
12-485	2	2	8 1/4	3 1/4	3 1/4	1/2
12-486	2 1/2	1/2	8 1/8	2 1/2	3 7/8	3/8
12-487	2 1/2	3/4	8 7/8	2 7/8	3 7/8	3/8
12-488	2 1/2	1	9 1/8	3 1/8	3 7/8	3/8
12-489	2 1/2	1 1/4	9 1/8	3 1/8	3 7/8	1/2
12-490	2 1/2	1 1/2	9 1/4	3 1/4	3 7/8	1/2
12-491	2 1/2	2	9 1/4	3 1/4	3 7/8	1/2
12-492	2 1/2	2 1/2	9 7/8	3 7/8	3 7/8	1/2
12-493	3	1/2	9 1/4	2 1/2	4	3/8
12-494	3	3/4	9 3/4	2 7/8	4	3/8
12-495	3	1	10	3 1/8	4	3/8
12-496	3	1 1/4	10	3 1/8	4	1/2
12-497	3	1 1/2	10 1/8	3 1/4	4	1/2
12-498	3	2	10 1/8	3 1/4	4	1/2
12-499	3	2 1/2	10 3/4	3	4	1/2
12-500	3	3	10 7/8	4	4	5/8



An efficient connector for joining two taps to a single main, the Type PTV utilizes a high conductivity copper alloy. The silicon bronze clamping hardware increases clamping strength and resists corrosion. For single-wrench installation, all bolt heads are captivated.

Orders for this type of tee connector require the addition of a suffix to the catalog number for denoting the varying angle between taps. If the angle varies 15° from the perpendicular, for example, and the number being requested is 12-465, it should appear on the order as 12-465-15.

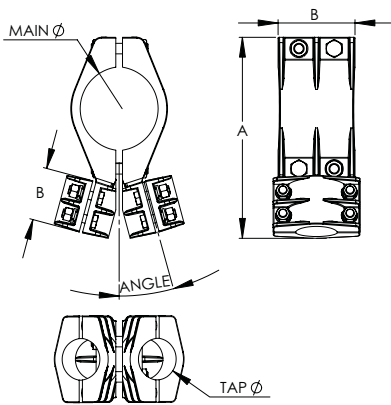
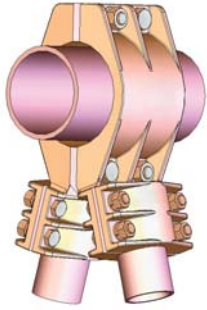
Continued on next page

## SECTION

## 12-3

BRONZE TEE CONNECTORS,  
PIPE RUN TO DOUBLE PIPE TAP

Continued from previous page



Orders for this type of tee connector require the addition of a suffix to the catalog number for denoting the varying angle between taps. If the angle varies 15° from the perpendicular, for example, and the number being requested is 12-501, it should appear on the order as 12-501-15.

BRONZE TEE CONNECTORS  
PIPE RUN TO DOUBLE PIPE TAP

CATALOG NUMBER	IPS MAIN	IPS TAP	A	DIMENSIONS IN INCHES		
				B	C	K
12-501	3 1/2	1/2	10	2 1/2	3 3/4	3/8
12-502	3 1/2	3/4	10 1/4	2 7/8	3 3/4	3/8
12-503	3 1/2	1	10 5/8	3 1/8	3 3/4	3/8
12-504	3 1/2	1 1/4	10 5/8	3 1/8	3 3/4	1/2
12-505	3 1/2	1 1/2	10 3/4	3 1/4	3 3/4	1/2
12-506	3 1/2	2	10 3/4	3 1/4	3 3/4	5/8
12-507	3 1/2	2 1/2	11 3/8	3 7/8	3 3/4	1/2
12-508	3 1/2	3	11 1/2	4	3 3/4	5/8
12-509	3 1/2	3 1/2	11 1/4	3 3/4	3 3/4	5/8
12-510	4	1/2	11	2 1/2	4 5/8	3/8
12-511	4	3/4	11 1/4	2 7/8	4 5/8	3/8
12-512	4	1	11 3/8	3 1/8	4 5/8	3/8
12-513	4	1 1/4	11 3/8	3 1/8	4 5/8	1/2
12-514	4	1 1/2	11 3/4	3 1/4	4 5/8	5/8
12-515	4	2	11 3/4	3 1/4	4 5/8	1/2
12-516	4	2 1/2	12 1/4	3 7/8	4 5/8	1/2
12-517	4	3	12 1/2	4	4 5/8	5/8
12-518	4	3 1/2	12 1/4	3 3/4	4 5/8	5/8
12-519	4	4	13 1/8	4 5/8	4 5/8	5/8
12-520	4 1/2	1/2	11 1/2	2 1/2	4 7/8	3/8
12-821	4 1/2	3/4	11 7/8	2 7/8	4 7/8	3/8
12-522	4 1/2	1	12 1/8	3 1/8	4 7/8	3/8
12-523	4 1/2	1 1/4	12 1/8	3 1/8	4 7/8	1/2
12-524	4 1/2	1 1/2	12 1/4	3 1/4	4 7/8	1/2
12-525	4 1/2	2	12 1/4	3 1/4	4 7/8	1/2
12-526	4 1/2	2 1/2	12 7/8	3 7/8	4 7/8	1/2
12-527	4 1/2	3	13	4	4 7/8	5/8
12-528	4 1/2	3 1/2	12 3/4	3 3/4	4 7/8	5/8
12-529	4 1/2	4	13 5/8	4 5/8	4 7/8	5/8
12-530	4 1/2	4 1/2	13 7/8	4 7/8	4 7/8	5/8
12-531	5	1/2	12 1/8	2 1/2	5	3/8
12-532	5	3/4	12 1/2	2 7/8	5	3/8
12-533	5	1	12 3/4	3 1/8	5	3/8
12-534	5	1 1/4	12 3/4	3 1/8	5	1/2
12-535	5	1 1/2	12 7/8	3 1/4	5	1/2
12-536	5	2	12 7/8	3 1/4	5	5/8
12-537	5	2 1/2	13 1/2	3 7/8	5	1/2
12-538	5	3	13 5/8	4	5	5/8
12-539	5	3 1/2	13 3/8	3 3/4	5	5/8
12-540	5	4	14 1/4	4 5/8	5	5/8
12-541	5	4 1/2	14 1/2	4 7/8	5	5/8
12-542	5	5	14 5/8	5	5	5/8
12-543	6	1/2	13 1/2	2 1/2	6	3/8
12-544	6	3/4	13 7/8	2 7/8	6	3/8
12-545	6	1	14 1/8	3 1/8	6	3/8
12-546	6	1 1/4	14 1/8	3 1/8	6	1/2
12-547	6	1 1/2	14 1/4	3 1/4	6	1/2
12-548	6	2	14 1/4	3 1/4	6	1/2
12-549	6	2 1/2	14 7/8	3 7/8	6	1/2
12-550	6	3	15	4	6	5/8
12-551	6	3 1/2	14 3/4	3 3/4	6	5/8
12-552	6	4	15 5/8	4 5/8	6	5/8
12-553	6	4 1/2	15 7/8	4 7/8	6	5/8
12-554	6	5	16	5	6	5/8
12-555	6	6	17	6	6	5/8