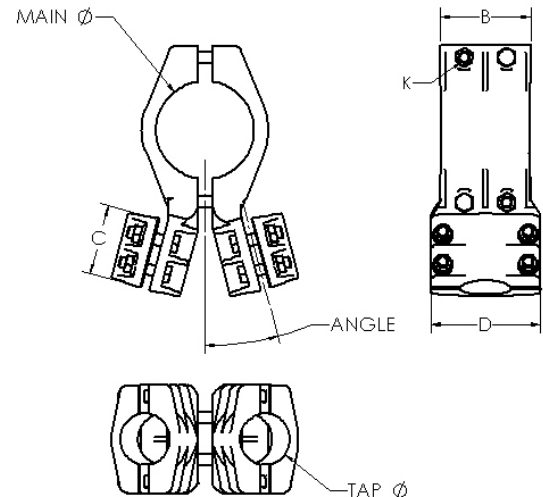
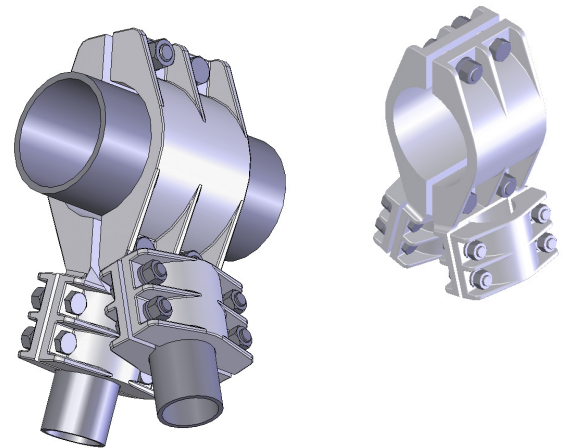


ALUMINUM VEE CONNECTORS, PIPE RUN TO DOUBLE PIPE TAP

SECTION

12-3A

CATALOG NUMBER	IPS MAIN	IPS TAP	DIMENSIONS IN INCHES			
			B	C	D	K
12-556-(*)	1/2	1/2	4	4	2 7/8	1/2
12-557-(*)	3/4	1/2	2 3/4	4	2 7/8	1/2
12-558-(*)	3/4	3/4	2 3/4	2 3/4	3 3/8	1/2
12-559-(*)	1	1/2	3 3/16	4	2 7/8	1/2
12-560-(*)	1	3/4	3 3/16	2 3/4	3 3/8	1/2
12-561-(*)	1	1	3 3/16	3 3/16	3 7/8	1/2
12-562-(*)	1 1/4	1/2	3 1/8	4	2 7/8	1/2
12-563-(*)	1 1/4	3/4	3 1/8	2 3/4	3 3/8	1/2
12-564-(*)	1 1/4	1	3 1/8	3 1/16	3 7/8	1/2
12-565-(*)	1 1/4	1 1/4	3 1/8	3 1/8	4 5/16	1/2
12-566-(*)	1 1/2	1/2	3 1/16	4	2 7/8	1/2
12-567-(*)	1 1/2	3/4	3 1/16	2 3/4	3 3/8	1/2
12-568-(*)	1 1/2	1	3 1/16	3 3/16	3 7/8	1/2
12-569-(*)	1 1/2	1 1/4	3 1/16	3 1/8	4 5/16	1/2
12-570-(*)	1 1/2	1 1/2	3 1/16	3 1/16	4 3/8	1/2
12-571-(*)	2	1/2	3 1/8	4	2 7/8	1/2
12-572-(*)	2	3/4	3 1/8	2 3/4	3 3/8	1/2
12-573-(*)	2	1	3 1/8	3 3/16	3 7/8	1/2
12-574-(*)	2	1 1/4	3 1/8	3 1/8	4 5/16	1/2
12-575-(*)	2	1 1/2	3 1/8	3 1/16	4 3/8	1/2
12-576-(*)	2	2	3 1/8	3 1/8	5 1/8	1/2
12-577-(*)	2 1/2	1/2	4	4	2 7/8	5/8 & 1/2
12-578-(*)	2 1/2	3/4	4	2 3/4	3 3/8	5/8 & 1/2
12-579-(*)	2 1/2	1	4	3 3/16	3 7/8	5/8 & 1/2
12-580-(*)	2 1/2	1 1/4	4	3 1/8	4 5/16	5/8 & 1/2
12-581-(*)	2 1/2	1 1/2	4	3 1/16	4 3/8	5/8 & 1/2
12-582-(*)	2 1/2	2	4	3 1/8	5 1/8	5/8 & 1/2
12-583-(*)	2 1/2	2 1/2	4	4	6 1/8	5/8
12-584-(*)	3	1/2	3 15/16	4	2 7/8	5/8 & 1/2
12-585-(*)	3	3/4	3 15/16	2 3/4	3 3/8	5/8 & 1/2
12-586-(*)	3	1	3 15/16	3 3/16	3 7/8	5/8 & 1/2
12-587-(*)	3	1 1/4	3 15/16	3 1/8	4 5/16	5/8 & 1/2
12-588-(*)	3	1 1/2	3 15/16	3 1/16	4 3/8	5/8 & 1/2
12-589-(*)	3	2	3 15/16	3 1/8	5 1/8	5/8 & 1/2
12-590-(*)	3	2 1/2	3 15/16	4	6 1/8	5/8
12-591-(*)	3	3	3 15/16	3 15/16	7	5/8
12-592-(*)	3 1/2	1/2	3 3/4	4	2 7/8	5/8 & 1/2
12-593-(*)	3 1/2	3/4	3 3/4	2 3/4	3 3/8	5/8 & 1/2
12-594-(*)	3 1/2	1	3 3/4	3 3/16	3 7/8	5/8 & 1/2
12-595-(*)	3 1/2	1 1/4	3 3/4	3 1/8	4 5/16	5/8 & 1/2
12-596-(*)	3 1/2	1 1/2	3 3/4	3 1/16	4 3/8	5/8 & 1/2
12-597-(*)	3 1/2	2	3 3/4	3 1/8	5 1/8	5/8 & 1/2
12-598-(*)	3 1/2	2 1/2	3 3/4	4	6 1/8	5/8
12-599-(*)	3 1/2	3	3 3/4	3 15/16	7	5/8
12-600-(*)	3 1/2	3 1/2	3 3/4	3 3/4	7 1/2	5/8



A strong, lightweight connector for joining two taps to a single main, the type APTV, which is cast of aluminum alloy, features clamping hardware made of high-tensile aluminum. All bolt heads are captivated.

Orders for this type of vee connector require the addition of a suffix to the catalog number that designates the proper angle of variation from the perpendicular.

*If the angle varies 15° from the perpendicular, for example, and the number being requested is 12-556, it should appear on the order as 12-556-15.

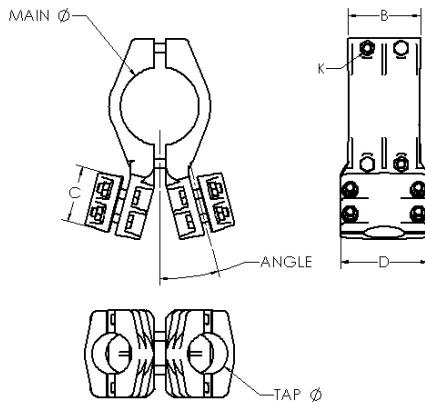
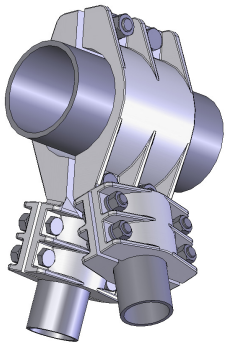
Continued on next page

SECTION

12-3A

**ALUMINUM VEE CONNECTORS, PIPE
RUN TO DOUBLE PIPE TAP, continued**

Continued from previous page



CATALOG NUMBER	IPS MAIN	IPS TAP	DIMENSIONS IN INCHES			
			B	C	D	K
12-601-(*)	4	1/2	4 5/8	4	2 7/8	5/8 & 1/2
12-602-(*)	4	3/4	4 5/8	2 3/4	3 3/8	5/8 & 1/2
12-603-(*)	4	1	4 5/8	3 3/16	3 7/8	5/8 & 1/2
12-604-(*)	4	1 1/4	4 5/8	3 1/8	4 5/16	5/8 & 1/2
12-605-(*)	4	1 1/2	4 5/8	3 1/16	4 3/8	5/8 & 1/2
12-606-(*)	4	2	4 5/8	3 1/8	5 1/8	5/8 & 1/2
12-607-(*)	4	2 1/2	4 5/8	4	6 1/8	5/8
12-608-(*)	4	3	4 5/8	3 15/16	7	5/8
12-609-(*)	4	3 1/2	4 5/8	3 3/4	7 1/2	5/8
12-610-(*)	4	4	4 5/8	4 5/8	8 1/2	5/8
12-611-(*)	4 1/2	1/2	4 3/4	4	2 7/8	5/8 & 1/2
12-612-(*)	4 1/2	3/4	4 3/4	2 3/4	3 3/8	5/8 & 1/2
12-613-(*)	4 1/2	1	4 3/4	3 3/16	3 7/8	5/8 & 1/2
12-614-(*)	4 1/2	1 1/4	4 3/4	3 1/8	4 5/16	5/8 & 1/2
12-615-(*)	4 1/2	1 1/2	4 3/4	3 1/16	4 3/8	5/8 & 1/2
12-616-(*)	4 1/2	2	4 3/4	3 1/8	5 1/8	5/8 & 1/2
12-617-(*)	4 1/2	2 1/2	4 3/4	4	6 1/8	5/8
12-618-(*)	4 1/2	3	4 3/4	3 15/16	7	5/8
12-619-(*)	4 1/2	3 1/2	4 3/4	3 3/4	7 1/2	5/8
12-620-(*)	4 1/2	4	4 3/4	4 5/8	8 1/2	5/8
12-621-(*)	4 1/2	4 1/2	4 3/4	4 3/4	9 1/8	5/8
12-622-(*)	5	1/2	5 1/16	4	2 7/8	5/8 & 1/2
12-623-(*)	5	3/4	5 1/16	2 3/4	3 3/8	5/8 & 1/2
12-624-(*)	5	1	5 1/16	3 3/16	3 7/8	5/8 & 1/2
12-625-(*)	5	1 1/4	5 1/16	3 1/8	4 5/16	5/8 & 1/2
12-626-(*)	5	1 1/2	5 1/16	3 1/16	4 3/8	5/8 & 1/2
12-627-(*)	5	2	5 1/16	3 1/8	5 1/8	5/8 & 1/2
12-628-(*)	5	2 1/2	5 1/16	4	6 1/8	5/8
12-629-(*)	5	3	5 1/16	3 15/16	7	5/8
12-630-(*)	5	3 1/2	5 1/16	3 3/4	7 1/2	5/8
12-631-(*)	5	4	5 1/16	4 5/8	8 1/2	5/8
12-632-(*)	5	4 1/2	5 1/16	4 3/4	9 1/8	5/8
12-633-(*)	5	5	5 1/16	5 1/16	9 5/8	5/8
12-634-(*)	6	1/2	6	4	2 7/8	5/8 & 1/2
12-635-(*)	6	3/4	6	2 3/4	3 3/8	5/8 & 1/2
12-636-(*)	6	1	6	3 3/16	3 7/8	5/8 & 1/2
12-637-(*)	6	1 1/4	6	3 1/8	4 5/16	5/8 & 1/2
12-638-(*)	6	1 1/2	6	3 1/16	4 3/8	5/8 & 1/2
12-639-(*)	6	2	6	3 1/8	5 1/8	5/8 & 1/2
12-640-(*)	6	2 1/2	6	4	6 1/8	5/8
12-641-(*)	6	3	6	3 15/16	7	5/8
12-642-(*)	6	3 1/2	6	3 3/4	7 1/2	5/8
12-643-(*)	6	4	6	4 5/8	8 1/2	5/8
12-644-(*)	6	4 1/2	6	4 3/4	9 1/8	5/8
12-645-(*)	6	5	6	5 1/16	9 5/8	5/8
12-646-(*)	6	6	6	6	11	5/8

Orders for this type of vee connector require the addition of a suffix to the catalog number that designates the proper angle of variation from the perpendicular.

*If the angle varies 15° from the perpendicular, for example, and the number being requested is 12-601, it should appear on the order as 12-601-15.