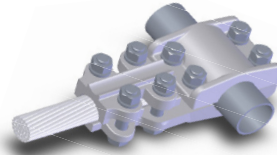
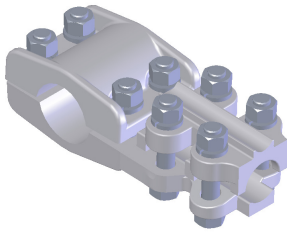


SECTION

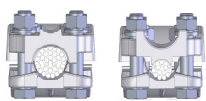
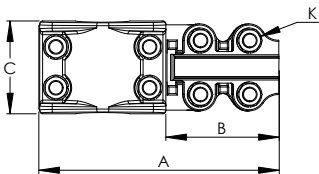
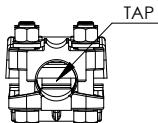
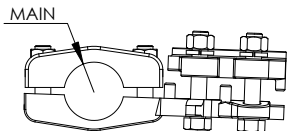
12-4A

**ALUMINUM TEE CONNECTORS,
PIPE RUN TO CABLE TAP**



When a more economical and lightweight connector is necessary for joining a cable tap to the pipe main, the type ATPC, which is made of an aluminum alloy, meets those requirements.

High tensile aluminum clamping hardware adds strength and durability to the connector which, for greater convenience, offers captivated bolt heads that permit single-wrench installation.



Wide Range denoted by: *

CATALOG NUMBER	IPS MAIN	ALUMINUM CABLE TAP		ACSR CABLE TAP		DIMENSIONS IN INCHES			
		AWG MIN	MCM MAX	AWG MIN	MCM MAX	A	B	C	K
12-699	1/2	4	954	4	795	6 7/8	4	4	1/2
12-703*	3/4	4	954	4	795	7 5/8	4	2 3/4	1/2
12-707*	1	4	954	4	795	8	4	3 3/16	1/2
12-711*	1 1/4	4	954	4	795	8 1/4	4	3 1/8	1/2
12-715*	1 1/2	4	954	4	795	8 5/8	4	3 1/16	1/2
12-716	1 1/2	900	1272	715.5	1113	8	4	3 1/16	1/2
12-719*	2	4	954	4	795	9 1/2	4	3 1/8	1/2
12-720	2	900	1272	715.5	1113	9 3/8	3 5/8	3 1/8	5/8
12-723*	2 1/2	4	954	4	795	10 1/8	4	4	5/8 & 1/2
12-724	2 1/2	900	1272	715.5	1113	10 1/2	3 5/8	4	5/8 & 1/2
12-725	2 1/2	1272	1590	1113	1272	11	4 1/4	4	5/8 & 1/2
12-728*	3	4	954	4	795	11 1/4	4	3 15/16	5/8 & 1/2
12-729*	3	900	1272	715.5	1113	11	3 5/8	3 15/16	5/8 & 1/2
12-730	3	1272	1590	1113	1272	11 3/4	4 1/4	3 15/16	5/8 & 1/2
12-733*	3 1/2	4	954	4	795	11 1/2	4	3 3/4	5/8 & 1/2
12-734	3 1/2	900	1272	715.5	1113	11 1/8	3 5/8	3 3/4	5/8 & 1/2
12-735	3 1/2	1272	1590	1113	1272	11 7/8	4 1/4	3 3/4	5/8 & 1/2
12-737*	4	4	954	4	795	12 1/2	4	4 5/8	5/8 & 1/2
12-738	4	900	1272	715.5	1113	12 1/2	3 5/8	4 5/8	5/8 & 1/2
12-739	4	1272	1590	1113	1272	12 3/4	4 1/4	4 5/8	5/8 & 1/2
12-740	4	1590	2000	1272	1590	13 1/2	4 1/2	4 5/8	5/8
12-742*	4 1/2	4	954	4	795	12 5/8	4	4 3/4	5/8 & 1/2
12-743	4 1/2	900	1272	715.5	1113	12 5/8	3 5/8	4 3/4	5/8 & 1/2
12-744	4 1/2	1272	1590	1113	1272	14 5/8	4 1/4	4 3/4	5/8 & 1/2
12-745	4 1/2	1590	2000	1272	1590	15 1/4	4 1/2	4 3/4	5/8
12-747*	5	4	954	4	795	13	4	5 1/16	5/8 & 1/2
12-748	5	900	1272	715.5	1113	13 3/4	3 5/8	5 1/16	5/8 & 1/2
12-749	5	1272	1590	1113	1272	14 5/8	4 1/4	5 1/16	5/8 & 1/2
12-750	5	1590	2000	1272	1590	14 1/2	4 1/2	5 1/16	5/8
12-752*	6	4	954	4	795	15 5/8	4	6	5/8 & 1/2
12-753	6	900	1272	715.5	1113	14 3/4	3 5/8	6	5/8 & 1/2
12-754	6	1272	1590	1113	1272	15 1/4	4 1/4	6	5/8 & 1/2
12-755	6	1590	2000	1272	1590	15 1/2	4 1/2	6	5/8