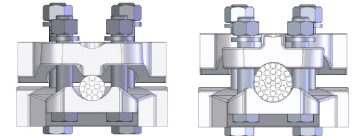
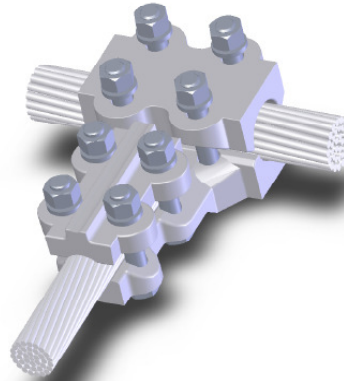
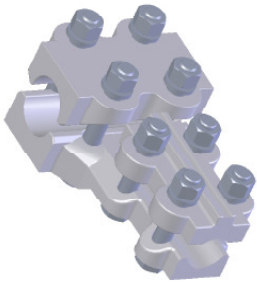


SECTION

12-6A

**ALUMINUM TEE CONNECTORS,
CABLE RUN TO CABLE TAP**



Wide Range denoted by: *

CATALOG NUMBER	ALUMINUM CABLE MAIN		ALUMINUM CABLE TAP		ACSR CABLE MAIN		ACSR CABLE TAP		DIMENSIONS IN INCHES			
	AWG MIN	MCM MAX	AWG MIN	MCM MAX	AWG MIN	MCM MAX	AWG MIN	MCM MAX	A	B	C	K
12-908*	4	954	4	954	4	795	4	795	6 7/8	4	2 7/8	1/2
12-915*	900	1272	4	954	715.5	1113	4	795	7 1/2	4	3 1/2	1/2
12-917	900	1272	900	1272	715.5	1113	715.5	1113	7 1/8	3 5/8	3 1/2	1/2
12-920*	1272	1590	4	954	1113	1272	4	795	7 3/8	4	3 3/8	1/2
12-922	1272	1590	900	1272	1113	1272	715.5	1113	7	3 5/8	3 3/8	1/2
12-923	1272	1590	1272	1590	1113	1272	1113	1272	7 5/8	4 1/4	3 3/8	1/2
12-926*	1590	2000	4	954	1272	1590	4	795	7 3/4	4	3 3/4	5/8 & 1/2
12-927	1590	2000	900	1272	1272	1590	715.5	1113	7 3/8	3 5/8	3 3/4	5/8 & 1/2
12-928	1590	2000	1272	1590	1272	1590	1113	1272	8	4 1/4	3 3/4	5/8 & 1/2
12-929	1590	2000	1590	2000	1272	1590	1272	1590	8 1/4	4 1/2	3 3/4	5/8

Connecting a cable tap to the cable main can be accomplished with efficiency and economy when the type ATTC is employed.

Cast of a lightweight aluminum alloy, it includes bolts, nuts, and lockwashers made of high tensile aluminum for clamping strength and resistance to wear.

To facilitate single-wrench installation, all bolt heads are caprivated.

