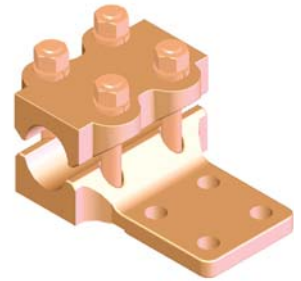
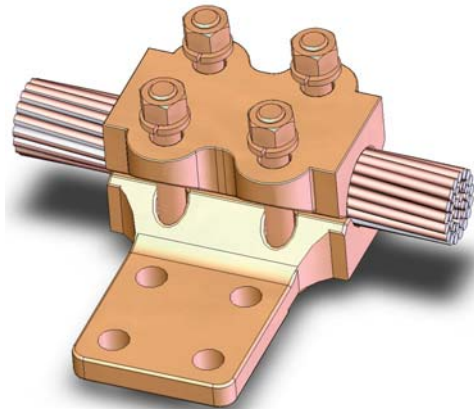


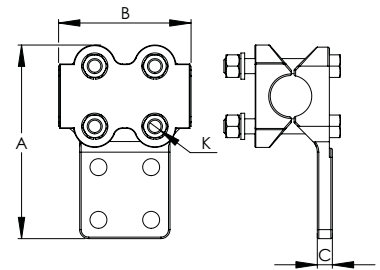
# BRONZE TEE CONNECTORS, CABLE RUN TO FLAT BAR TAP

SECTION

12-8



BRONZE TEE CONNECTORS CABLE RUN TO FLAT BAR TAP							
CATALOG NUMBER	CABLE RUN		PAD STYLE	DIMENSIONS IN INCHES			
	AWG MIN.	or MCM MAX.		A	B	C	K
12-1080*	8	600	B	5 1/4	3 1/8	3/8	3/8
12-1081*	8	600	C	5 1/4	3 1/8	3/8	3/8
12-1082*	8	600	D	6 1/4	3 1/8	3/8	3/8
12-1086	4/0	1000	B	6	3 7/8	1/2	1/2
12-1087	4/0	1000	C	6	3 7/8	1/2	1/2
12-1088	4/0	1000	D	7	3 7/8	1/2	1/2
12-1089	1000	1500	B	7 1/4	4 1/4	1/2	1/2
12-1090	1000	1500	C	7 1/4	4 1/4	1/2	1/2
12-1091	1000	1500	D	8 1/4	4 1/4	1/2	1/2
12-1092	1500	2000	B	7 3/8	4 3/8	1/2	1/2
12-1093	1500	2000	C	7 3/8	4 3/8	1/2	1/2
12-1094	1500	2000	D	8 3/8	4 3/8	1/2	1/2



**Bronze Tee Connectors  
Cable Run to Bar Tap**  
A rugged, dependable connector cast of copper alloy for high conductivity and natural resistance to corrosion and stress, the Type BTCB couples a cable run to a single bar tap. All bolts, nuts, and lockwashers made of high strength silicon bronze insure clamping efficiency. Bolt heads are captivated.