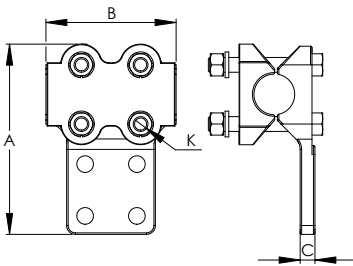
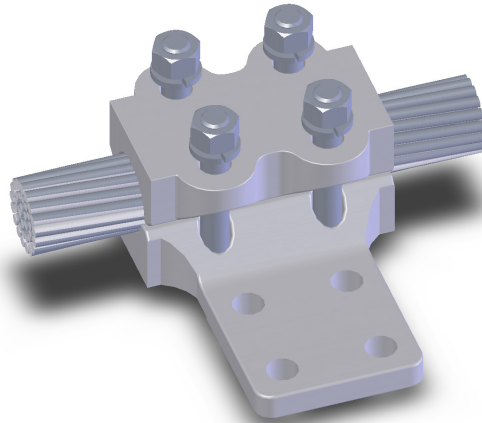
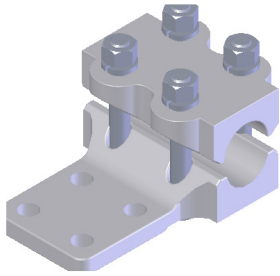


SECTION

12-8A

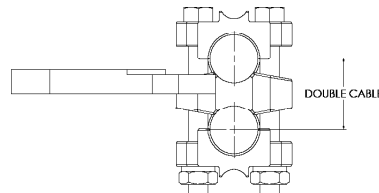
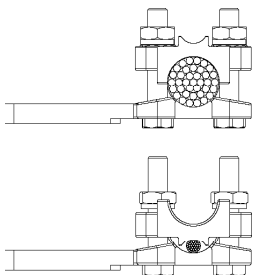
**ALUMINUM TEE CONNECTORS,
CABLE RUN TO FLAT PAD TAP**



CATALOG NUMBER	CABLE MAIN				PAD STYLE	DIMENSIONS IN INCHES			
	AAC		ACSR			A	B	C	K
	AWG MIN	MCM MAX	AWG MIN	MCM MAX					
12-1101*	4	954	4	795	B	5 7/8	4	5/8	1/2
12-1102*	4	954	4	795	C	6 1/4	4	3/4	1/2
12-1103*	4	954	4	795	D	7 1/4	4	5/8	1/2
12-1107*	900	1272	715.5	1113	B	6 3/4	3 5/8	5/8	1/2
12-1108*	900	1272	715.5	1113	C	6 3/4	3 5/8	5/8	1/2
12-1109*	900	1272	715.5	1113	D	7 1/4	3 5/8	5/8	1/2
12-1110	1272	1590	1113	1272	B	6 5/8	4 1/4	5/8	1/2
12-1111	1272	1590	1113	1272	C	6 5/8	4 1/4	5/8	1/2
12-1112	1272	1590	1113	1272	D	8	4 1/4	5/8	1/2
12-1113	1590	2000	1272	1590	B	6 3/4	4 1/2	5/8	5/8
12-1114	1590	2000	1272	1590	C	6 3/4	4 1/2	5/8	5/8
12-1115	1590	2000	1272	1590	D	8	4 1/2	5/8	5/8

The type ATCB is a rugged dependable connector for joining a cable run to a single bar tap.

Aluminum clamping hardware adds strength and durability to this tee connector which features captivated bolt heads.



For double run aluminum tee connectors use suffix (-2COND)
EX: 12-1111-2COND

Wide Range denoted by: *