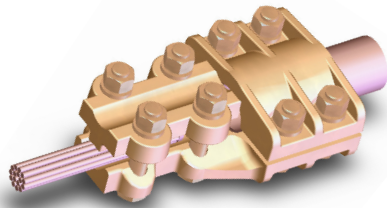


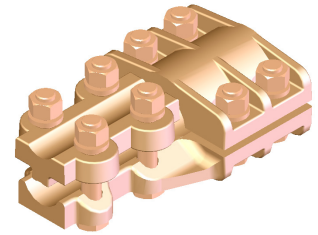
BRONZE COUPLER-REDUCERS, PIPE TO CABLE

SECTION

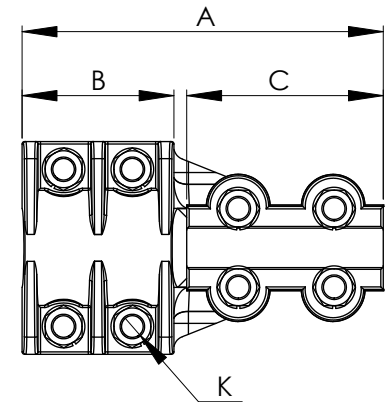
13-2



Wide Range denoted by: *



CATALOG NUMBER	IPS MAIN	CABLE TAP		DIMENSIONS IN INCHES			
		AWG MIN	MCM MAX	A	B	C	K
13-231*	1/2	8	600	6 1/8	3	3 1/8	3/8
13-232*	3/4	8	600	5 7/8	2 3/4	3 1/8	1/2 & 3/8
13-235*	1	8	600	6 5/16	3 3/16	3 1/8	1/2 & 3/8
13-236*	1	4/0	1000	6 15/16	3 3/16	3 3/4	1/2
13-238*	1 1/4	8	600	6 1/4	3 1/8	3 1/8	1/2 & 3/8
13-239*	1 1/4	4/0	1000	6 7/8	3 1/8	3 3/4	1/2
13-241*	1 1/2	8	600	6 3/16	3 1/16	3 1/8	1/2 & 3/8
13-242*	1 1/2	4/0	1000	6 13/16	3 1/16	3 3/4	1/2
13-243	1 1/2	1000	1500	7 5/16	3 1/16	4 1/4	1/2
13-244*	2	8	600	6 1/4	3 1/8	3 1/8	1/2 & 3/8
13-245*	2	4/0	1000	6 7/8	3 1/8	3 3/4	1/2
13-246	2	1000	1500	7 3/8	3 1/8	4 1/4	1/2
13-247	2	1500	2000	8 1/4	3 1/8	5 1/8	1/2
13-248*	2 1/2	8	600	7 1/8	4	3 1/8	5/8 & 3/8
13-249*	2 1/2	4/0	1000	7 3/4	4	3 3/4	5/8 & 1/2
13-250	2 1/2	1000	1500	8 1/4	4	4 1/4	5/8 & 1/2
13-251	2 1/2	1500	2000	9 1/8	4	5 1/8	5/8 & 1/2
13-252*	3	8	600	7 1/16	3 15/16	3 1/8	5/8 & 3/8
13-253*	3	4/0	1000	7 11/16	3 15/16	3 3/4	5/8 & 1/2
13-254	3	1000	1500	8 3/16	3 15/16	4 1/4	5/8 & 1/2
13-255	3	1500	2000	9 1/16	3 15/16	5 1/8	5/8 & 1/2
13-256*	3 1/2	8	600	6 7/8	3 3/4	3 1/8	5/8 & 3/8
13-257*	3 1/2	4/0	1000	7 1/2	3 3/4	3 3/4	5/8 & 1/2
13-258	3 1/2	1000	1500	8	3 3/4	4 1/4	5/8 & 1/2
13-259	3 1/2	1500	2000	8 7/8	3 3/4	5 1/8	5/8 & 1/2
13-260*	4	8	600	7 3/4	4 5/8	3 1/8	5/8 & 3/8
13-261*	4	4/0	1000	8 3/8	4 5/8	3 3/4	5/8 & 1/2
13-262	4	1000	1500	8 7/8	4 5/8	4 1/8	5/8 & 1/2
13-263	4	1500	2000	9 3/4	4 5/8	5 1/8	5/8 & 1/2
13-264*	4 1/2	8	600	7 7/8	4 3/4	3 1/8	5/8 & 3/8
13-265*	4 1/2	4/0	1000	8 1/2	4 3/4	3 3/4	5/8 & 1/2
13-266	4 1/2	1000	1500	9	4 3/4	4 1/4	5/8 & 1/2
13-267	4 1/2	1500	2000	9 7/8	4 3/4	5 1/8	5/8 & 1/2
13-268*	5	8	600	8 3/16	5 1/16	3 1/8	5/8 & 3/8
13-269*	5	4/0	1000	8 13/16	5 1/16	3 3/4	5/8 & 1/2
13-270	5	1000	1500	9 5/16	5 1/16	4 1/4	5/8 & 1/2
13-271	5	1500	2000	10 3/16	5 1/16	5 1/8	5/8 & 1/2
13-272	6	8	600	9 1/8	6	3 1/8	5/8 & 3/8
13-273*	6	4/0	1000	9 3/4	6	3 3/4	5/8 & 1/2
13-274	6	1000	1500	10 1/4	6	4 1/4	5/8 & 1/2
13-275	6	1500	2000	11 1/8	6	5 1/8	5/8 & 1/2



Made of a copper alloy for high conductivity and natural resistance to corrosion and stress, the heavy duty type BRPC connector intended to link a cable to a pipe bus offers rugged dependability in the field.

To enhance clamping efficiency and further reduce the effects of corrosion, bolts, nuts, and lockwashers are high strength silicon bronze.

Recessed bolt heads allow single-wrench installation.