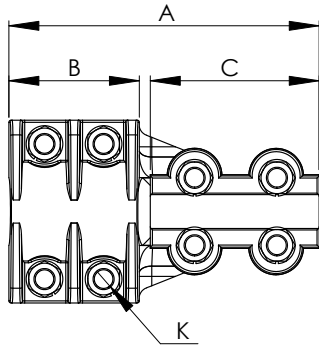
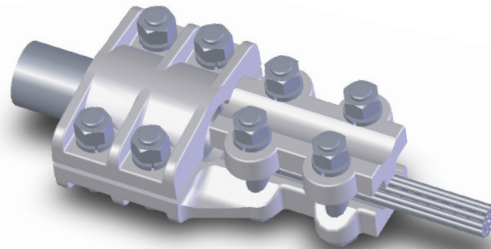
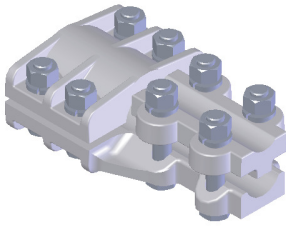


SECTION

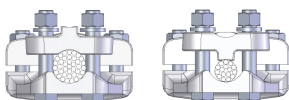
13-2A

ALUMINUM COUPLER-REDUCERS,
PIPE TO CABLE



The lightweight aluminum type ARPC which efficiently joins a cable to a pipe bus features high strength aluminum clamping hardware.

A heavy duty connector, reliable and durable under conditions of electrical and environmental stress, it offers the added convenience of recessed bolt heads to facilitate single-wrench installation.



Wide Range denoted by: *

CATALOG NUMBER	IPS MAIN	ALUMINUM CABLE TAP		ACSR CABLE TAP		DIMENSIONS IN INCHES			
		AWG MIN	MCM MAX	AWG MIN	MCM MAX	A	B	C	K
13-276	1/2	4	954	4	795	8	4	4	1/2
13-280*	3/4	4	954	4	795	6 3/4	2 3/4	4	1/2
13-284*	1	4	954	4	795	7 3/16	3 3/16	4	1/2
13-288*	1 1/4	4	954	4	795	7 1/8	3 1/8	4	1/2
13-292*	1 1/2	4	954	4	795	7 1/16	3 1/16	4	1/2
13-293	1 1/2	900	1272	715.5	1113	6 11/16	3 1/16	3 5/8	1/2
13-296*	2	4	954	4	795	7 1/8	3 1/8	4	1/2
13-297	2	900	1272	715.5	1113	6 3/4	3 1/8	3 5/8	1/2
13-300*	2 1/2	4	954	4	795	8	4	4	5/8 & 1/2
13-301	2 1/2	900	1272	715.5	1113	7 5/8	4	3 5/8	5/8 & 1/2
13-302	2 1/2	1272	1590	1113	1272	8 1/4	4	4 1/4	5/8 & 1/2
13-305*	3	4	954	4	795	7 15/16	3 15/16	4	5/8 & 1/2
13-306	3	900	1272	715.5	1113	7 9/16	3 15/16	3 5/8	5/8 & 1/2
13-307	3	1272	1590	1113	1272	8 3/16	3 15/16	4 1/4	5/8 & 1/2
13-310*	3 1/2	4	954	4	795	7 3/4	3 3/4	4	5/8 & 1/2
13-311	3 1/2	900	1272	715.5	1113	7 3/8	3 3/4	3 5/8	5/8 & 1/2
13-312	3 1/2	1272	1590	1113	1272	8	3 3/4	4 1/4	5/8 & 1/2
13-314*	4	4	954	4	795	8	4 5/8	4	5/8 & 1/2
13-315	4	900	1272	715.5	1113	8 1/4	4 5/8	3 5/8	5/8 & 1/2
13-316	4	1272	1590	1113	1272	8 1/4	4 5/8	4 1/4	5/8 & 1/2
13-317	4	1590	2000	1272	1590	8 1/2	4 5/8	4 1/2	5/8
13-319*	4 1/2	4	954	4	795	8 3/4	4 3/4	4	5/8 & 1/2
13-320	4 1/2	900	1272	715.5	1113	8 3/8	4 3/4	3 5/8	5/8 & 1/2
13-321	4 1/2	1272	1590	1113	1272	9	4 3/4	4 1/4	5/8 & 1/2
13-322	4 1/2	1590	2000	1272	1590	9 1/4	4 3/4	4 1/2	5/8
13-324*	5	4	954	4	795	9 1/16	5 1/16	4	5/8 & 1/2
13-325	5	900	1272	715.5	1113	8 11/16	5 1/16	3 5/8	5/8 & 1/2
13-326	5	1272	1590	1113	1272	9 5/16	5 1/16	4 1/4	5/8 & 1/2
13-327	5	1590	2000	1272	1590	9 9/16	5 1/16	4 1/2	5/8
13-329	6	4	954	4	795	10	6	4	5/8 & 1/2
13-330	6	900	1272	715.5	1113	9 5/8	6	3 5/8	5/8 & 1/2
13-331	6	1272	1590	1113	1272	10 1/4	6	4 1/4	5/8 & 1/2
13-332	6	1590	2000	1272	1590	10 1/2	6	4 1/2	5/8