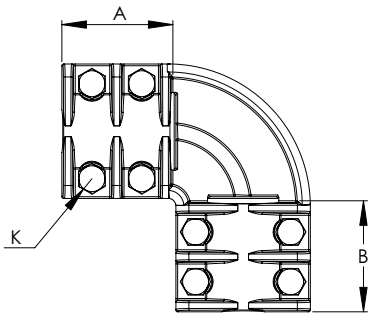
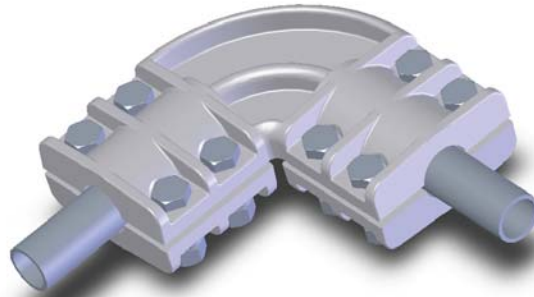


## SECTION

## 13-3A

ALUMINUM COUPLER PIPE  
RUN TO PIPE TAP, ELBOW

Made of a lightweight aluminum alloy, the Type AEPP offers strength and durability in situations requiring the connection of pipes of the same size at an angle. The high tensile aluminum clamping hardware effectively resists corrosion and enhances the strength of the connector. In addition, all bolt heads are captivated to permit single-wrench installation.

Orders for varying angles can be filled by adding a suffix to the catalog number. If, for instance, 45° angle were required for catalog number 13-417, the number should be written on the order as 13-417-45.

ALUMINUM  
COUPLER PIPE RUN TO PIPE TAP, ELBOW

| CATALOG NUMBER | IPS MAIN | IPSTAP | DIMENSIONS IN INCHES |       |     |
|----------------|----------|--------|----------------------|-------|-----|
|                |          |        | A                    | B     | K   |
| 13-398         | 1/2      | 1/2    | 2 1/2                | 2 1/2 | 3/8 |
| 13-400         | 3/4      | 3/4    | 2 7/8                | 2 7/8 | 3/8 |
| 13-403         | 1        | 1      | 3 1/8                | 2 1/8 | 3/8 |
| 13-407         | 1 1/4    | 1 1/4  | 3 1/8                | 3 1/8 | 1/2 |
| 13-412         | 1 1/2    | 1 1/2  | 3 1/4                | 3 1/4 | 1/2 |
| 13-417         | 2        | 2      | 3 1/4                | 3 1/4 | 1/2 |
| 13-423         | 2 1/2    | 2 1/2  | 3 7/8                | 3 7/8 | 1/2 |
| 13-429         | 3        | 3      | 4                    | 4     | 5/8 |
| 13-435         | 3 1/2    | 3 1/2  | 3 3/4                | 3 3/4 | 5/8 |
| 13-441         | 4        | 4      | 4 5/8                | 4 5/8 | 5/8 |
| 13-448         | 4 1/2    | 4 1/2  | 4 7/8                | 4 7/8 | 5/8 |
| 13-455         | 5        | 5      | 5                    | 5     | 5/8 |
| 13-462         | 6        | 6      | 6                    | 6     | 5/8 |