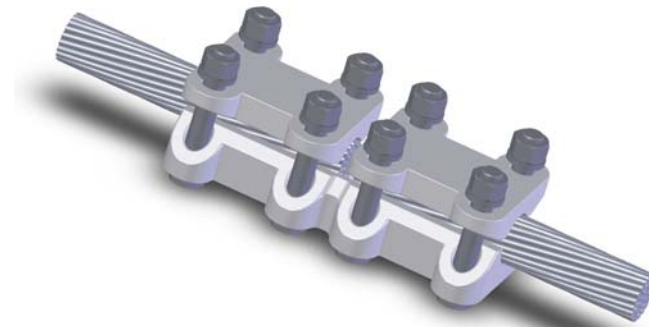


## SECTION

## 13-4A

ALUMINUM COUPLER CABLE RUN  
TO CABLE TAP

Cast of a lightweight aluminum alloy, the Type ACC couplers include clamping hardware made of high tensile aluminum. All bolt heads are captivated to facilitate single-wrench installation.

ALUMINUM COUPLER CABLE RUN TO CABLE TAP					
CATALOG NUMBER	CABLE RANGE		DIMENSIONS IN INCHES		
	AAC	ACSR	A	B	C
13-520	#4-954	#4-795	4	4	3
13-525	900-1250	715.5-1113	3 5/8	3 5/8	3 1/2
13-530	1272-1590	1113-1250	4 3/8	4 3/8	3 3/8
13-535	1590-2000	1272-1590	4 1/2	4 1/2	3 3/4

