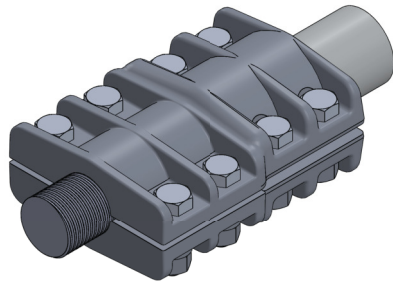


# ALUMINUM STUD CONNECTORS, STUD TO PIPE

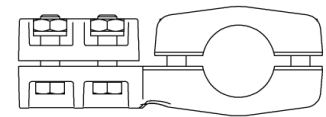
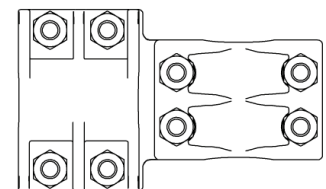
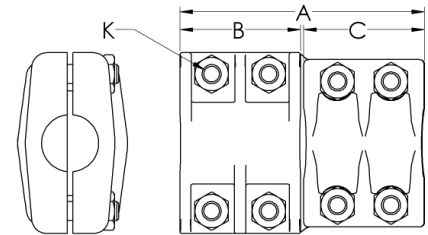
SECTION

14-1A



CATALOG NUMBER	STUD SIZE	PIPE SIZE IPS	DIMENSIONS IN INCHES			
			A	B	C	K
14-166	1/2-13	1/2	7 1/8	3 1/8	4	1/2
14-167	1/2-13	3/4	5 7/8	3 1/8	2 3/4	1/2
14-168	1/2-13	1	6 5/16	3 1/8	3 3/16	1/2
14-169	3/4-16	1/2	7 1/8	3 1/8	4	1/2
14-170	3/4-16	3/4	5 7/8	3 1/8	2 3/4	1/2
14-171	3/4-16	1	6 5/16	3 1/8	3 3/16	1/2
14-172	1-14	1/2	7 1/8	3 1/8	4	1/2
14-173	1-14	3/4	5 7/8	3 1/8	2 3/4	1/2
14-174	1-14	1	6 5/16	3 1/8	3 3/16	1/2
14-175	1-14	1 1/4	6 1/4	3 1/8	3 1/8	1/2
14-176	1 1/8-12	1/2	7 1/8	3 1/8	4	1/2
14-177	1 1/8-12	3/4	5 7/8	3 1/8	2 3/4	1/2
14-178	1 1/8-12	1	6 5/16	3 1/8	3 3/16	1/2
14-179	1 1/8-12	1 1/4	6 1/4	3 1/8	3 1/8	1/2
14-180	1 1/4-12	1/2	7 1/8	3 1/8	4	1/2
14-181	1 1/4-12	3/4	5 7/8	3 1/8	2 3/4	1/2
14-182	1 1/4-12	1	6 5/16	3 1/8	3 3/16	1/2
14-183	1 1/4-12	1 1/4	6 1/4	3 1/8	3 1/8	1/2
14-184	1 1/4-12	1 1/2	6 3/16	3 1/8	3 1/16	1/2
14-185	1 1/2-12	1/2	7 1/8	3 1/8	4	1/2
14-186	1 1/2-12	3/4	5 7/8	3 1/8	2 3/4	1/2
14-187	1 1/2-12	1	6 5/16	3 1/8	3 3/16	1/2
14-188	1 1/2-12	1 1/4	6 1/4	3 1/8	3 1/8	1/2
14-189	1 1/2-12	1 1/2	6 3/16	3 1/8	3 1/16	1/2
14-190	1 1/2-12	2	6 1/4	3 1/8	3 1/8	1/2
14-191	1 3/4-12	3/4	6 1/4	3 1/2	2 3/4	1/2
14-192	1 3/4-12	1	6 11/16	3 1/2	3 3/16	1/2
14-193	1 3/4-12	1 1/4	6 5/8	3 1/2	3 1/8	1/2
14-194	1 3/4-12	1 1/2	6 9/16	3 1/2	3 1/16	1/2
14-195	1 3/4-12	2	6 5/8	3 1/2	3 1/8	1/2

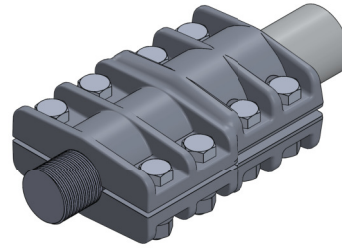
Continued on next page



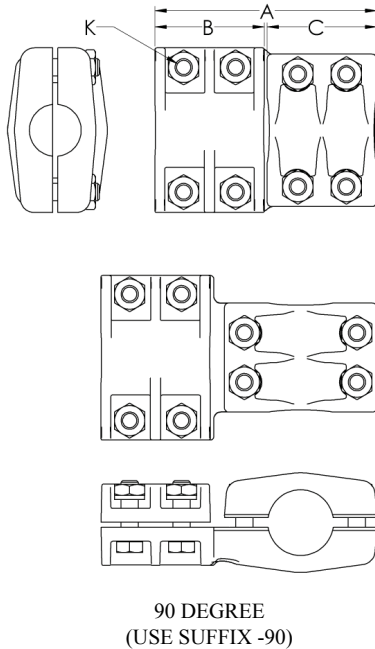
90 DEGREE  
(USE SUFFIX -90)

Cast of a lightweight aluminum alloy, the type AT connects a threaded stud to a pipe bus. Bolts, nuts, and lockwashers are high tensile aluminum for durability and clamping efficiency.

Requests for unthreaded studs or stud sizes not listed must be specified on the order. Tubes at 90° to the stud will also be readily provided so long as the suffix "-90" appears at the end of the catalog number.

ALUMINUM STUD CONNECTORS  
STUD TO PIPE, continued

Continued from previous page



Requests for unthreaded studs or stud sizes not listed must be specified on the order.

Pipes at 90° to the stud will also be readily provided so long as the suffix "-90" appears at the end of the catalog number.

CATALOG NUMBER	STUD SIZE	PIPE SIZE IPS	DIMENSIONS IN INCHES			
			A	B	C	K
14-196	2-12	1	6 11/16	3 1/2	3 3/16	1/2
14-197	2-12	1 1/4	6 5/8	3 1/2	3 1/8	1/2
14-198	2-12	1 1/2	6 9/16	3 1/2	3 1/16	1/2
14-199	2-12	2	6 5/8	3 1/2	3 1/8	1/2
14-200	2-12	2 1/2	7 1/2	3 1/2	4	5/8 & 1/2
14-201	2 1/4-12	1 1/4	6 5/8	3 1/2	3 1/8	1/2
14-202	2 1/4-12	1 1/2	6 9/16	3 1/2	3 1/16	1/2
14-203	2 1/4-12	2	6 5/8	3 1/2	3 1/8	1/2
14-204	2 1/4-12	2 1/2	7 3/8	3 1/2	3 7/8	5/8 & 1/2
14-205	2 1/2-12	1 1/2	6 9/16	3 1/2	3 1/16	1/2
14-206	2 1/2-12	2	6 5/8	3 1/2	3 1/8	1/2
14-207	2 1/2-12	2 1/2	7 1/2	3 1/2	4	5/8 & 1/2
14-208	2 1/2-12	3	7 7/16	3 1/2	3 15/16	5/8 & 1/2
14-209	2 3/4-12	1 1/2	7 1/16	4	3 1/16	5/8 & 1/2
14-210	2 3/4-12	2	7 1/8	4	3 1/8	5/8 & 1/2
14-211	2 3/4-12	2 1/2	8	4	4	5/8
14-212	2 3/4-12	3	7 15/16	4	3 15/16	5/8
14-213	2 3/4-12	3 1/2	7 3/4	4	3 3/4	5/8
14-214	3-12	2	7 1/8	4	3 1/8	5/8 & 1/2
14-215	3-12	2 1/2	8	4	4	5/8
14-216	3-12	3	7 15/16	4	3 15/16	5/8
14-217	3-12	3 1/2	7 3/4	4	3 3/4	5/8
14-218	3-12	4	8 5/8	4	4 5/8	5/8
14-219	3 1/4-12	2 1/2	8	4	4	5/8
14-220	3 1/4-12	3	7 15/16	4	3 15/16	5/8
14-221	3 1/4-12	3 1/2	7 3/4	4	3 3/4	5/8
14-222	3 1/4-12	4	8 5/8	4	4 5/8	5/8
14-223	3 1/2-12	2 1/2	8 1/4	4 1/4	4	5/8
14-224	3 1/2-12	3	8 3/16	4 1/4	3 15/16	5/8
14-225	3 1/2-12	3 1/2	8	4 1/4	3 3/4	5/8
14-226	3 1/2-12	4	8 3/4	4 1/4	4 5/8	5/8
14-227	4-12	2 1/2	8 1/4	4 1/4	4	5/8
14-228	4-12	3	8 3/16	4 1/4	3 15/16	5/8
14-229	4-12	3 1/2	8	4 1/4	3 3/4	5/8
14-230	4-12	4	8 3/4	4 1/4	4 5/8	5/8