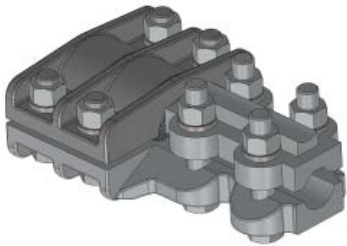


SECTION

14-2A

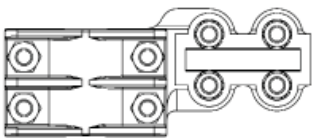
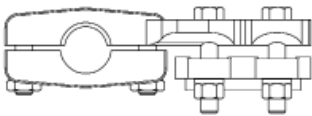
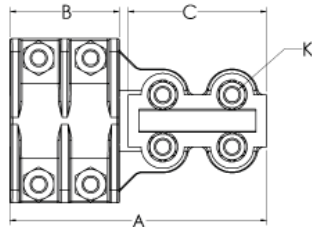
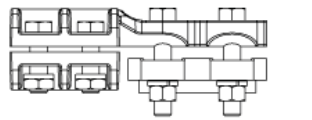
**ALUMINUM STUD CONNECTORS,
STUD TO CABLE**



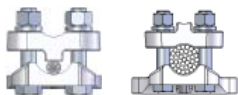
An efficient connector for joining a threaded stud to a cable, the type ASC relies on a lightweight aluminum alloy for its durability. High tensile aluminum bolts, nuts, and lockwashers increase clamping strength and resist corrosion.

Orders for cables at 90° to the stud require the addition of the suffix "-90" to the catalog number.

Unthreaded studs or stud sizes not listed must be specified with the order.



90 DEGREE
(USE SUFFIX -90)



Wide Range denoted by: *

CATALOG NUMBER	STUD SIZE	ALUMINUM		ACSR		DIMENSIONS IN INCHES			
		AWG MIN.	MCM MAX	AWG MIN.	MCM MAX.	A	B	C	K
14-276	1/2-13	4	954	4	795	7 1/8	3 1/8	4	1/2
14-277	3/4-16	4	954	4	795	7 1/8	3 1/8	4	1/2
14-281*	1-14	4	954	4	795	7 1/8	3 1/8	4	1/2
14-285*	1 1/8-12	4	954	4	795	7 1/8	3 1/8	4	1/2
14-289*	1 1/4-12	4	954	4	795	7 1/8	3 1/8	4	1/2
14-292*	1 1/2-12	4	954	4	795	7 1/8	3 1/8	4	1/2
14-293	1 1/2-12	900	1272	715.5	1113	6 3/4	3 1/8	3 5/8	1/2
14-296*	1 3/4-12	4	954	4	795	7 1/2	3 1/2	4	1/2
14-297	1 3/4-12	900	1272	715.5	1113	7 1/8	3 1/2	3 5/8	1/2
14-299*	2-12	4	954	4	795	7 1/2	3 1/2	4	1/2
14-300	2-12	900	1272	715.5	1113	7 1/8	3 1/2	3 5/8	1/2
14-301	2-12	1272	1590	1113	1272	7 3/4	3 1/2	4 1/4	1/2
14-302*	2 1/4-12	4	954	4	795	7 1/2	3 1/2	4	1/2
14-303	2 1/4-12	900	1272	715.5	1113	7 1/8	3 1/2	3 5/8	1/2
14-304	2 1/4-12	1272	1590	1113	1272	7 3/4	3 1/2	4 1/4	1/2
14-305*	2 1/2-12	4	954	4	795	7 1/2	3 1/2	4	1/2
14-306	2 1/2-12	900	1272	715.5	1113	7 1/8	3 1/2	3 5/8	1/2
14-307	2 1/2-12	1272	1590	1113	1272	7 3/4	3 1/2	4 1/4	1/2
14-308	2 1/2-12	1590	2000	1272	1590	8	3 1/2	4 1/2	5/8 & 1/2
14-309*	2 3/4-12	4	954	4	795	8	4	4	5/8 & 1/2
14-310	2 3/4-12	900	1272	715.5	1113	7 5/8	4	3 5/8	5/8 & 1/2
14-311	2 3/4-12	1272	1590	1113	1272	8 1/4	4	4 1/4	5/8 & 1/2
14-312	2 3/4-12	1590	2000	1272	1590	8 1/2	4	4 1/2	5/8
14-313*	3-12	4	954	4	795	8	4	4	5/8 & 1/2
14-314	3-12	900	1272	715.5	1113	7 5/8	4	3 5/8	5/8 & 1/2
14-315	3-12	1272	1590	1113	1272	8 1/4	4	4 1/4	5/8 & 1/2
14-316	3-12	1590	2000	1272	1590	8 1/2	4	4 1/2	5/8
14-317	3 1/4-12	900	1272	715.5	1113	7 5/8	4	3 5/8	5/8 & 1/2
14-318	3 1/4-12	1272	1590	1113	1272	8 1/4	4	4 1/4	5/8 & 1/2
14-319	3 1/4-12	1590	2000	1272	1590	8 1/2	4	4 1/2	5/8
14-320	3 1/2-12	900	1272	715.5	1113	7 7/8	4 1/4	3 5/8	5/8 & 1/2
14-321	3 1/2-12	1272	1590	1113	1272	8 1/2	4 1/4	4 1/4	5/8 & 1/2
14-322	3 1/2-12	1590	2000	1272	1590	8 3/4	4 1/4	4 1/2	5/8
14-323	4-12	900	1272	715.5	1113	7 7/8	4 1/4	3 5/8	5/8 & 1/2
14-324	4-12	1272	1590	1113	1272	8 1/2	4 1/4	4 1/4	5/8 & 1/2
14-325	4-12	1590	2000	1272	1590	8 3/4	4 1/4	4 1/2	5/8